

# *Grizzly* *Industrial, Inc.*®

## MODEL G0594 LARGE CHIPPER/SHREDDER OWNER'S MANUAL



COPYRIGHT © NOVEMBER, 2005 BY GRIZZLY INDUSTRIAL, INC. REVISED AUGUST, 2011 (BL)  
**WARNING: NO PORTION OF THIS MANUAL MAY BE REPRODUCED IN ANY SHAPE  
OR FORM WITHOUT THE WRITTEN APPROVAL OF GRIZZLY INDUSTRIAL, INC.**  
(FOR MODELS MANUFACTURED SINCE 7/11) #EW7656 PRINTED IN CHINA



## **WARNING!**

**This manual provides critical safety instructions on the proper setup, operation, maintenance, and service of this machine/tool. Save this document, refer to it often, and use it to instruct other operators.**

**Failure to read, understand and follow the instructions in this manual may result in fire or serious personal injury—including amputation, electrocution, or death.**

**The owner of this machine/tool is solely responsible for its safe use. This responsibility includes but is not limited to proper installation in a safe environment, personnel training and usage authorization, proper inspection and maintenance, manual availability and comprehension, application of safety devices, cutting/sanding/grinding tool integrity, and the usage of personal protective equipment.**

**The manufacturer will not be held liable for injury or property damage from negligence, improper training, machine modifications or misuse.**



## **WARNING!**

**Some dust created by power sanding, sawing, grinding, drilling, and other construction activities contains chemicals known to the State of California to cause cancer, birth defects or other reproductive harm. Some examples of these chemicals are:**

- **Lead from lead-based paints.**
- **Crystalline silica from bricks, cement and other masonry products.**
- **Arsenic and chromium from chemically-treated lumber.**

**Your risk from these exposures varies, depending on how often you do this type of work. To reduce your exposure to these chemicals: Work in a well ventilated area, and work with approved safety equipment, such as those dust masks that are specially designed to filter out microscopic particles.**

# Table of Contents

- Manual Accuracy..... 2
- Machine Data Sheet..... 2
- Contact Info..... 2
- Identification ..... 3
- SECTION 1: SAFETY ..... 4**
  - Safety Instructions for Machinery..... 4
  - Additional Safety Instructions for Chipper/Shredders ..... 6
- SECTION 2: SETUP ..... 7**
  - Unpacking ..... 7
  - Site Considerations ..... 7
  - Items Needed for Setup ..... 7
  - Inventory..... 8
  - Assembly..... 8
- SECTION 3: OPERATIONS ..... 10**
  - Operation Safety ..... 10
  - Chipping/Shredding..... 10
- SECTION 4: MAINTENANCE..... 12**
  - Visual Inspection ..... 12
  - Cleaning ..... 12
  - Storage..... 12
- SECTION 5: SERVICE ..... 13**
  - Troubleshooting..... 13
  - Replacing Blades ..... 14
  - Replacing V-Belt..... 14
  - Parts Breakdown..... 15
  - Parts List ..... 16
- WARRANTY AND RETURNS ..... 17**
  - BRIGGS & STRATTON ENGINE WARRANTY ..... 17**

# Manual Accuracy

We are proud to offer this document with your new machine! We've made every effort to be exact with the instructions, specifications, drawings, and photographs of the machine we used when writing this manual. However, sometimes we still make an occasional mistake.

Also, owing to our policy of continuous improvement, **your machine may not exactly match the manual.** If you find this to be the case, and the difference between the manual and machine leaves you in doubt, immediately call our technical support for updates or clarification.

For your convenience, we post all available documentation on our website at **www.grizzly.com**. Any updates to this document will be reflected on our website as soon as complete.

# Contact Info

We stand behind our machines. If you have any questions or need help, use the information below to contact us. Before contacting, please get the serial number and manufacture date of your machine. This will help us help you faster.

Grizzly Technical Support  
1203 Lycoming Mall Circle  
Muncy, PA 17756  
Phone: (570) 546-9663  
Email: techsupport@grizzly.com

We want your feedback on this manual. What did you like about it? Where could it be improved? Please take a few minutes to give us feedback.

Grizzly Documentation Manager  
P.O. Box 2069  
Bellingham, WA 98227-2069  
Email: manuals@grizzly.com



## MACHINE DATA SHEET

Customer Service #: (570) 546-9663 • To Order Call: (800) 523-4777 • Fax #: (800) 438-5901

### MODEL G0594 LARGE CHIPPER/SHREDDER

**Overall Dimensions:**

Overall Dimensions .....26½"W x 36½"D x 52½"H  
Shipping Weight ..... 177 lbs.

**Capacities:**

Maximum Diameter of Material Fed into the Chipping Funnel .....3"  
Maximum Diameter of Material Fed into the Hopper.....¾"

**Motor:**

Type .....Briggs & Stratton, Gas Powered  
Horsepower ..... 6.0 HP

**General Construction:**

Body .....Steel  
Hopper.....Steel

*Specifications, while deemed accurate, are not guaranteed.*



# Identification

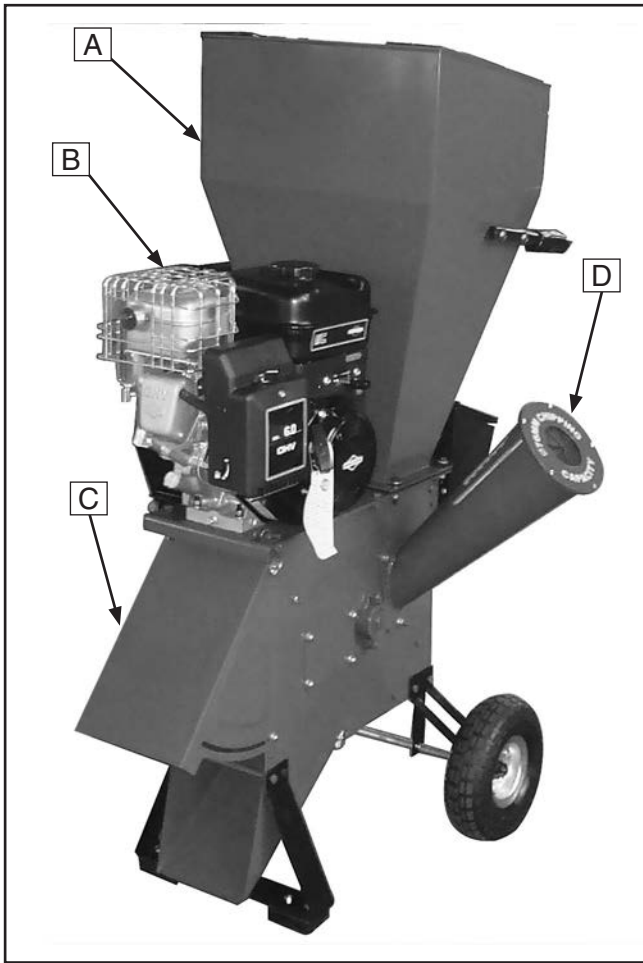


Figure 1. Chipper/shredder identification.

## Machine Identification (Figures 1 & 2)

- A. Hopper
- B. Motor
- C. Chip Outlet
- D. Chipper Funnel
- E. Choke
- F. Gas Cap
- G. Throttle
- H. ON/OFF Switch
- I. Pull Start Handle
- J. Gas Shut Off Valve
- K. Exhaust

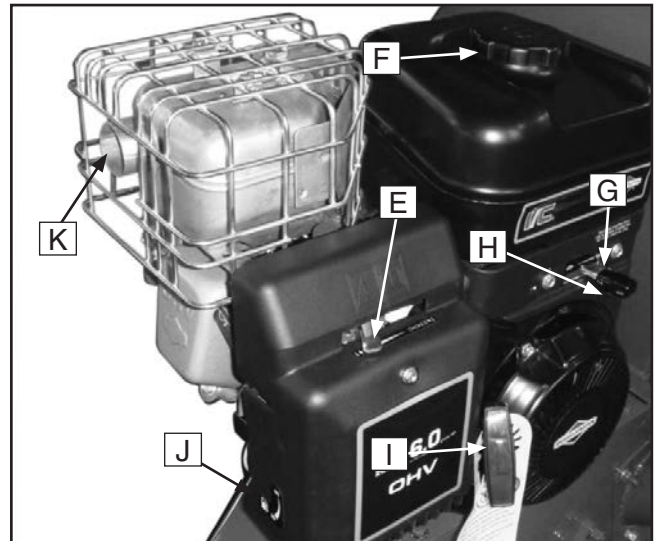


Figure 2. Motor identification.




# SECTION 1: SAFETY

## For Your Own Safety, Read Instruction Manual Before Operating This Machine

The purpose of safety symbols is to attract your attention to possible hazardous conditions. This manual uses a series of symbols and signal words intended to convey the level of importance of the safety messages. The progression of symbols is described below. Remember that safety messages by themselves do not eliminate danger and are not a substitute for proper accident prevention measures. Always use common sense and good judgment.

 **DANGER** Indicates an imminently hazardous situation which, if not avoided, **WILL** result in death or serious injury.

 **WARNING** Indicates a potentially hazardous situation which, if not avoided, **COULD** result in death or serious injury.

 **CAUTION** Indicates a potentially hazardous situation which, if not avoided, **MAY** result in minor or moderate injury. It may also be used to alert against unsafe practices.

**NOTICE** This symbol is used to alert the user to useful information about proper operation of the machine.

## Safety Instructions for Machinery

### **WARNING**

**OWNER'S MANUAL.** Read and understand this owner's manual **BEFORE** using machine.

**TRAINED OPERATORS ONLY.** Untrained operators have a higher risk of being hurt or killed. Only allow trained/supervised people to use this machine. When machine is not being used, disconnect power, remove switch keys, or lock-out machine to prevent unauthorized use—especially around children. Make workshop kid proof!

**DANGEROUS ENVIRONMENTS.** Do not use machinery in areas that are wet, cluttered, or have poor lighting. Operating machinery in these areas greatly increases the risk of accidents and injury.

**MENTAL ALERTNESS REQUIRED.** Full mental alertness is required for safe operation of machinery. Never operate under the influence of drugs or alcohol, when tired, or when distracted.

**ELECTRICAL EQUIPMENT INJURY RISKS.** You can be shocked, burned, or killed by touching live electrical components or improperly grounded machinery. To reduce this risk, only allow qualified service personnel to do electrical installation or repair work, and always disconnect power before accessing or exposing electrical equipment.

**DISCONNECT POWER FIRST.** Always disconnect machine from power supply **BEFORE** making adjustments, changing tooling, or servicing machine. This prevents an injury risk from unintended startup or contact with live electrical components.

**EYE PROTECTION.** Always wear ANSI-approved safety glasses or a face shield when operating or observing machinery to reduce the risk of eye injury or blindness from flying particles. Everyday eyeglasses are not approved safety glasses.



# WARNING

**WEARING PROPER APPAREL.** Do not wear clothing, apparel or jewelry that can become entangled in moving parts. Always tie back or cover long hair. Wear non-slip footwear to avoid accidental slips, which could cause loss of workpiece control.

**HAZARDOUS DUST.** Dust created while using machinery may cause cancer, birth defects, or long-term respiratory damage. Be aware of dust hazards associated with each workpiece material, and always wear a NIOSH-approved respirator to reduce your risk.

**HEARING PROTECTION.** Always wear hearing protection when operating or observing loud machinery. Extended exposure to this noise without hearing protection can cause permanent hearing loss.

**REMOVE ADJUSTING TOOLS.** Tools left on machinery can become dangerous projectiles upon startup. Never leave chuck keys, wrenches, or any other tools on machine. Always verify removal before starting!

**INTENDED USAGE.** Only use machine for its intended purpose and never make modifications not approved by Grizzly. Modifying machine or using it differently than intended may result in malfunction or mechanical failure that can lead to serious personal injury or death!

**AWKWARD POSITIONS.** Keep proper footing and balance at all times when operating machine. Do not overreach! Avoid awkward hand positions that make workpiece control difficult or increase the risk of accidental injury.

**CHILDREN & BYSTANDERS.** Keep children and bystanders at a safe distance from the work area. Stop using machine if they become a distraction.

**GUARDS & COVERS.** Guards and covers reduce accidental contact with moving parts or flying debris. Make sure they are properly installed, undamaged, and working correctly.

**FORCING MACHINERY.** Do not force machine. It will do the job safer and better at the rate for which it was designed.

**NEVER STAND ON MACHINE.** Serious injury may occur if machine is tipped or if the cutting tool is unintentionally contacted.

**STABLE MACHINE.** Unexpected movement during operation greatly increases risk of injury or loss of control. Before starting, verify machine is stable and mobile base (if used) is locked.

**USE RECOMMENDED ACCESSORIES.** Consult this owner's manual or the manufacturer for recommended accessories. Using improper accessories will increase the risk of serious injury.

**UNATTENDED OPERATION.** To reduce the risk of accidental injury, turn machine **OFF** and ensure all moving parts completely stop before walking away. Never leave machine running while unattended.

**MAINTAIN WITH CARE.** Follow all maintenance instructions and lubrication schedules to keep machine in good working condition. A machine that is improperly maintained could malfunction, leading to serious personal injury or death.

**CHECK DAMAGED PARTS.** Regularly inspect machine for any condition that may affect safe operation. Immediately repair or replace damaged or mis-adjusted parts before operating machine.

**MAINTAIN POWER CORDS.** When disconnecting cord-connected machines from power, grab and pull the plug—NOT the cord. Pulling the cord may damage the wires inside. Do not handle cord/plug with wet hands. Avoid cord damage by keeping it away from heated surfaces, high traffic areas, harsh chemicals, and wet/damp locations.

**EXPERIENCING DIFFICULTIES.** If at any time you experience difficulties performing the intended operation, stop using the machine! Contact our Technical Support at (570) 546-9663.



# Additional Safety Instructions for Chipper/ Shredders

## **WARNING**

**READ MANUAL.** Read this entire manual and the Briggs & Stratton® motor manual. These manuals contain proper operating and safety instructions for this chipper/shredder.

**SAFETY EQUIPMENT.** Wear safety glasses, hearing protection, and gloves when operating a chipper/shredder. Make sure any bystanders are also wearing safety equipment.

**ENGINE OPERATION.** Refer to the Briggs & Stratton motor manual for operating instructions and gasoline motor safety warnings.

**HAND SAFETY.** DO NOT put hands or other body parts into hopper, funnel, or outlet while the blades are turning. The chipper/shredder can drag you into the blade, causing amputation of fingers, hands or other body parts. DO NOT touch the exhaust during or immediately after operation to prevent burns.

**CLOTHING.** DO NOT wear loose clothing, neckties, scarves, or jewelry which may get caught in moving parts. DO NOT wear clothing or gloves with pull ties or straps. This type of clothing could get tangled with material that is being shredded, pulling you into the chipper/shredder.

**SECURE FOOTING.** Placing the chipper/shredder on a slope or slippery surface may cause the operator to fall into the machine, causing burns from the motor, or an amputation if an arm accidentally goes into the hopper. Wear non-slip, closed toed shoes or boots to maintain secure footing.

**JAMS AND CLOGGING.** Turn the chipper/shredder **OFF**, allow all moving parts to come to a complete stop, and disconnect the spark plug wire before attempting to free a jam or clog.

**OPERATING LOCATION.** Set up the chipper/shredder on firm, level, grass or dirt. DO NOT set up the chipper/shredder on gravel, asphalt, concrete, or stone. The chips are expelled from the machine with enough force to ricochet off of hard surfaces and cause serious injury. DO NOT set up the chipper/shredder in a location where sparks or heat from the motor could cause a fire.

**FEEDING MATERIAL.** Hold branches and brush loosely, and allow the chipper/shredder to draw the material in. The machine sometimes will draw material in very quickly and your hand may be drawn in if you are holding tightly. If the blades hit a hard object, or if the machine begins to make an unusual noise or vibration, immediately shut the chipper/shredder OFF.

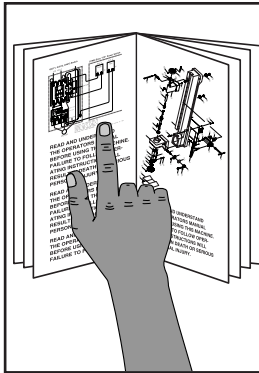
**TURN OFF CHIPPER/SHREDDER.** Turn **OFF** the machine, allow all moving parts to come to a complete stop, and disconnect the spark plug wire before moving the machine, emptying the bag, unclogging the inlets or outlets, filling the gas tank, or performing maintenance and repairs.

**STARTING THE CHIPPER/SHREDDER.** Make sure the hopper and funnel are empty when starting the machine. The pull start cord may stop suddenly causing the chipper/shredder to fall over or injure your hand or arm.

**CLEANING CHIPPER/SHREDDER.** Allow the motor to cool off, then brush dust and chip build-up off of the motor to prevent fire or motor overheating.

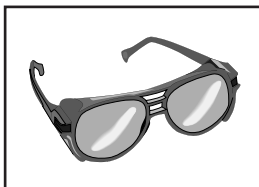


# SECTION 2: SETUP



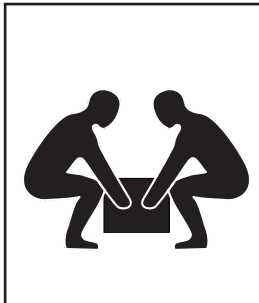
## **!WARNING**

This machine presents serious injury hazards to untrained users. Read through this entire manual to become familiar with the controls and operations before starting the machine!



## **!WARNING**

Wear safety glasses during the entire setup process!



## **!WARNING**

This machine and its components are very heavy. Get lifting help or use power lifting equipment such as a forklift to move heavy items.

## Unpacking

Your machine was carefully packaged for safe transportation. Remove the packaging materials from around your machine and inspect it. If you discover any damage, *please call us immediately at (570) 546-9663 for advice.*

Save the containers and all packing materials for possible inspection by the carrier or its agent. *Otherwise, filing a freight claim can be difficult.*

When you are completely satisfied with the condition of your shipment, inventory the contents.

## Site Considerations

### Location

The chipper/shredder must be placed on a firm, flat, grass or dirt surface to prevent the machine from tipping. DO NOT place the machine on concrete, asphalt, or other hard surfaces. The chips could bounce up from the hard surface and cause injury.

### Working Clearances

Consider the length of the material to be processed through the machine and make sure that there is enough height above the chipper/shredder to accommodate the material.

Make sure the unit is located close to the area where the chips are going to be used to reduce carrying.

Stay clear of the discharge area. Make sure all bystanders, children, pets, or objects that you do not want damaged or covered in chips, are clear of the discharge area.

## Items Needed for Setup

The following items are needed to complete the setup process, but are not included with your machine:

Description	Qty
• Phillips Screwdriver .....	1
• Oil (see motor manual for viscosity).....	$\frac{5}{8}$ qt



# Inventory

The following is a list of items shipped with your machine. Before beginning setup, lay these items out and inventory them.

If any non-proprietary parts are missing (e.g. a nut or a washer), we will gladly replace them; or for the sake of expediency, replacements can be obtained at your local hardware store.

Inventory (Figure 3)	Qty
A. Chipper/Shredder .....	1
B. Wheel Assembly.....	2
C. Hopper.....	1
D. Funnel.....	1
E. Hopper Gasket .....	1
F. Handles .....	2
G. Leg .....	1
H. Toolbox (Contents Not Shown).....	1
—Ear Protection .....	1 Pair
—Safety Goggles .....	1 Pair
—Gloves.....	1 Pair
—Oil Funnel .....	1
—Straight Blade Screwdriver .....	1
—Wrench 13/15mm.....	1
—Wrench 12/14mm.....	1
—Spark plug Socket w/Handle 5/8".....	1

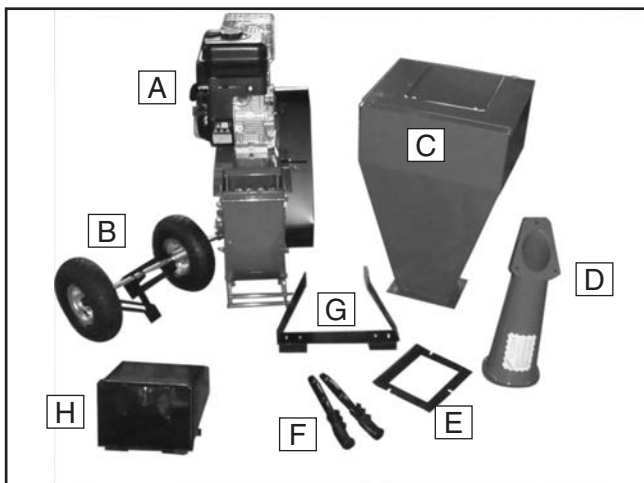


Figure 3. Model G0594 inventory.

Hardware (Not Shown)	Qty
• Hex Bolts M8-1.25 x 35.....	4
• Rubber Grommets.....	4
• Phillips Head Screws M8-1.25 x 35 .....	4
• Fender Washers 8mm.....	4
• Lock Nuts M8-1.25 .....	11
• Flat Washers 8mm .....	27
• Lock Washers 8mm .....	11

# Assembly

The major components of this chipper/shredder have been assembled at the factory. Some minor assembly is required. The assembly process will use all the parts and hardware listed in the inventory.

DO NOT attempt to start this machine until all assembly has been completed. Serious personal injury and damage to the machine could occur.

## To assemble the chipper/shredder:

1. Tip the chipper/shredder over and remove the four bolts shown in **Figure 4**. DO NOT turn the chipper/shredder over once it is full of oil and gas. The oil and gas will spill out.

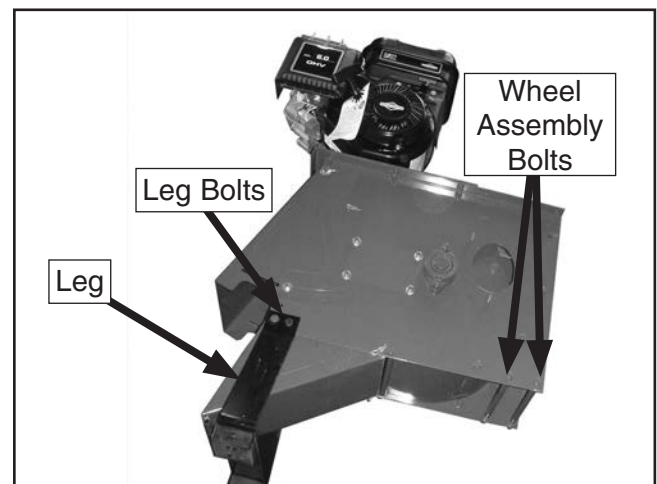
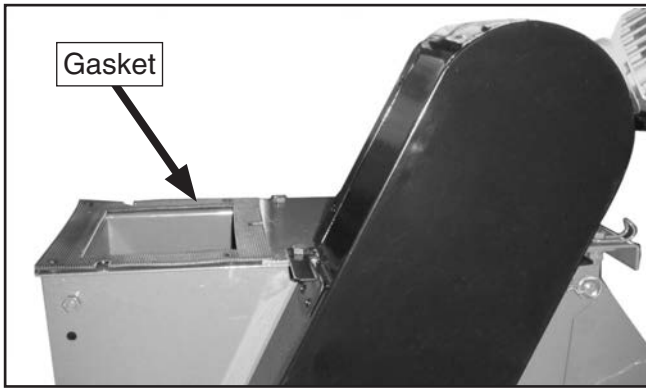


Figure 4. Leg attached.

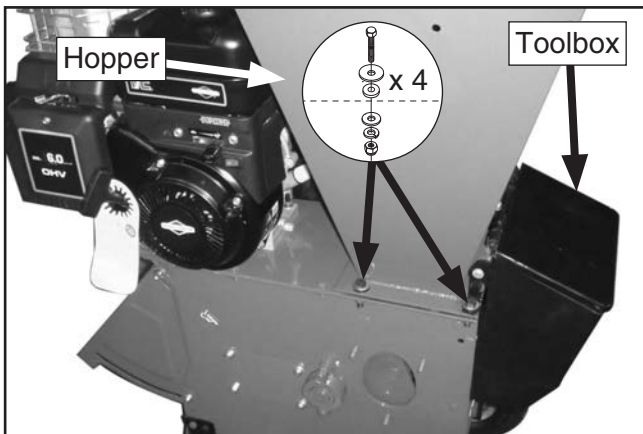
2. Attach the wheel assembly and the leg with the bolts that were removed in **Step 1**.
3. Set the chipper shredder upright and set the hopper gasket around the chute as shown in **Figure 5**.





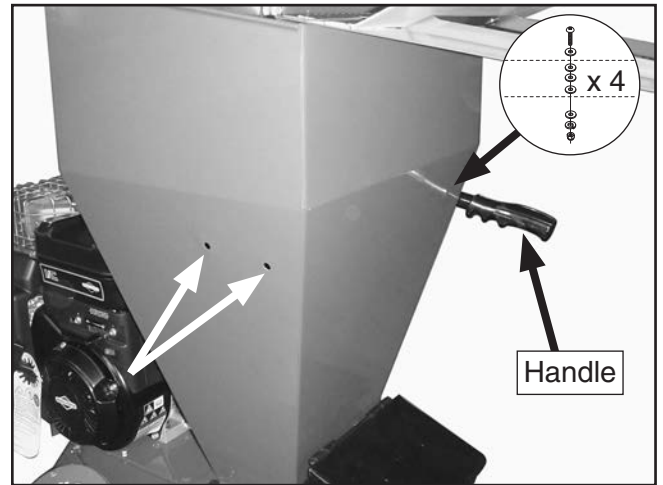
**Figure 5.** Hopper gasket positioned.

- Place the hopper on top of the gasket and line up all of the holes. Place two rubber grommets and 8mm fender washers on two M8-1.25 x 35 hex bolts, thread them through the holes nearest the motor, then secure them with two 8mm flat washers, 8mm lock washers, and M8-1.25 lock nuts (see **Figure 6**).



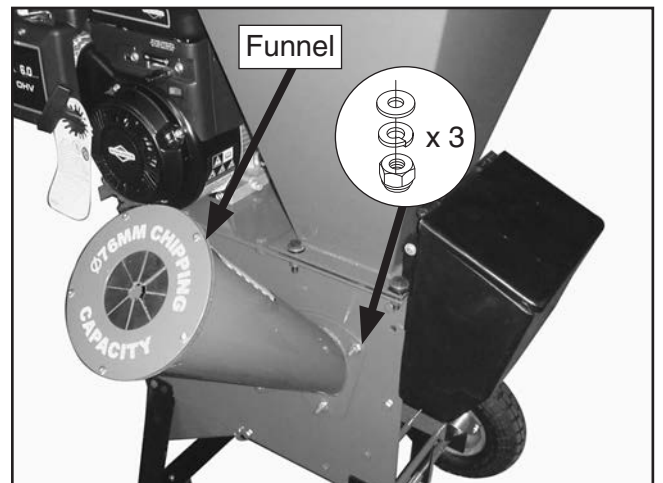
**Figure 6.** Hopper and toolbox attached.

- Line up the holes in the toolbox with the remaining holes in the hopper and secure them with the same combination of hex bolts, washers, and lock nuts as used in **Step 4** (see **Figure 6**).
- Insert an M8-1.25 x 35 Phillips head screw with an 8mm flat washer through each hole in the handles. Place three 8mm flat washers on each of the screws and insert the handle assembly into the holes in the hopper (see **Figure 7**). Secure the handles with one 8mm flat washer, 8mm lock washer, and M8-1.25 lock nut on each screw.



**Figure 7.** Location to install the handles.

- Place the funnel over the studs in the side of the chipper/shredder and secure it with the remaining 8mm flat washers, 8mm lock washers, and M8-1.25 lock nuts (see **Figure 8**).



**Figure 8.** Funnel installed.

- Before operating, fill the motor with oil and gas according to the instructions in the Briggs & Stratton manual.

## NOTICE

**This chipper/shredder does not have oil in the motor when shipped. Add oil before operating the chipper/shredder, or the motor will seize.**

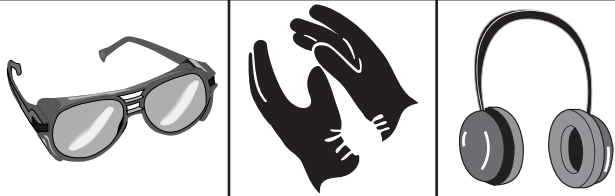


# SECTION 3: OPERATIONS

## Operation Safety

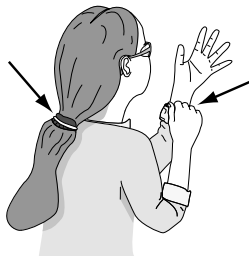
### **!WARNING**

Damage to your eyes, hands, and ears could result from using this machine without proper protective gear. Always wear safety glasses, hearing protection, and leather gloves when operating this machine.



### **!WARNING**

Loose hair and clothing could get caught in machinery and cause serious personal injury. Keep loose clothing and long hair away from moving machinery.



### **NOTICE**

If you have never used this type of machine or equipment before, **WE STRONGLY RECOMMEND** that you read books, trade magazines, or get formal training before beginning any projects. Regardless of the content in this section, Grizzly Industrial will not be held liable for accidents caused by lack of training.

### **NOTICE**

This chipper/shredder does not have oil in the motor when shipped. Add oil before operating the chipper/shredder, or the motor will seize.

## Chipping/Shredding

Understand and follow all of the safety precautions listed in **SECTION 1: SAFETY** before operation.

This chipper/shredder is intended for mulching garden and pruning waste such as green branches, twigs, brush, vines, and long grasses. **DO NOT** use this chipper/shredder for chipping construction debris, plastic, paper products, rope or twine, or any material that may contain metal.

**Note:** Remove any nails, rope, twine, or rocks that may be imbedded in roots, before inserting material into the chipper/shredder.

### To operate the chipper/shredder:

1. Place the chipper/shredder on a flat, firm, dirt or grass surface and point the outlet in a safe direction.
2. Check the oil and gas levels before starting the motor.
3. Loosen the wing nuts on the discharge chute deflector so that it swings freely, then place the bag over the chute and tie it securely in place.
4. Make sure the hopper and funnel are empty before starting the engine. If there is material in the hopper or funnel, the pull start cord may stop suddenly causing the chipper/shredder to fall over, or causing injury to your hand or arm.
5. Put on eye and ear protection, and gloves, start the chipper/shredder as instructed in the Briggs & Stratton motor manual, then set the throttle to fast.
6. Stand to the side of the hopper and make sure you have a stable stance and firm footing.



### To shred twigs, leaves, and brush:

1. Slowly pour the material into the hopper. DO NOT try to stuff too much material in at one time or the machine will jam.
2. Use a 1" diameter branch to push the material into the hopper if necessary (see **Figure 9**). DO NOT use your hands!



**Figure 9.** Shredding leaves.

**Note:** Move the throttle to the idle position, or turn the chipper/shredder **OFF**, when not actively shredding or chipping.

3. Turn **OFF** the machine (see the Briggs & Stratton motor manual for instructions), allow all moving parts to completely stop, and disconnect the spark plug wire before moving the machine, emptying the bag, unclogging the inlets or outlets, filling the gas tank, or performing maintenance and repairs.

### Shredding Tips:

- Feed material into the chipper/shredder slowly. If the motor begins to bog down, you are feeding too fast.
- Roots and dirty material will dull or damage the blades.
- Remove the chips often. Allowing the chips to pile up to the outlet will cause the outlet to clog.
- Avoid shredding wet leaves or brush to reduce clogging. If you must shred wet material, alternate wet and dry material.

### To chip branches:

1. Stand to the side of the hopper and make sure you have a stable stance and firm footing.
2. Remove twigs and smaller branches from the branch if they might catch on the edges of the funnel and prevent the branch from going in.
3. Place branches up to 3" diameter into the funnel, thick end first, and allow the blades to draw the branch into the funnel (see **Figure 10**).



**Figure 10.** Chipping branches.

4. When finished chipping, turn **OFF** the machine, allow all moving parts to come to a complete stop, and disconnect the spark plug wire before moving the machine, emptying the bag, unclogging the inlets or outlets, filling the gas tank, or performing maintenance and repairs.

### Chipping Tips:

- DO NOT feed material in excess of 3" diameter into the funnel. Large branches will cause the motor to stall.
- Chipping wood when it is green is easier on the machine. The blades will stay sharper longer.
- The chipper/shredder will work best if the blades are sharp. Rotate, sharpen, or replace the blades as soon as chipper/shredder performance begins to deteriorate.



# SECTION 4: MAINTENANCE

---

---

## WARNING

Turn **OFF** the machine, allow all moving parts to come to a complete stop, and disconnect the spark plug wire before moving the machine, emptying the bag, unclogging the inlets or outlets, filling the gas tank, or performing maintenance and repairs.

## Visual Inspection

---

---

Before and after using the chipper/shredder, closely inspect the machine for loose parts and damage.

- Check the hopper, hopper guard, and funnel for cracks, holes, and loose bolts.
- Check the box frame for cracks or damage.
- Check the entire machine for loose bolts or screws.
- Check the blades and hammers for cracks and dings.
- Check the engine oil level. See the Briggs & Stratton motor manual for specifications.

## Cleaning

---

---

Clean the Model G0594 after each use. Allow the motor to cool and remove the spark plug wire. Brush off or vacuum wood chips and wipe off the remaining dust from the exterior of the machine with a dry cloth. **DO NOT** rinse off the chipper/shredder with water. Remove any chips or debris from the hopper and the discharge chute.

It is much harder to clean the machine if you allow it to sit for a while after use. You may need to use an engine cleaner to remove the built up resins from the motor. Engine cleaners are available at most auto parts stores.

## Storage

---

---

Follow these guidelines when storing your chipper/shredder.

- Remove the spark plug wire to prevent unauthorized starting.
- Empty the bag before storing to keep the mulch from rotting in the bag.
- Place the chipper/shredder in a dry, level area. If the chipper/shredder is tipped it may leak oil and gas.
- **DO NOT** store the chipper/shredder near an ignition source, such as a wood stove, gas or electric heater, or an appliance or heater with a pilot light.
- Store the chipper/shredder in a well ventilated area. **DO NOT** store the chipper/shredder in an area that will allow toxic gas fumes into areas inhabited by humans or animals.
- Close the discharge chute deflector and place the covers over the hopper and the funnel to prevent objects or critters from getting into the machine.
- When storing for more than 30 days, follow the instructions in the Briggs & Stratton motor manual for long term storage.



# SECTION 5: SERVICE

Review the troubleshooting and procedures in this section to fix your machine if a problem develops. If you need replacement parts or you are unsure of your repair skills, then feel free to call our Technical Support at (570) 546-9663 for machine repairs, or contact Briggs & Stratton for motor repairs.

## WARNING

Turn **OFF** the machine, allow all moving parts to come to a complete stop, and disconnect the spark plug wire before moving the machine, emptying the bag, unclogging the inlets or outlets, filling the gas tank, or performing maintenance and repairs.

## Troubleshooting

Symptom	Possible Cause	Possible Solution
Engine will not start.	<ol style="list-style-type: none"> <li>Control levers are not in correct positions for starting.</li> <li>Spark plug wire is not connected to the spark plug, or the spark plug is bad.</li> <li>No gas, or gas is old and stale.</li> <li>Air filter is dirty.</li> <li>Engine oil is low.</li> <li>Blocked fuel line.</li> </ol>	<ol style="list-style-type: none"> <li>Make sure the ON/OFF switch is ON, the fuel shut-off valve is open, and the choke and throttle controls are in the start position.</li> <li>Connect the spark plug wire or replace the spark plug.</li> <li>If empty, fill the tank. If full, drain the gas, then fill the tank with fresh gas.</li> <li>Clean out the air filter.</li> <li>Add oil to the engine.</li> <li>Clean out the fuel line.</li> </ol>
Engine does not run smoothly.	<ol style="list-style-type: none"> <li>Engine is warm, and the choke is still in the CHOKE position.</li> <li>Air filter is dirty.</li> <li>Stale fuel, water or dirt in fuel, blocked fuel line.</li> </ol>	<ol style="list-style-type: none"> <li>Move the choke to the RUN position.</li> <li>Clean the air filter.</li> <li>Drain the fuel tank, clean out the fuel line, and fill the tank with fresh gas.</li> </ol>
Engine overheats.	<ol style="list-style-type: none"> <li>Chips and sawdust around the motor.</li> <li>Dirty air filter.</li> </ol>	<ol style="list-style-type: none"> <li>Clean off the motor.</li> <li>Clean out the air filter.</li> </ol>
Machine vibrates or makes unusual noises.	<ol style="list-style-type: none"> <li>Loose or damaged parts.</li> <li>Impeller or blades have woody residue or chunks stuck to them.</li> </ol>	<ol style="list-style-type: none"> <li>Check the blades, hammers, impeller, and all connections. Tighten, repair, or replace any loose or damaged parts.</li> <li>Clean the impeller and blades.</li> </ol>
Chipper/shredder no longer chips or shreds well.	<ol style="list-style-type: none"> <li>Dull or damaged blades and hammers.</li> <li>Loose, worn, or damaged V-belt.</li> </ol>	<ol style="list-style-type: none"> <li>Sharpen or replace blades and check the hammers for damage.</li> <li>Replace or tighten V-belt.</li> </ol>
Chips do not come out of the discharge chute or come out slowly.	<ol style="list-style-type: none"> <li>Discharge chute or hopper is clogged.</li> <li>Insufficient motor RPM's.</li> </ol>	<ol style="list-style-type: none"> <li>Turn <b>OFF</b> the motor, disconnect the spark plug, then clean out the machine.</li> <li>Move the throttle to FAST.</li> </ol>



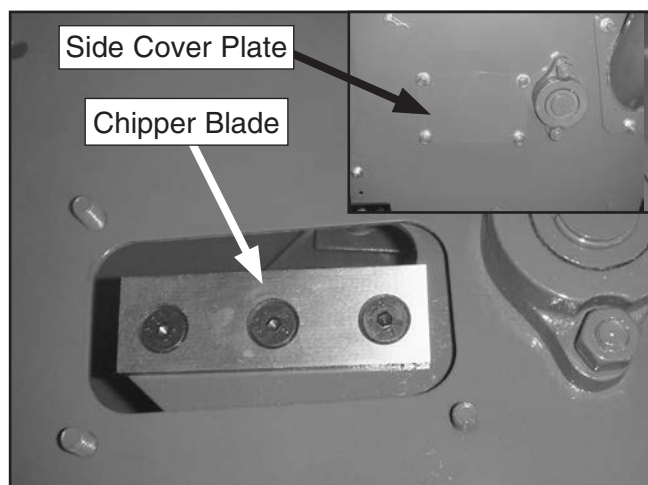
# Replacing Blades

Sharpen or replace the blades as soon as the chipping performance begins to deteriorate, or if you notice dings, chips, or cracks.

Tools Needed	Qty
Wrench/Socket 13mm .....	1
Hex Wrench 5mm.....	1

## To perform this procedure:

1. TURN **OFF** THE MACHINE, ALLOW ALL MOVING PARTS TO COME TO A COMPLETE STOP, AND DISCONNECT THE SPARK PLUG WIRE!
2. Remove the side cover plate (photo inset in **Figure 11**) to expose the blades.



**Figure 11.** Chipper blade.

3. Remove one blade, rotate the impeller, and remove the second blade.
4. Have the original blades professionally sharpened, or order a replacement set, then re-install the blades.
5. Replace the side cover plate and re-attach the spark plug wire.

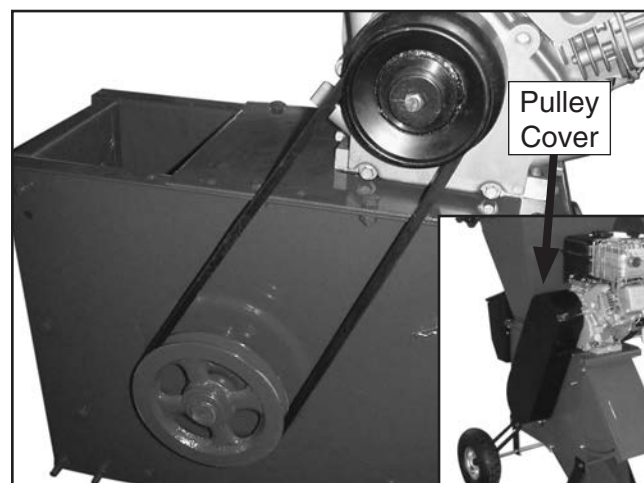
# Replacing V-Belt

Replace or tighten the V-belt if you notice the motor running and the chipper blades are not spinning.

Tools Needed	Qty
Adjustable Wrench .....	1

## To perform this procedure:

1. TURN **OFF** THE MACHINE, ALLOW ALL MOVING PARTS TO COME TO A COMPLETE STOP, AND DISCONNECT THE SPARK PLUG WIRE!
2. Remove the pulley cover (photo inset in **Figure 12**).

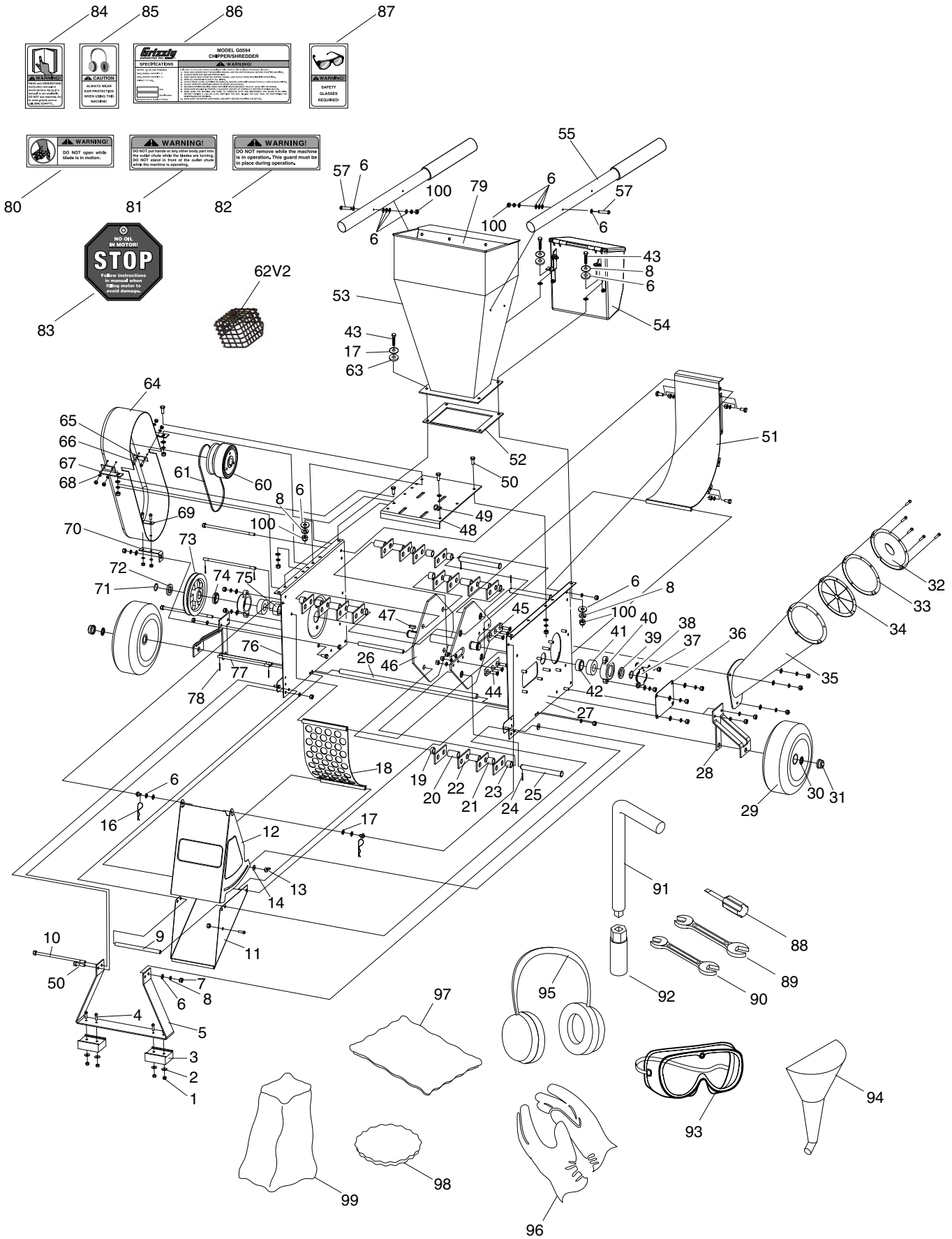


**Figure 12.** Replacing V-belt.

3. Loosen the four motor mounting bolts, then slide the motor back to loosen the V-belt tension.
4. Roll the belt off of the pulleys (see **Figure 12**), then install the new belt.
5. Slide the motor forward to tension the V-belt so there is approximately 1/2" deflection when the belt is pushed in the center.
6. Secure the motor mounting bolts, replace the V-belt cover, and re-attach the spark plug wire.



# Parts Breakdown



# Parts List

REF	PART #	DESCRIPTION
1	PLN03M	LOCK NUT M6-1
2	PW03M	FLAT WASHER 6MM
3	P0594003	RUBBER FOOT
4	PS26M	PHLP HD SCR M6-1 X 20
5	P0594005	LEG
6	PW01M	FLAT WASHER 8MM
7	PN03M	HEX NUT M8-1.25
8	PLW04M	LOCK WASHER 8MM
9	P0594009	TUBE
10	P0594010	HEX BOLT M8-1.25 X 200
11	P0594011	DISCHARGE CHUTE
12	P0594012	MOVABLE DOOR
13	PWN01M	WING NUT M6-1
14	PWF06M	FENDER WASHER 6MM
16	P0594016	HITCH PIN 2MM
17	PWF08M	FENDER WASHER 8MM
18	P0594018	SCREEN
19	P0594019	SPACER 1
20	P0594020	SPACER 2
21	P0594021	SPACER 3
22	P0594022	HAMMER
23	P0594023	SPACER 4
24	PRP39M	ROLL PIN 4 X 20
25	P0594025	HAMMER AXLE
26	P0594026	WHEEL AXLE
27	P0594027	BOX FRAME SIDE LEFT
28	P0594028	WHEEL SUPPORT
29	P0594029	WHEEL
30	P0594030	SPACER
31	P0594031	COVER
32	P0594032	RING1
33	P0594033	RING2
34	P0594034	RUBBER GRID
35	P0594035	CHIPPER CHUTE
36	P0594036	BLADE COVER PLATE
37	P0594037	BEARING COVER
38	P0594038	WIRE CIRCLIP 25MM
39	P0594039	BEARING WASHER(RIGHT) 25MM
40	P0594040	BEARING SEAT
41	P0594041	BALL BEARING 4205
42	P0594042	SPACER (RIGHT)
43	PB20M	HEX BOLT M8-1.25 X 35
44	PFH21M	FLAT HD SCR M8-1.25 X 25
45	P0594045	BLADE
46	P0594046	IMPELLER
47	P0594047	BELT KEY
48	P0594048	ENGINE PLATE
49	P0594049	HOOK

REF	PART #	DESCRIPTION
50	PB09M	HEX BOLT M8-1.25 X 20
51	P0594051	REAR BOARD
52	P0594052	HOPPER GASKET
53	P0594053	HOPPER
54	P0594054	TOOL BOX
55	P0594055	HANDLES
57	PS42M	PHLP HD SCR M8-1.25 x 35
60	P0594060	CLUTCH
61	PVA41	V-BELT A41
62V2	P0594062V2	MUFFLER GUARD V2.07.11
63	P0594063	RUBBER GROMMET
64	P0594064	PULLEY COVER
65	P0594065	SUPPORT PLATE
66	PS11M	PHLP HD SCR M6-1 X 16
67	P0594067	BELT COVER BRACKET
68	PW03M	FLAT WASHER 6MM
69	P0594069	SUPPORT PLATE
70	P0594070	BELT COVER SUPPORT
71	P0594071	WIRE CIRCLIP 25MM
72	P0594072	SPACER
73	P0594073	PULLEY
74	P0594074	BEARING WASHER (LEFT) 25MM
75	P0594075	SPACER
76	P0594076	BOX FRAME SIDE RIGHT
77	P0594010	HEX BOLT M8-1.25 X 200
78	P0594078	COTTER PIN 3.2 X 20
79	P0594079	HOPPER GUARD
80	P0594080	BLADE COVER WARNING
81	P0594081	DISCHARGE CHUTE WARNING
82	P0594082	PULLEY WARNING
83	P0594083	OIL WARNING
84	PLABEL-12	READ MANUAL LABEL 2" X 3-5/16"
85	PLABEL-15	EAR PROTECTION LABEL 2" X 3-5/16"H
86	P0594086	G0594 ID LABEL
87	PLABEL-11	SAFETY GLASSES LABEL 2" X 3-5/16"
88	PSDS2	#2 STANDARD SCREWDRIVER
89	PWR1315	WRENCH 13 X 15
90	PWR1214	WRENCH 12 X 14
91	P0594091	SOCKET HANDLE
92	P0594092	SPARK PLUG SOCKET 5/8"
93	P0594093	GOGGLES
94	P0594094	FUNNEL
95	P0594095	EAR PROTECTION
96	P0594096	GLOVES
97	P0594097	HOPPER COVER
98	P0594098	FUNNEL COVER
99	P0594099	DISCHARGE BAG
100	PLN04M	LOCK NUT M8-1.25

## WARNING

Safety labels warn about machine hazards and ways to prevent injury. The owner of this machine **MUST** maintain the original location and readability of the labels on the machine. If any label is removed or becomes unreadable, **REPLACE** that label before using the machine again. Contact Grizzly at (800) 523-4777 or [www.grizzly.com](http://www.grizzly.com) to order new labels.



# WARRANTY AND RETURNS

---

Grizzly Industrial, Inc. warrants every product it sells for a period of **1 year** to the original purchaser from the date of purchase. This warranty does not apply to defects due directly or indirectly to misuse, abuse, negligence, accidents, repairs or alterations or lack of maintenance. This is Grizzly's sole written warranty and any and all warranties that may be implied by law, including any merchantability or fitness, for any particular purpose, are hereby limited to the duration of this written warranty. We do not warrant or represent that the merchandise complies with the provisions of any law or acts unless the manufacturer so warrants. In no event shall Grizzly's liability under this warranty exceed the purchase price paid for the product and any legal actions brought against Grizzly shall be tried in the State of Washington, County of Whatcom.

We shall in no event be liable for death, injuries to persons or property or for incidental, contingent, special, or consequential damages arising from the use of our products.

To take advantage of this warranty, contact us by mail or phone and give us all the details. We will then issue you a "Return Number," which must be clearly posted on the outside as well as the inside of the carton. We will not accept any item back without this number. Proof of purchase must accompany the merchandise.

The manufacturers reserve the right to change specifications at any time because they constantly strive to achieve better quality equipment. We make every effort to ensure that our products meet high quality and durability standards and we hope you never need to use this warranty.

Please feel free to write or call us if you have any questions about the machine or the manual.

Thank you again for your business and continued support. We hope to serve you again soon.

## BRIGGS & STRATTON ENGINE WARRANTY

---

Grizzly Industrial, Inc. does not warrant the engine that is included on this product. The engine on this product is covered by the Briggs & Stratton Engine Owner Warranty. Please refer to the Briggs & Stratton engine manual that is included with this product for the details of the Briggs & Stratton Engine Owner Warranty.







# WARRANTY CARD

Name \_\_\_\_\_  
 Street \_\_\_\_\_  
 City \_\_\_\_\_ State \_\_\_\_\_ Zip \_\_\_\_\_  
 Phone # \_\_\_\_\_ Email \_\_\_\_\_  
 Model # \_\_\_\_\_ Order # \_\_\_\_\_ Serial # \_\_\_\_\_

The following information is given on a voluntary basis. It will be used for marketing purposes to help us develop better products and services. **Of course, all information is strictly confidential.**

1. How did you learn about us?

Advertisement                       Friend                       Catalog  
 Card Deck                               Website                       Other:

2. Which of the following magazines do you subscribe to?

<input type="checkbox"/> Cabinetmaker & FDM	<input type="checkbox"/> Popular Science	<input type="checkbox"/> Wooden Boat
<input type="checkbox"/> Family Handyman	<input type="checkbox"/> Popular Woodworking	<input type="checkbox"/> Woodshop News
<input type="checkbox"/> Hand Loader	<input type="checkbox"/> Precision Shooter	<input type="checkbox"/> Woodsmith
<input type="checkbox"/> Handy	<input type="checkbox"/> Projects in Metal	<input type="checkbox"/> Woodwork
<input type="checkbox"/> Home Shop Machinist	<input type="checkbox"/> RC Modeler	<input type="checkbox"/> Woodworker West
<input type="checkbox"/> Journal of Light Cont.	<input type="checkbox"/> Rifle	<input type="checkbox"/> Woodworker's Journal
<input type="checkbox"/> Live Steam	<input type="checkbox"/> Shop Notes	<input type="checkbox"/> Other:
<input type="checkbox"/> Model Airplane News	<input type="checkbox"/> Shotgun News	
<input type="checkbox"/> Old House Journal	<input type="checkbox"/> Today's Homeowner	
<input type="checkbox"/> Popular Mechanics	<input type="checkbox"/> Wood	

3. What is your annual household income?

\$20,000-\$29,000                       \$30,000-\$39,000                       \$40,000-\$49,000  
 \$50,000-\$59,000                       \$60,000-\$69,000                       \$70,000+

4. What is your age group?

20-29                                       30-39                                       40-49  
 50-59                                       60-69                                       70+

5. How long have you been a woodworker/metalworker?

0-2 Years                       2-8 Years                       8-20 Years                       20+ Years

6. How many of your machines or tools are Grizzly?

0-2                       3-5                       6-9                       10+

7. Do you think your machine represents a good value?       Yes                       No

8. Would you recommend Grizzly Industrial to a friend?       Yes                       No

9. Would you allow us to use your name as a reference for Grizzly customers in your area?  
**Note: We never use names more than 3 times.**       Yes                       No

10. Comments: \_\_\_\_\_  
 \_\_\_\_\_  
 \_\_\_\_\_

CUT ALONG DOTTED LINE

FOLD ALONG DOTTED LINE

\_\_\_\_\_
\_\_\_\_\_
\_\_\_\_\_



Place Stamp Here



GRIZZLY INDUSTRIAL, INC.
P.O. BOX 2069
BELLINGHAM, WA 98227-2069



FOLD ALONG DOTTED LINE

Send a Grizzly Catalog to a friend:

Name \_\_\_\_\_
Street \_\_\_\_\_
City \_\_\_\_\_ State \_\_\_\_\_ Zip \_\_\_\_\_

TAPE ALONG EDGES--PLEASE DO NOT STAPLE



# *grizzly.com*<sup>®</sup>

**TOOL WEBSITE**

Buy Direct and Save with Grizzly<sup>®</sup> – Trusted, Proven and a Great Value!  
~Since 1983~

*Visit Our Website Today For  
Current Specials!*

**ORDER  
24 HOURS A DAY!  
1-800-523-4777**

