



# MODEL G2904

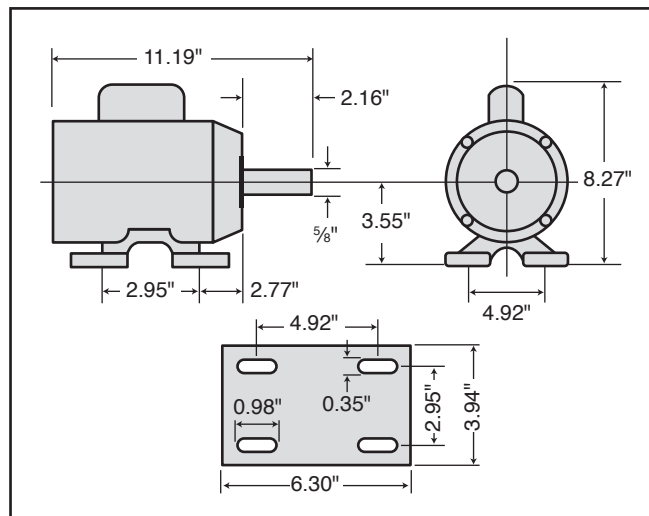
## 3/4 HP ELECTRIC MOTOR

### INSTRUCTIONS

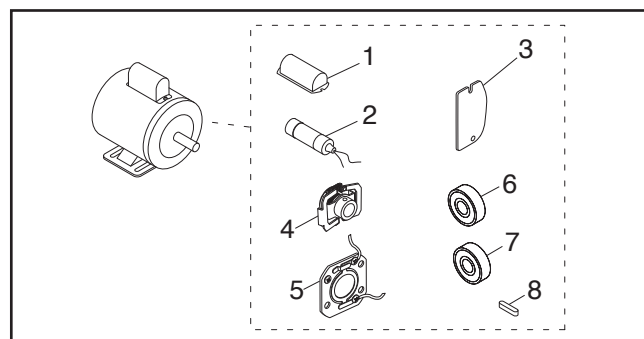
For questions or help with this product contact Tech Support at (570) 546-9663 or techsupport@grizzly.com

#### Model G2904 Specifications

Power ..... 3/4 HP  
 Cycle.....60 Hz  
 Voltage.....110V/220V  
 Rewired ..... 110V  
 Amps .....9.6A/4.8A  
 Speed ..... 3450 RPM  
 Phase ..... Single-Phase  
 Class..... E



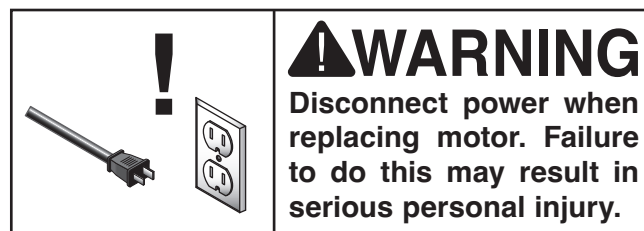
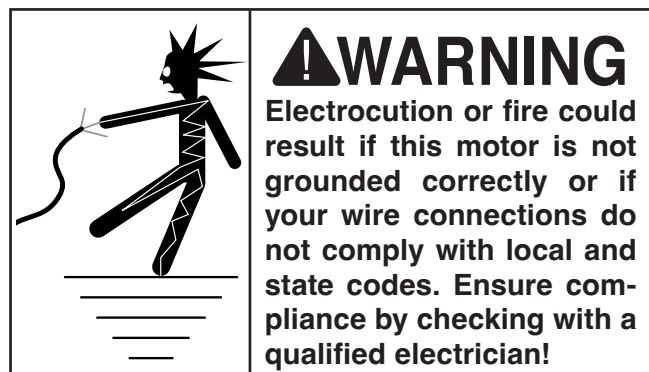
#### Replaceable Parts



REF	PART #	DESCRIPTION
1	P2904001	S CAPACITOR COVER
2	P2904002	S CAPACITOR 200M 125V 1-3/8 X 2-3/8
3	P2904003	WIRING COVER PLATE
4	P2904004	CENTRIFUGAL SWITCH 5/8-3450
5	P2904005	CONTACT PLATE
6	P2904006	BALL BEARING 6202ZZ
7	P2904007	BALL BEARING 6203ZZ
8	P2904008	KEY 3/16 X 3/16 X 1-1/4

#### Making Wire Connections

If you are unsure how to attach wires to terminals, DO NOT continue. Contact an electrician for assistance. Connecting wires improperly may cause them to come loose or contact other wires, which can cause electrocution, fire, or a short.

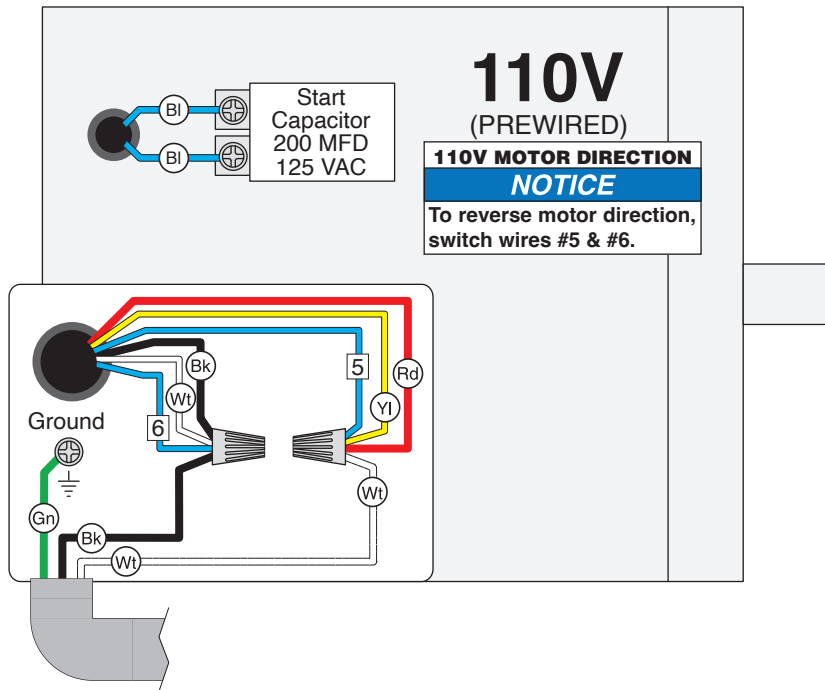


COPYRIGHT © JULY, 2012 BY GRIZZLY INDUSTRIAL, INC., REVISED FEBRUARY, 2025 (LW)  
 NO PORTION OF THIS INSTRUCTION SHEET MAY BE REPRODUCED IN ANY SHAPE  
 OR FORM WITHOUT THE WRITTEN APPROVAL OF GRIZZLY INDUSTRIAL, INC.  
 (FOR MODELS MFD. SINCE 02/25) #KN15080 PRINTED IN TAIWAN

V2.02.25

\*\*\*Keep for Future Reference\*\*\*

# G2904 Wiring Diagram



COLOR KEY	
BLACK	Bk
WHITE	Wt
GREEN	Gn
RED	Rd
YELLOW	Yl
BLUE	Bl

**NOTICE**

The motor wiring shown here is current at the time of printing, but it may not match your motor. Always use the wiring diagram inside the motor junction box.

