



# MODEL H2882 7 1/2" PNEUMATIC DRUM SANDER INSTRUCTION SHEET

<b>⚠ WARNING</b>	
	<b>EYE/EAR INJURY HAZARD!</b> Wear safety glasses and hearing protection during use of this tool!
	<b>OVER INFLATION HAZARD!</b> Never exceed 8 PSI!
	<b>RESPIRATORY HAZARD!</b> Sanding produces fine dust. Wear the appropriate protection during use!

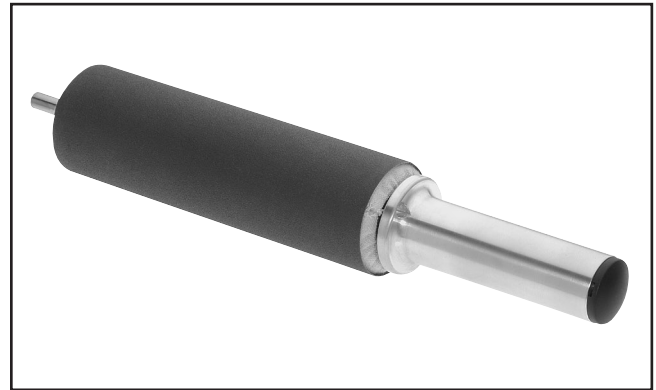


Figure 1. Model H2882.



Figure 2. Model H2882 in action.

## Introduction

This rolling-pin style pneumatic drum sander is perfect for hand contouring and smoothing projects that are too large to use with a stationary sander. Simply chuck the 3/8" spindle into a portable electric drill, cordless drill or air powered drill for two-handed control. Choose this 7 1/2" x 2 1/4" diameter size for getting into tight areas. Features ball bearing handle and air valve for easy bicycle pump inflation.

## Inventory

- A. Drum Sander..... 1
- B. Spare Valve Cap..... 1

## Operation

Slide the sanding sleeve over the drum. Remove the plastic cap on the handle with a small screw driver to expose the air valve. Inflate to the desired pressure. DO NOT exceed 8 PSI!

## 7 1/2" Aluminum Oxide Sanding Sleeves

- H3881** 2 1/4" x 7 1/2" x 60 Grit
- H3882** 2 1/4" x 7 1/2" x 100 Grit
- H3883** 2 1/4" x 7 1/2" x 150 Grit
- H3884** 2 1/4" x 7 1/2" x 180 Grit
- H3885** 2 1/4" x 7 1/2" x 220 Grit
- H3886** 2 1/4" x 7 1/2" x 320 Grit

*If you need help with your new pneumatic tool, call our Tech Support at: (570) 546-9663.*

COPYRIGHT © MARCH, 2006 BY GRIZZLY INDUSTRIAL, INC.  
**WARNING: NO PORTION OF THIS MANUAL MAY BE REPRODUCED IN ANY SHAPE OR FORM WITHOUT THE WRITTEN APPROVAL OF GRIZZLY INDUSTRIAL, INC.**  
#PC8029 PRINTED IN TAIWAN