



MODEL H3184 COMPACT BENDER INSTRUCTION SHEET

For questions or help with this product contact Tech Support at (570) 546-9663 or techsupport@grizzly.com

Introduction

This compact bender is perfect for bending up to 5/8" round or square bar, or 5/16" x 2" flat stock.

Inventory (Figure 2)

Major Components	Qty
A. Base	1
B. Yoke Arm	1
C. Handle	1
D. Bending Bracket.....	1

Minor Components and Hardware	Qty
• Lock Washers 10mm.....	3
• Flat Washers 10mm	4
• Hex Nuts M10-1.5	4
• Hex Bolt M10-1.5 x 30	1
• Hex Bolt M10-1.5 x 120	1
• Flat Head Pin 40 x 6	1
• Flat Head Screws M10-1.5 x 35.....	2
• Spring Cotter Pin.....	1
• Clevis Pin	1
• Adjustable Stop 10 x 40	1
• Large Hitch Pin 100 x 14.....	1
• Small Hitch Pin 75 x 14.....	1
• Large Spacer 70 x 25 x 10.....	1
• Small Spacers 8 x 16 x 11	3
• Stop Pin 11 x 9.....	1
• Stop Block Support Pin 16 x 10	1
• Stop Block 1 7/8" x 1 1/2" x 1 1/2".....	1
• Angle Bending Attachment.....	1
• Steel Dies 1", 1 1/4", 1 3/4", 2", 2 1/2", 3"	1 Ea.
• Steel Dies 1 1/2"	2

If you need help with your new compact bender, call our Tech Support at: (570) 546-9663.



Figure 1. Model H3184 Compact Bender.

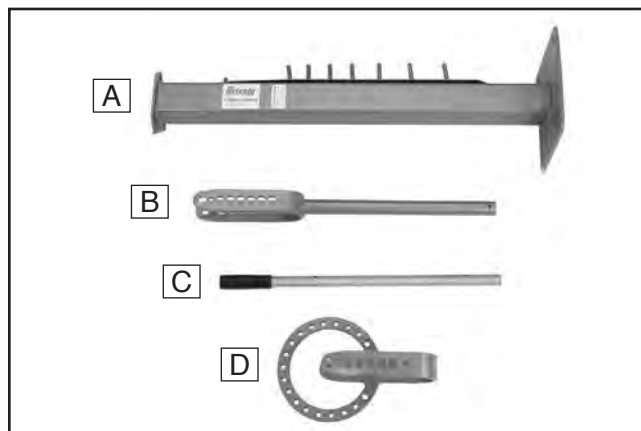


Figure 2. Model H3184 Inventory.

COPYRIGHT © APRIL, 2006 BY GRIZZLY INDUSTRIAL, INC. REVISED MARCH, 2025 (CM)
**WARNING: NO PORTION OF THIS MANUAL MAY BE REPRODUCED IN ANY SHAPE
 OR FORM WITHOUT THE WRITTEN APPROVAL OF GRIZZLY INDUSTRIAL, INC.**
 (FOR MODELS MFD. SINCE 10/02) #JK8180 PRINTED IN CHINA

V1.03.25

Keep for Future Reference

Assembly

Use the breakdown on **Page 4** to help assemble your compact bender.

To assemble your compact bender:

1. Mount the bending bracket to the base using the components shown in **Figure 3**.

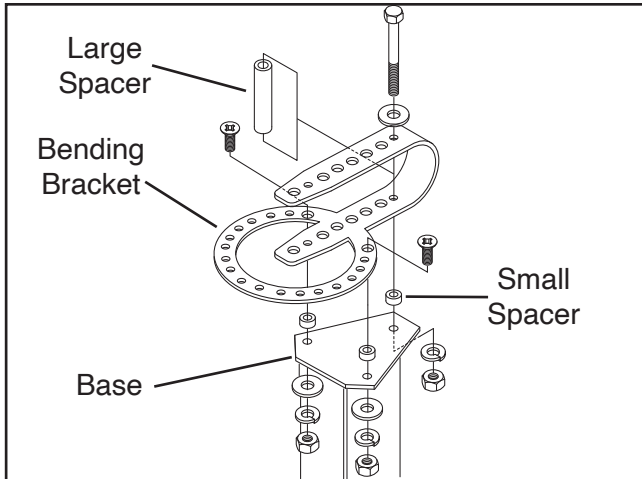


Figure 3. Mounting bending bracket to base.

2. Connect the yoke arm and handle together with the clevis pin and the spring cotter pin.
3. Mount the handle assembly onto the bending bracket with a long hitch pin (part #9, **Page 4**).
4. Bolt the compact bender to the floor.

Basic Bending Operations

To perform basic radius bending (Figure 4):

1. Select the die that most closely matches the radius you wish to bend, and install it on the center pin using a long hitch pin.
2. Mount the block support and stop block onto the bending bracket as shown in **Figure 4**. Make sure that the block support is positioned as close to the stop block hitch pin as possible.
4. Select the size of die that will secure the workpiece without the workpiece slipping, and install it on the yoke arm with the short hitch pin. ensure the die is as close to the workpiece as possible.

CAUTION

DO NOT attempt to use the compact bender without it being fastened to a stable surface. Failure to comply can result in personal injury and equipment damage!

5. To limit the bending range, install the fixed stop in the appropriate hole in the outer ring of the bending bracket, shown in **Figure 5**.
6. With stable footing, bend the workpiece by pulling the handle towards you, as shown in **Figure 5**.

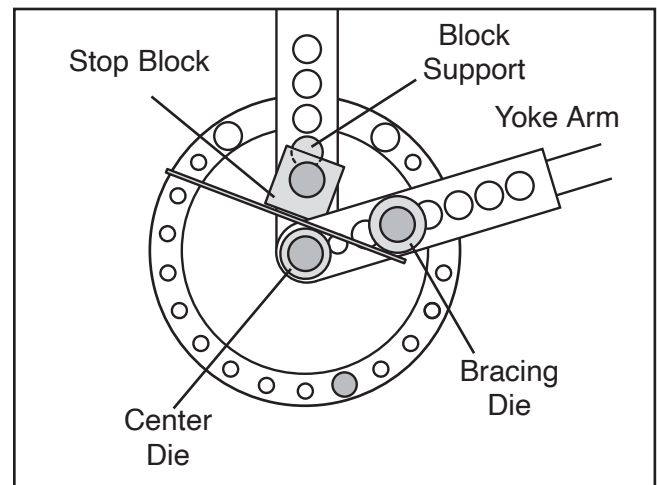


Figure 4. Basic radius bending setup.

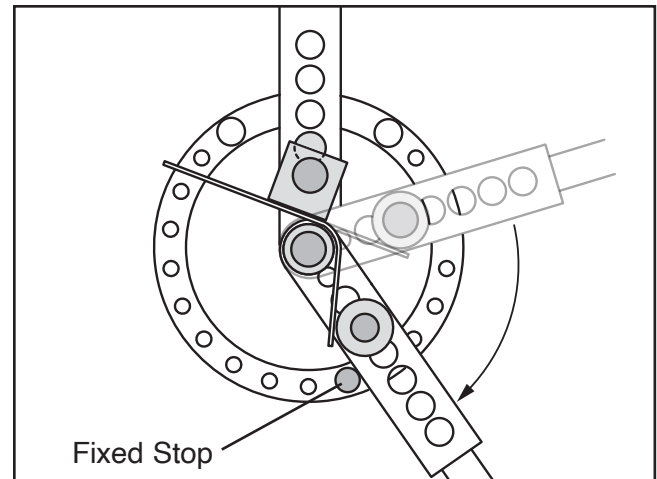


Figure 5. Basic radius bend.



To perform basic angle bending:

1. Mount the block support and angle bending attachment onto the bending bracket as shown in **Figure 6**.
2. Make sure that the block support is positioned as close to the angle bracket hitch pin as possible.
3. Based on the position of the angle bending attachment and workpiece thickness, select two dies that will brace the workpiece properly against the angle bending attachment, and install them as shown in **Figure 6**. For most bending tasks, the 1½" dies are appropriate.

Note: The center pin and die must be mounted at least through the third handle hole, as shown in **Figure 6**, for any bending procedure to be successful. If the center pin is placed in the first or second holes, you will not be able to get enough leverage to properly bend the workpiece.

4. To limit the bending range, install the fixed stop in the appropriate hole in the outer ring of the bending bracket, as shown in **Figure 7**.
5. With a stable footing, bend the workpiece by pulling the handle towards you, as shown in **Figure 7**.

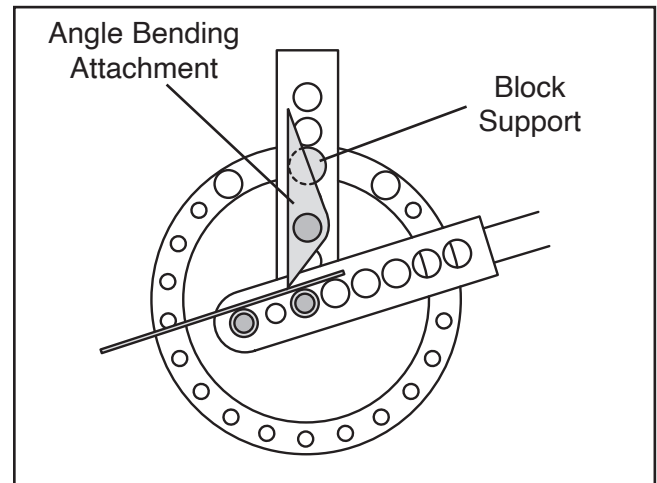


Figure 6. Basic angle bending setup.

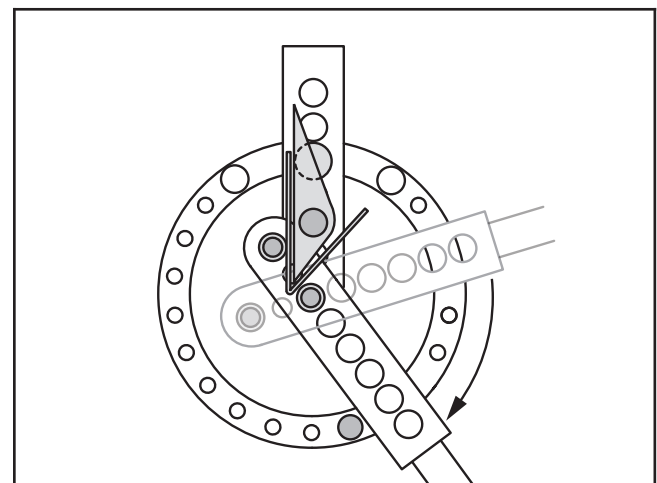
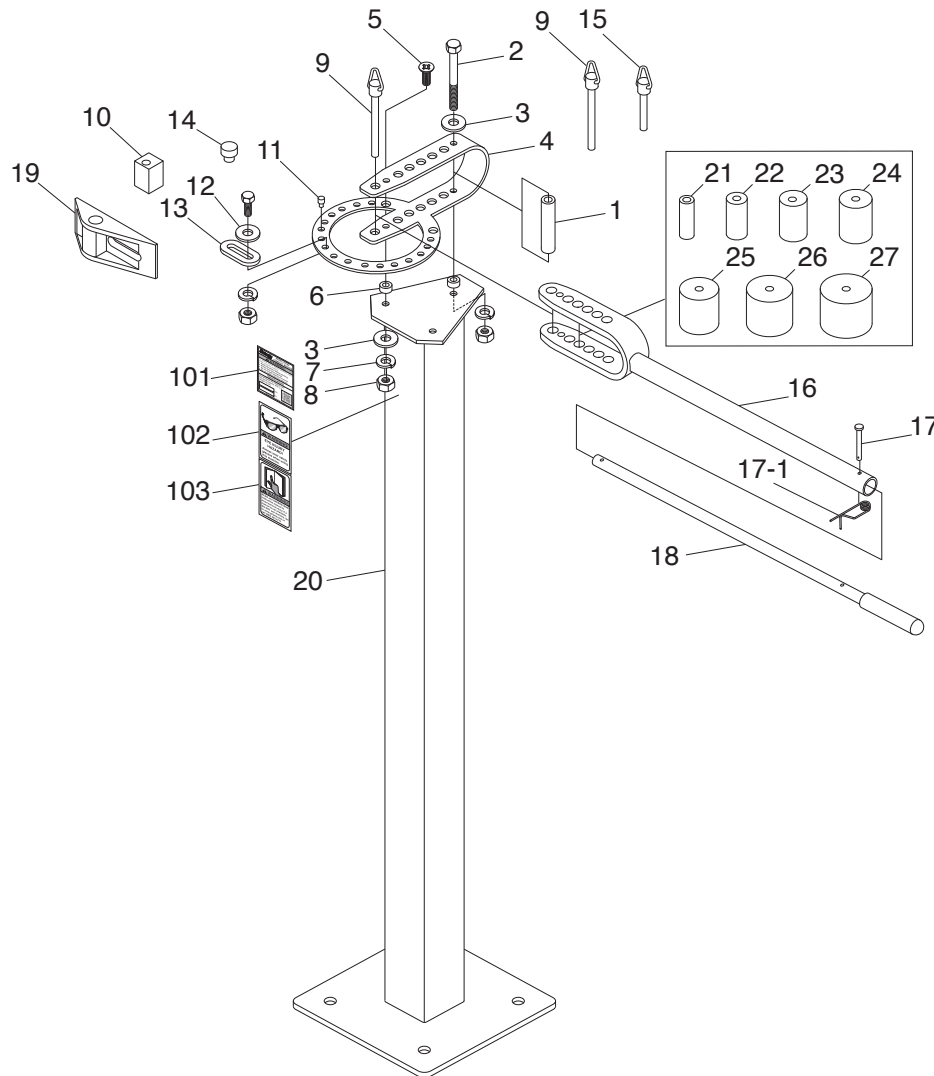


Figure 7. Basic angle bend.



H3184 Breakdown and Parts List



REF	PART #	DESCRIPTION
1	PH3184001	SPACER 70 X 25 X 10
2	PH3184002	HEX BOLT M10-1.5 X 120
3	PH3184003	FLAT WASHER 10MM
4	PH3184004	BENDING BRACKET
5	PH3184005	FLAT HD SCR M10-1.5 X 35
6	PH3184006	SPACER 8 X 16 X 11
7	PH3184007	LOCK WASHER 10MM
8	PH3184008	HEX NUT M10-1.5
9	PH3184009	HITCH PIN 100 X 14
10	PH3184010	STOP BLOCK
11	PH3184011	FIXED STOP
12	PH3184012	HEX BOLT M10-1.5 X 30
13	PH3184013	ADJUSTABLE STOP
14	PH3184014	STOP BLOCK SUPPORT PIN
15	PH3184015	HITCH PIN 75 X 14
16	PH3184016	HANDLE EXTENSION ARM

REF	PART #	DESCRIPTION
17	PH3184017	CLEVIS PIN W/COTTER PIN
17-1	PH3184017-1	HAIRPIN COTTER PIN
18	PH3184018	HANDLE
19	PH3184019	SHARP ANGLE BEND ATTACHMENT
20	PH3184020	BASE
21	PH3184021	DIE 1"
22	PH3184022	DIE 1-1/4"
23	PH3184023	DIE 1-1/2"
24	PH3184024	DIE 1-3/4"
25	PH3184025	DIE 2"
26	PH3184026	DIE 2-1/2"
27	PH3184027	DIE 3"
101	PH3184101	MACHINE ID LABEL
102	PH3184102	READ MANUAL LABEL 2W X 3.3H
103	PH3184103	SAFETY GLASSES LABEL 2W X 3.3H

