

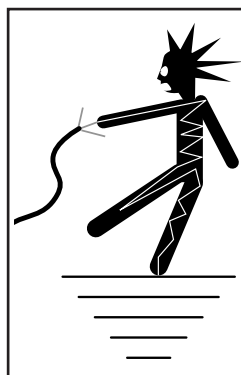


# MODEL H5384 2 HP ELECTRIC MOTOR INSTRUCTIONS

For questions or help with this product contact Tech Support at (570) 546-9663 or techsupport@grizzly.com

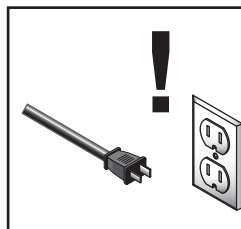
## Model H5384 Specifications

Power ..... 2 HP  
Cycle..... 60Hz  
Voltage..... 220V  
Amps ..... 10.5A  
RPM..... 1725  
Phase ..... Single  
Class..... B



### ! WARNING

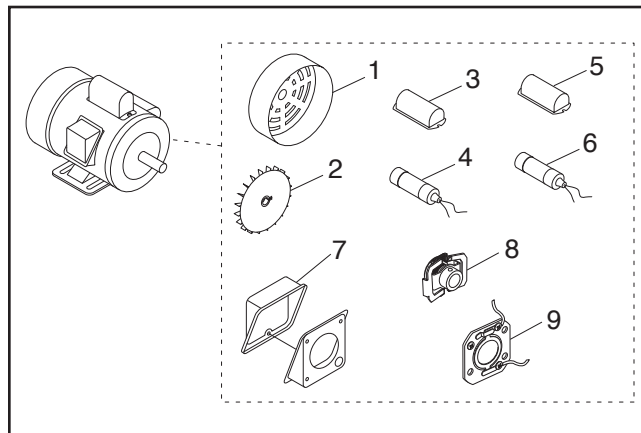
Electrocution or fire could result if this motor is not grounded correctly or if your wire connections do not comply with local and state codes. Ensure compliance by checking with a qualified electrician!



### ! WARNING

Disconnect power when replacing motor. Failure to do this may result in serious personal injury.

## Replaceable Parts



### REF PART # DESCRIPTION

1	PH5384001	MOTOR FAN COVER
2	PH5384002	MOTOR FAN
3	PH5384003	S CAPACITOR COVER
4	PH5384004	S CAPACITOR 400M 125V 1-7/8 X 3-3/8
5	PH5384005	R CAPACITOR COVER
6	PH5384006	R CAPACITOR 70M 250V 1-7/8 X 3-3/8
7	PH5384007	JUNCTION BOX
8	PH5384008	CENTRIFUGAL SWITCH
9	PH5384009	CONTACT PLATE

## Making Wire Connections

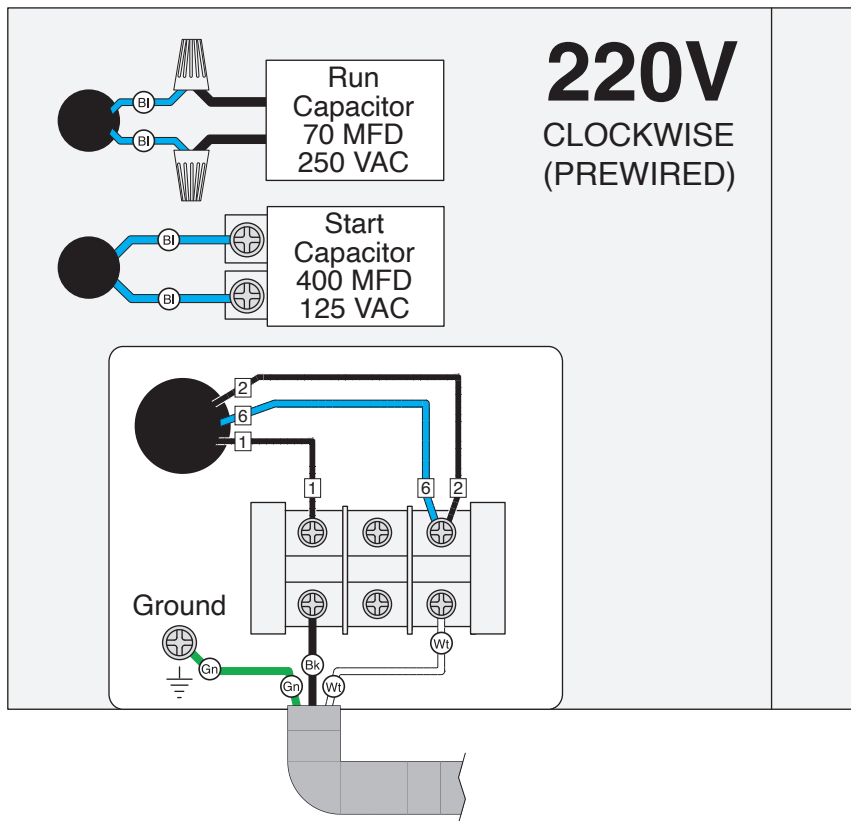
If you are unsure how to attach wires to terminals, DO NOT continue. Contact an electrician for assistance. Connecting wires improperly may cause electrocution, fire, or a short.

COPYRIGHT © DECEMBER, 2007 BY GRIZZLY INDUSTRIAL, INC., REVISED JUNE, 2024 (LW)  
NO PORTION OF THIS INSTRUCTION SHEET MAY BE REPRODUCED IN ANY SHAPE  
OR FORM WITHOUT THE WRITTEN APPROVAL OF GRIZZLY INDUSTRIAL, INC.  
(FOR MODELS MFD. SINCE 08/24) #JB10235 PRINTED IN TAIWAN

V2.06.24

\*\*\*Keep for Future Reference\*\*\*

# H5384 Wiring Diagram



COLOR KEY	
BLACK	Bk
WHITE	Wt
GREEN	Gn
BLUE	Bl

**NOTICE**

The motor wiring shown here is current at the time of printing, but it may not match your motor. Always use the wiring diagram inside the motor junction box.

