

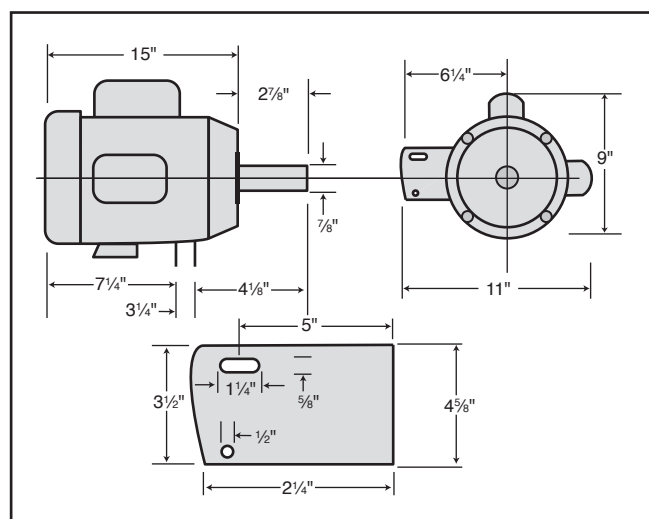


MODEL H5389 5 HP ELECTRIC MOTOR INSTRUCTIONS

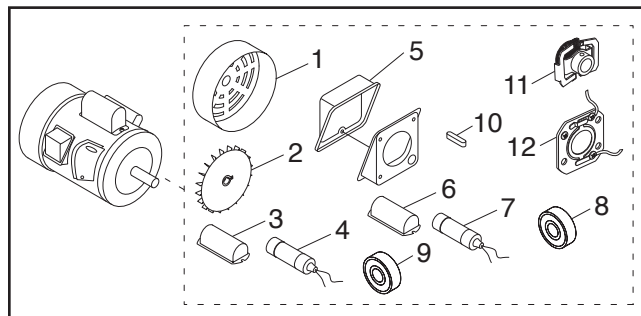
For questions or help with this product contact Tech Support at (570) 546-9663 or techsupport@grizzly.com

Model H5389 Specifications

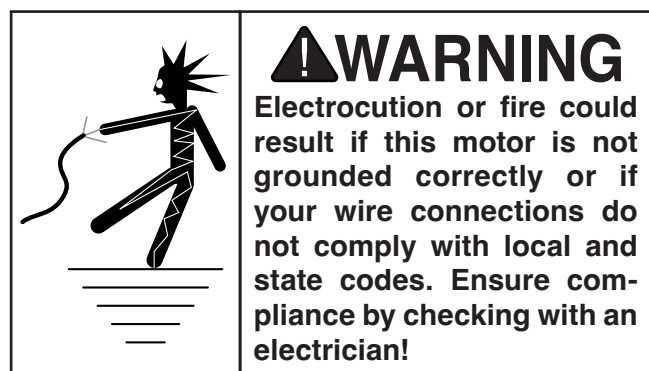
Power 5 HP
Cycle.....60 Hz
Voltage 220V
Amps 25A
Speed 3450 RPM
Phase Single-Phase
Class..... B



Replaceable Parts

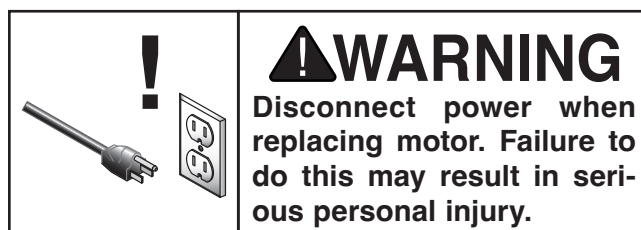


REF	PART #	DESCRIPTION
1	PH5389001	MOTOR FAN COVER
2	PH5389002	MOTOR FAN
3	PH5389003	S CAPACITOR COVER
4	PH5389004	S CAPACITOR 400M 125V 1-3/4 X 3-3/8
5	PH5389005	JUNCTION BOX
6	PH5389006	RUN CAPACITOR COVER
7	PH5389007	R CAPACITOR 50M 350V 1-3/4 X 3-3/8
8	PH5389008	BALL BEARING 6205ZZ
9	PH5389009	BALL BEARING 6203ZZ
10	PH5389010	KEY 5 X 5 X 35
11	PH5389011	CENTRIFUGAL SWITCH 3450 RPM
12	PH5389012	CONTACT PLATE



Making Wire Connections

If you are unsure how to attach wires to terminals, DO NOT continue. Contact an electrician for assistance. Connecting wires improperly may cause them to come loose or contact other wires, which can cause electrocution, fire, or a short.



COPYRIGHT © NOVEMBER, 2013 BY GRIZZLY INDUSTRIAL, INC., REVISED NOVEMBER, 2024 (LW)
NO PORTION OF THIS INSTRUCTION SHEET MAY BE REPRODUCED IN ANY SHAPE
OR FORM WITHOUT THE WRITTEN APPROVAL OF GRIZZLY INDUSTRIAL, INC.
(FOR MODELS MFD. SINCE 08/24) #DM16091 PRINTED IN TAIWAN

V2.11.24

Keep for Future Reference

H5389 Wiring Diagram



COLOR KEY	
BLACK	Bk
WHITE	Wt
GREEN	Gn
RED	Rd
BLUE	Bl

NOTICE
 The motor wiring shown here is current at the time of printing, but it may not match your motor. Always use the wiring diagram inside the motor junction box.

