



MITER SAW WORK STAND MODEL H7657 INSTRUCTION SHEET

Safety

1. **MITER SAW SAFETY.** Follow all safety instructions in the miter saw manual.
2. **MITER SAW WORK STAND SET UP.** Make sure the leg locking pins are fully snapped into place before mounting the miter saw.
3. **MITER SAW WORK STAND PLACEMENT.** Only operate the miter saw work stand on a hard, flat, and level surface. DO NOT set up the miter saw work stand on a soft surface, such as sand or mud.
4. **MITER SAW WORK STAND USAGE.** Only use the miter saw work stand to support a miter saw. This stand is NOT intended for use as a ladder or scaffolding.
5. **WORKPIECE BALANCE.** Use extra support tables, or get assistance, when working with large workpieces to prevent the stand from tipping over.
6. **ATTACH MITER SAW SECURELY.** DO NOT operate the miter saw unless it is securely attached to the miter saw work stand.
7. **LOCK WORK SUPPORTS.** Tighten lock knobs to secure the work supports before using the miter saw work stand.
8. **EXPERIENCING DIFFICULTIES.** If at any time you are experiencing difficulties performing the intended operation, stop using this stand! Contact Tech Support at (570) 546-9663 for help.

Introduction

The Model H7657 Miter Saw Work Stand (**Figure 1**) features a universal, adjustable T-track mounting system for securing miter saws without modification. Laterally and vertically adjustable ball bearing rollers on each end of the stand support long workpieces. Roller mounts rotate incrementally for fine height adjustment. Folding legs and rubber wheels make this work stand portable.



Figure 1. Model H7657.

Unpacking

The Model H7657 was carefully packed when it left our warehouse. If you discover this stand is damaged after you have signed for delivery, *please immediately call Customer Service at (570) 546-9663 for advice.* Save the containers and all packing materials for possible inspection by the carrier or its agent. *Otherwise, filing a freight claim can be difficult.* When you are completely satisfied with the condition of your shipment, you should inventory the contents.

Inventory

Box Contents: (Figure 2)	Qty
A. Stand (not shown)	1
B. Wheels	2
C. Wheel Brackets	4
D. Roller Assembly	2
E. Crossbar	2

Hardware:	Qty
—Support Braces.....	2
—Hex Bolts M8-1.25 x 45	2
—Hex Bolts M6-1 x 45	12
—Flat Washers 6mm	12
—Hex Nuts M6-1.....	12
—Lock Nuts M8-1.25.....	2
—Knobs M8-1.25 x 50	4
—Knobs M8-1.25 x 20.....	2
—Hex Bolts M8-1.25 x 50	4
—Hex Nuts M8-1.25.....	8
—Flat Washers 8mm	4

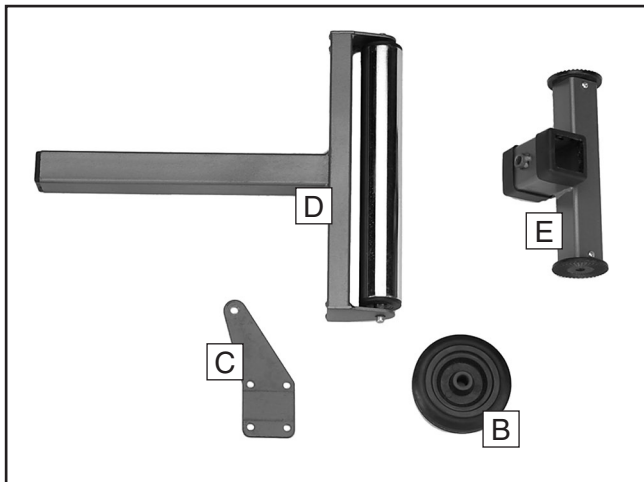


Figure 2. Model H7657 inventory.

In the event that any nonproprietary parts are missing (e.g. a nut or a washer), we would be glad to replace them, or for the sake of expediency, replacements can be obtained at your local hardware store.

Assembly

This work stand comes partially assembled. You will need to install the wheels, the support rollers, and your miter saw.

To assemble the miter saw work stand:

1. Lay the work stand upside down and unfold the top set of legs (inset in **Figure 3**). Make sure the locking pins snap into place.
2. Place a wheel bracket on either side of the wheel and thread an M8-1.25 x 45 hex bolt through the assembly (**Figure 3**), then secure it with a flat washer and a lock nut.

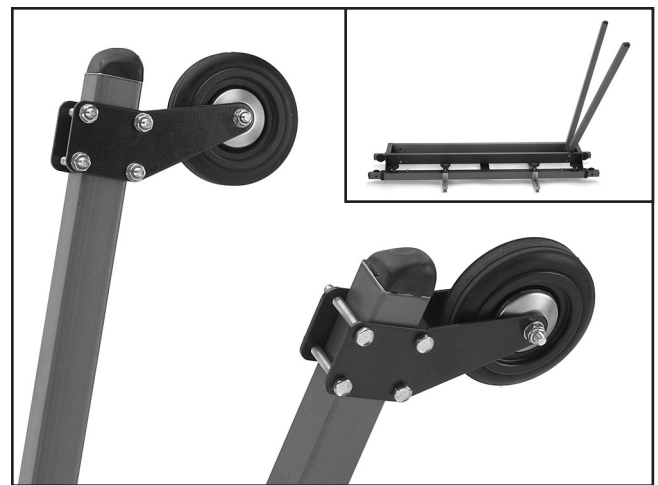


Figure 3. Wheel assembly.

3. Place the wheel brackets on either side of the stand leg and thread M6-1 x 45 hex bolts through the wheel brackets (**Figure 3**) and loosely secure them with flat washers and hex bolts.
4. Unfold the remaining legs and install the support braces between the legs with M6-1 x 45 hex bolts, flat washers, and hex nuts.

Note: *This step is optional. Installing the support braces adds stability, but makes folding the work stand more difficult.*

5. Place the work stand upright, move the bottom of the wheels approximately an $\frac{1}{8}$ " above the floor and tighten the hex nuts.
6. Place the roller crossbar between the extension arms and thread in the M8-1.25 x 50 knobs as shown in **Figure 4**.

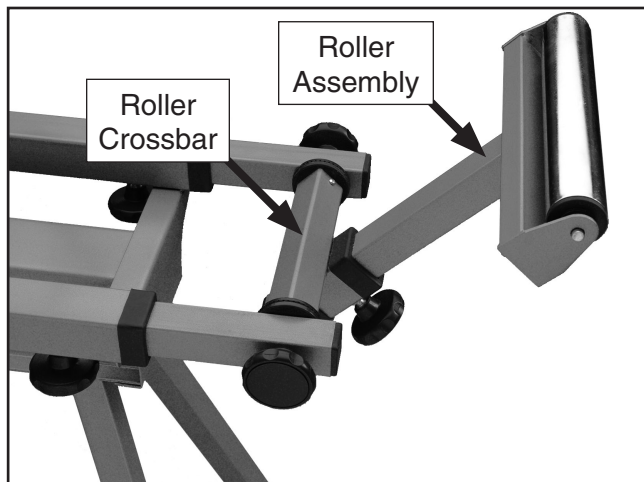


Figure 4. Support roller assembly.

7. Slide the roller assembly into the crossbar and secure it with an M8-1.25 x 20 knob (**Figure 4**).
8. Loosen the T-track lock knobs and adjust the T-tracks to the width of your miter saw, then slide the heads of two M8-1.25 x 50 hex bolts into each T-track.
9. Place the miter saw over the bolts and secure it with washers and hex nuts (see **Figure 5**).

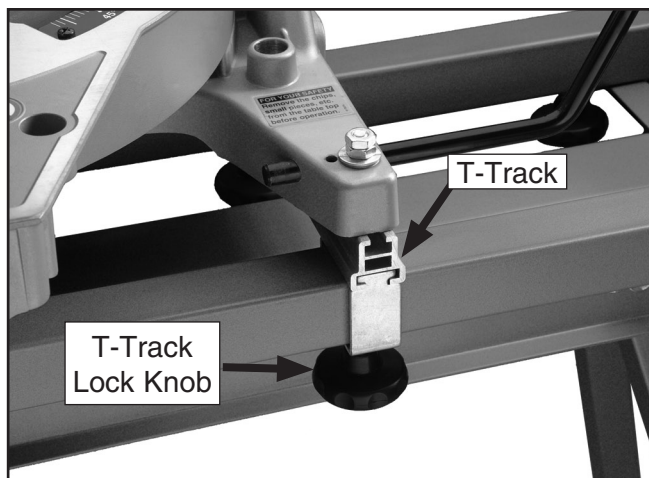


Figure 5. Mounting the miter saw.

Adjustment

To adjust the work stand:

1. Slide the extension arms out to their maximum reach and place a straight 2x4 across the miter saw table and rollers.
2. Loosen the crossbar knobs and rotate the roller assemblies until the rollers almost touch the 2x4 as shown in **Figure 6**. Then loosen the roller assembly lock knobs and slide the rollers up to touch the 2x4.

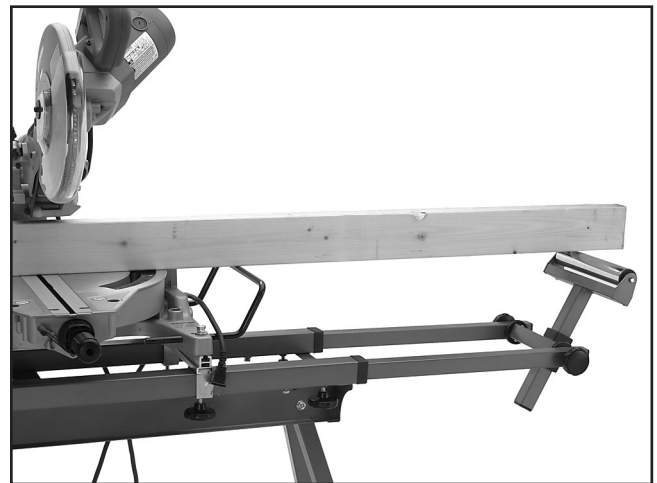


Figure 6. Adjusting the support rollers.

Storage

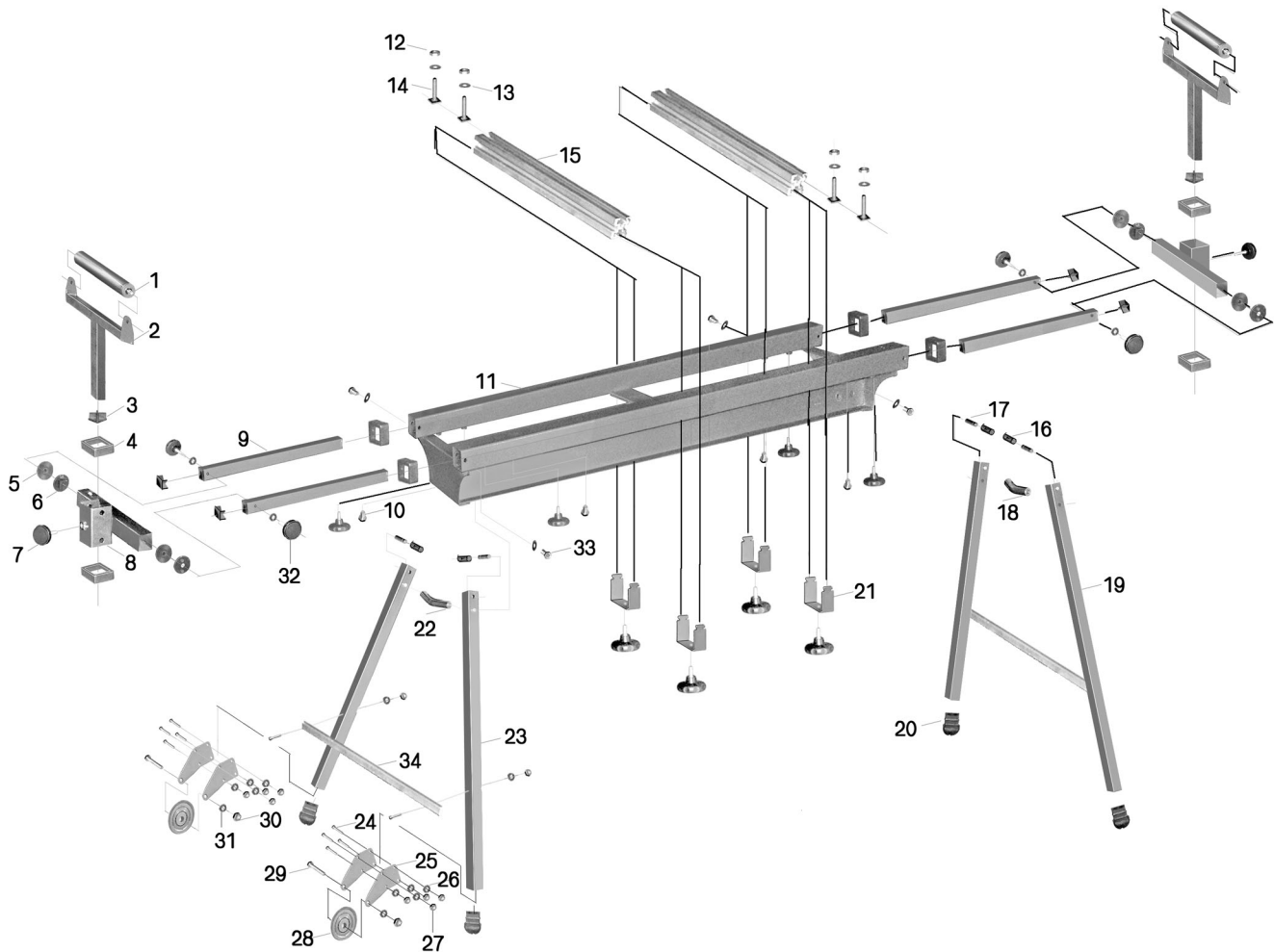
To fold up the work stand:

1. Remove the support braces, retract the extension arms and rotate the support rollers flat.
2. Push in the locking pins shown in **Figure 7** and fold the legs up into the stand.



Figure 7. Folding the miter saw work stand.

H7657 Parts Breakdown and List



REF	PART #	DESCRIPTION
1	PH7657001	ROLLER
2	PH7657002	SUPPORT
3	PH7657003	END PLUG
4	PH7657004	BUSHING
5	PH7657005	OUTSIDE GEAR
6	PH7657006	INSIDE GEAR
7	PH7657007	LOCK KNOB M8-1.25 X 20
8	PH7657008	ROLLER CROSSBAR
9	PH7657009	EXTENSION ARMS
10	PB06M	HEX BOLT M8-1.25 X 12
11	PH7657011	STAND
12	PN03M	HEX NUT M8-1.25
13	PH7657013	FENDER WASHER 8MM
14	PB22M	HEX BOLT M8-1.25 X 50
15	PH7657015	T-TRACK
16	PH7657016	COMPRESSION SPRING
17	PH7657017	PIN

REF	PART #	DESCRIPTION
18	PH7657018	SMALL AXLE
19	PH7657019	RIGHT LEG
20	PH7657020	FOOT
21	PH7657021	T-TRACK LOCKING PLATE
22	PH7657022	BIG AXLE
23	PH7657023	LEFT LEG
24	PB71M	HEX BOLT M6-1 X 45
25	PH7657025	WHEEL BRACKET
26	PW03M	FLAT WASHER 6MM
27	PN01M	HEX NUT M6-1
28	PH7657028	WHEEL
29	PB118M	HEX BOLT M8-1.25 X 45
30	PLN04M	LOCK NUT M8-1.25
31	PW01M	FLAT WASHER 8MM
32	PH7657032	LOCK KNOB M8-1.25 X 30
33	PB03M	HEX BOLT M8-1.25 X 16
34	PH7657034	SUPPORT BRACE