



For questions or help with this product contact Tech Support at (570) 546-9663 or techsupport@grizzly.com

MODEL T1187 WORK TABLE FOR PORTABLE EDGEBANDER INSTRUCTIONS

Introduction

The T1187 Work Table (see **Figure 1**) converts the G0825 Portable Edgebander to a stationary edgebander for easy edgebanding of small workpieces. The T1188 Trimmer can also be mounted to the work table using the included mounting plate (see **Figure 2**) to greatly simplify the trimming process for newly edgebanded workpieces.

For those wanting to use the work table as a production center for small straight-edged workpieces, Grizzly also offers the optional T28380 Fence/ Guide Kit, which includes fences for both the Edgebander and Trimmer, and a pressure-assist guide system that holds the work firmly against the fence during operation.



Figure 1. Model T1187 Work Table.



Figure 2. Mounting Plate for T1188 Trimmer.

T1187 Edgebander Table Accessories

T28380—Guide Component Kit—Straight Workpieces

The Work Table Fence/Guide Kit includes an infeed and outfeed fence for straightedge workpieces, adjustable workpiece pressure bar, and router fence compatible with the T1188 Edgebanding Trimmer for perfect edging every time. Includes hardware to mount to T1187.

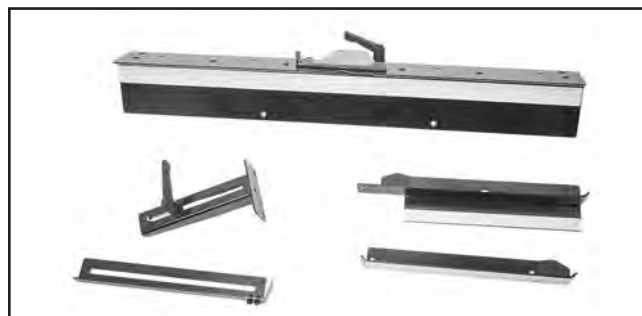


Figure 3. T28380 Guide Component Kit.

T1188—Edgebander Trimmer

This trimmer features a micro-adjustment scale for precision edging for a perfect finish. Also included is a built-in dual-purpose razor for removing edgebanding by hand. A built-in dust-collection cover keeps clean-up to a minimum.



Figure 4. T1188 Edgebander Trimmer.

Inventory

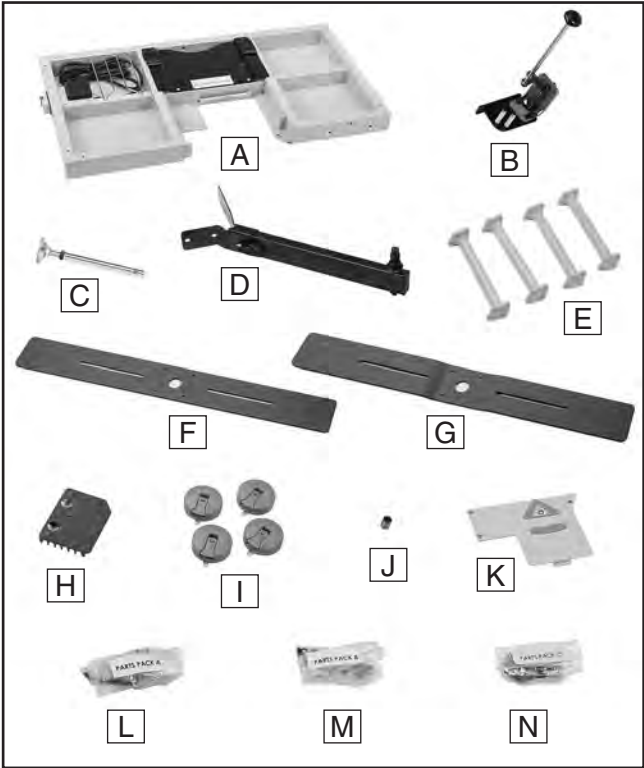


Figure 5. Inventory items.

Inventory List

Description	Qty
A. Table.....	1
B. Edgebanding Cutter Assembly.....	1
C. Support Leg w/Adjustable Foot.....	1
D. Mounting Arm & Mounting Brackets.....	1
E. Table Legs.....	4
F. Upper Coil Support Arm.....	1
G. Lower Coil Support Arm.....	1
H. Heat Cover Insert.....	1
I. Suction Cups.....	4
J. Table Magnets.....	6
K. Edge Trimmer Plate.....	1
L. Hardware Bag A	
—Cap Screws M6-1 x 16.....	11
—Lock Washers 6mm.....	12
—Hex Nuts M6-1.....	4
—Cap Screws M6-1 x 40.....	4
—Fender Washers 6mm.....	4
—Hex Wrench 6mm.....	1
—Hex Wrench 5mm.....	1
M. Hardware Bag B	
—Button Head Cap Screw M8-1.25 x 70...	1
—Fender Washers 8mm.....	2
—Flat Washers 8mm.....	5
—Cap Screws M8-1.25 x 20.....	5
—Lock Washers 8mm.....	5
N. Hardware Bag C	
—Flat Head Screws M4-.7 x 15.....	3
—Flat Head Screws M5-.8 x 10.....	4
—Hex Nut M20-2.5.....	1
—Flat Washer 20mm.....	1
—Carriage Bolts M6-1 x 12.....	4
—Fender Washers 6mm.....	4
—Wing Nuts M6-1.....	4
—Barrier Plates.....	4



Assembling Table

1. Attach table legs to table using (8) M6-1 x 16 cap screws and (8) 6mm lock washers (see **Figure 6**).

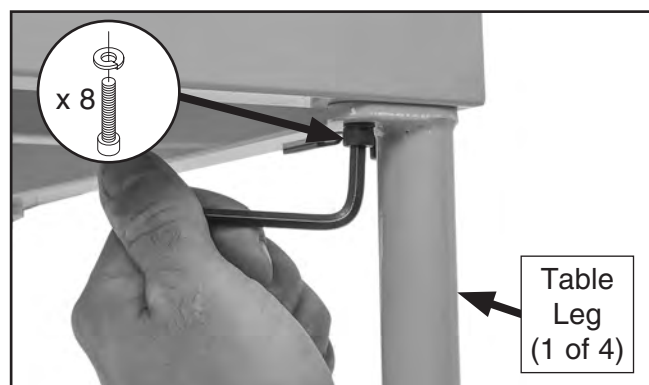


Figure 6. Attaching table leg (1 of 4).

2. Attach mounting arm and cutter assembly to work table using (5) M8-1.25 x 20 cap screws, (5) 8mm lock washers, and (5) 8mm flat washers (see **Figure 7**).

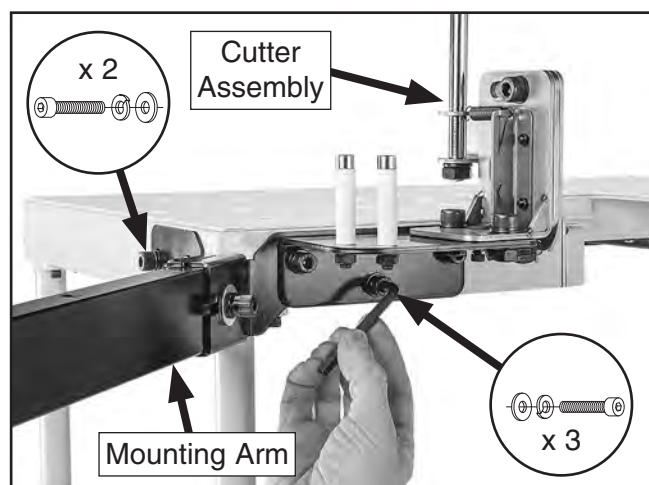


Figure 7. Attaching mounting arm and cutter assembly to work table.

3. Attach support leg to mounting arm with (1) M8-1.25 x 70 button head cap screw and (2) 8mm fender washers (see **Figure 8**).

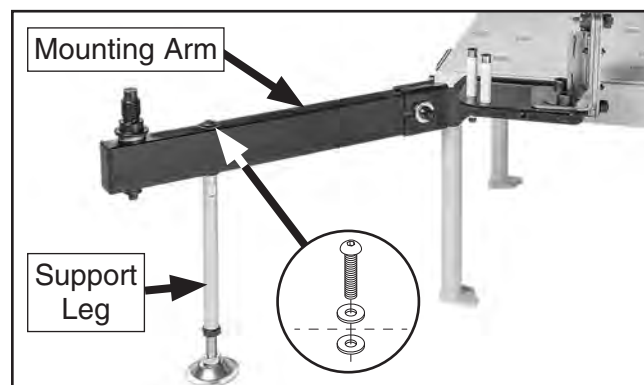


Figure 8. Support leg attached to mounting arm.

4. Place lower coil support arm over shaft on mounting arm, then place upper coil support arm over shaft, as shown in **Figure 9**. Secure with (1) 20mm flat washer, (1) M20-2.5 hex nut, and (4) M5-.8 x 10 flat head screws.

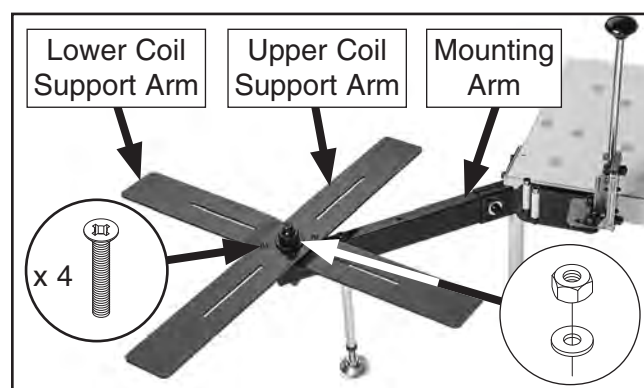


Figure 9. Coil support arms attached.

5. Attach (4) barrier plates to coil supports using (4) M6-1 x 12 carriage bolts, (4) 6mm fender washers, and (4) M6-1 wing nuts, as shown in **Figure 10**.

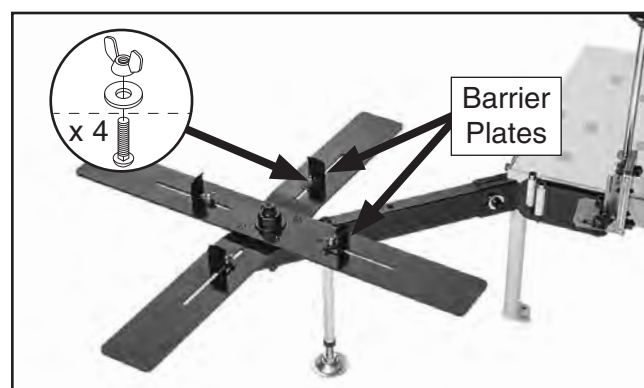


Figure 10. Barrier plates attached to coil support.



Mounting Table to Workbench

Proper edgebanding adhesion requires operator to press workpiece firmly against optional infeed and outfeed fences, such as T28380. Therefore, we strongly recommend mounting the edgebander work table legs to a stable work surface using one of the methods outlined below.

Number of Mounting Holes 4
Diameter of Mounting Hardware Needed .. 1/4"

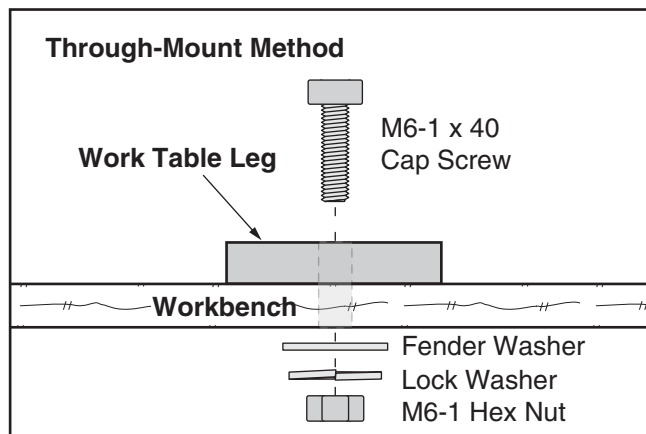


Figure 11. "Through-Mount" setup with supplied hardware.

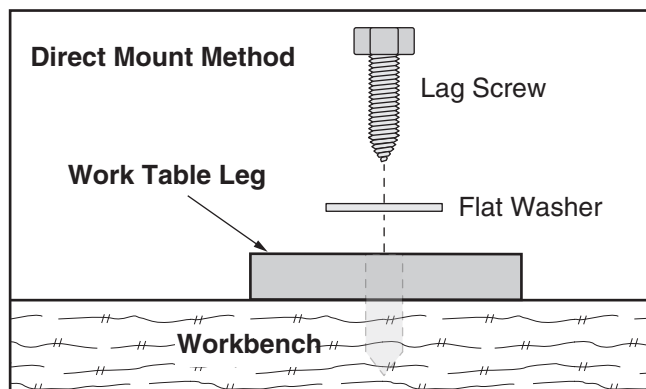


Figure 12. "Direct Mount" setup.

Use the (4) supplied M6-1 x 40 cap screws, (4) 6mm fender washers, (4) 6mm lock washers, and (4) M6-1 hex nuts if the through-mount method suits your workbench, or obtain your own mounting fasteners.

After mounting the T1187 to a stable work surface, use the adjustable foot on the support leg to support the mounting arm.

Mounting Edgebander to Table

1. Secure portable edgebander inside work table cutout (see **Figure 13**) using (3) M6-1 x 16 cap screws.

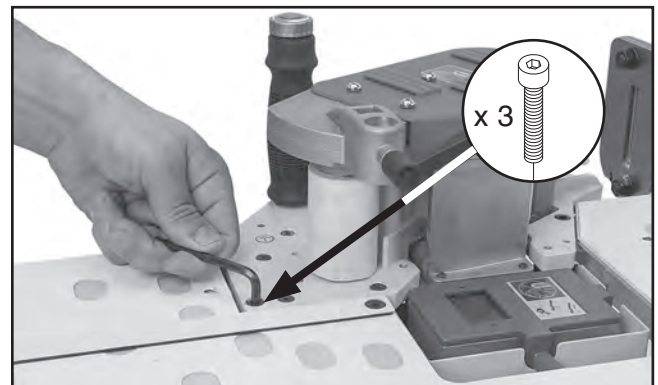


Figure 13. Securing edgebander to table.

2. Insert protective heat cover (see **Figure 14**) over glue pot access.

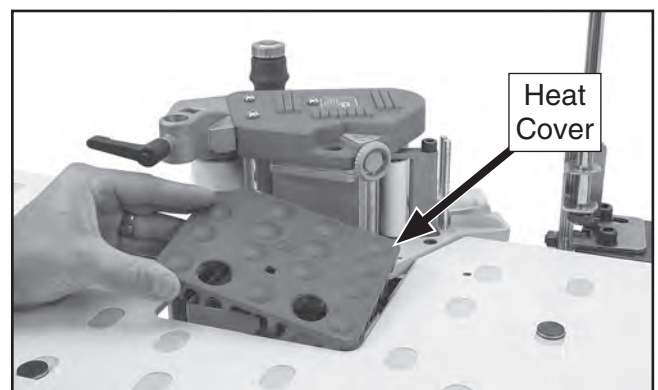


Figure 14. Inserting heat cover into table.

3. Plug portable edgebander power cord into power receptacle under main table, as shown in **Figure 15**, then plug work table power cord into wall receptacle.

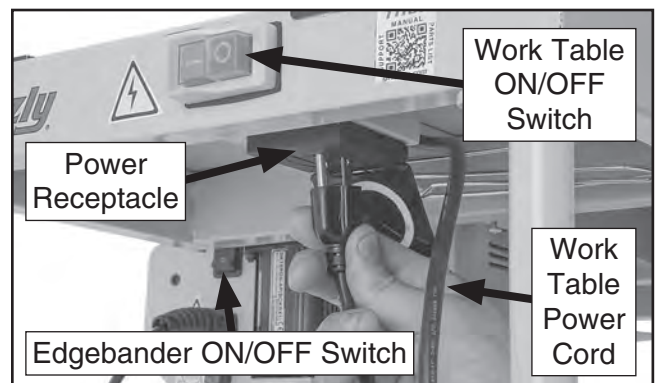


Figure 15. Plugging edgebander into table power receptacle.



Using Work Table with Edgebander

1. Turn work table ON/OFF switch **ON**, then turn portable edgebander ON/OFF switch **ON** (see **Figure 15**). Set edgebander to appropriate glue temperature setting using indicator arrows (↔) (see **Figure 16A**).

2. Press heater element ON/OFF button (⏻) (see **Figure 16A**) to turn glue pot **ON**—glue pot indicator light (💡) should illuminate.

Note: When glue pot temperature reaches 250°F (120°C), feed roller preheat light (💡) on control panel and green light on control handle (see **Figure 16B**) will illuminate.

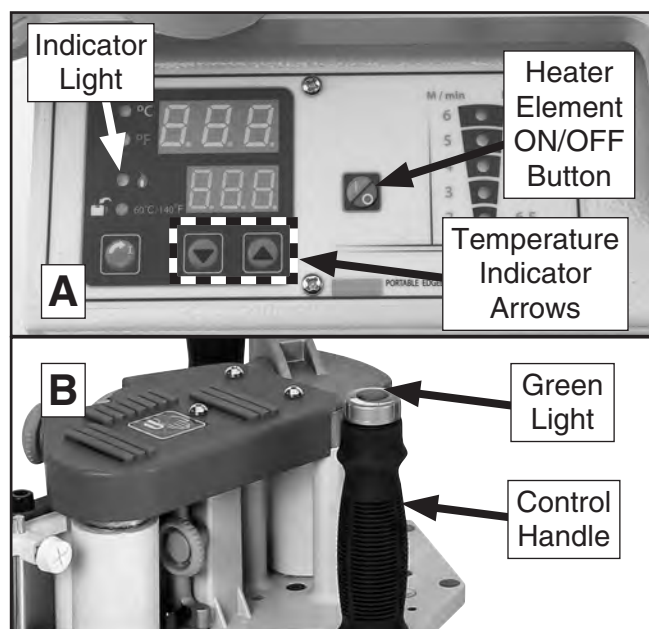


Figure 16. Control handle location.

3. Place edgebanding tape on coil support arms, adjust or remove barrier plates as needed, and feed tape between guide posts through trimmer assembly and into portable edgebander infeed guide (see **Figure 17**).

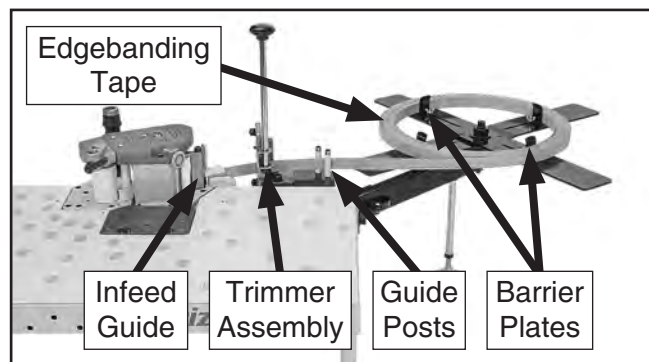


Figure 17. Feeding edgebanding tape.

4. Adjust infeed guide height if necessary until guide lightly contacts top of edgebanding tape.

Note: Infeed guide alignment ensures proper edgebanding tape application on workpiece.

5. Press ON/OFF button on control handle (see **Figure 18**) to start feed rollers. Adjust feed roller speed setting by turning feed rate dial.

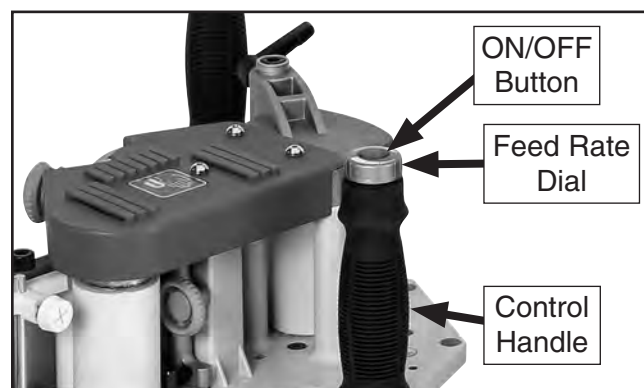


Figure 18. Location of control handle, feed rate dial, and ON/OFF button.

6. When end of workpiece approaches heating plate (see **Figure 19**), pull cutter handle to trim edgebanding tape, while continuing to move workpiece along fence.

Tip: Once edgebanding tape is applied to workpiece, firmly press edgebanded edge on a smooth, flat surface to ensure proper adhesion.

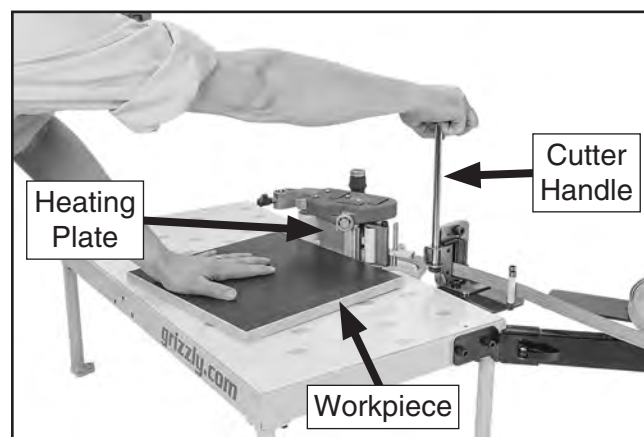
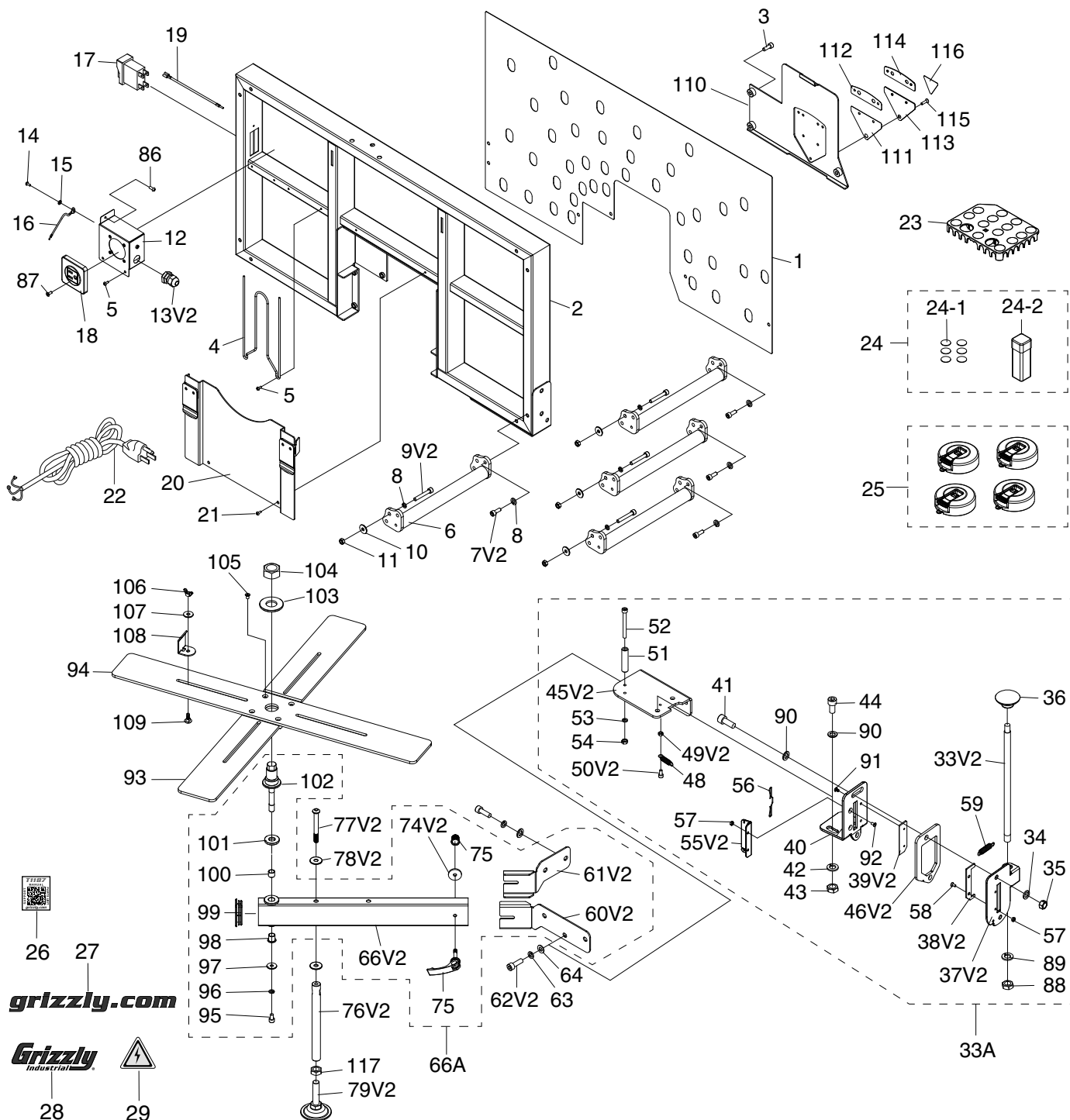


Figure 19. Trimming edgebanding.



Parts Breakdown



⚠ WARNING

Safety labels help reduce the risk of serious injury caused by machine hazards. If any label comes off or becomes unreadable, the owner of this machine **MUST** replace it in the original location before resuming operations. For replacements, contact (800) 523-4777 or www.grizzly.com.

Please Note: We do our best to stock replacement parts whenever possible, but we cannot guarantee that all parts shown here are available for purchase. Call (800) 523-4777 or visit our online parts store at www.grizzly.com to check for availability.



Parts List

REF	PART #	DESCRIPTION
1	PT1187001	WORK TABLE SURFACE
2	PT1187002	WORK TABLE FRAME
3	PT1187003	CAP SCREW M6-1 X 16
4	PT1187004	WIRE RETAINER
5	PT1187005	PHLP HD SCR M4-.7 X 10
6	PT1187006	TABLE LEG
7V2	PT1187007V2	CAP SCREW M6-1 X 16
8	PT1187008	LOCK WASHER 6MM
9V2	PT1187009V2	CAP SCREW M6-1 X 40
10	PT1187010	FLAT WASHER 6MM
11	PT1187011	HEX NUT M6-1
12	PT1187012	POWER JUNCTION BOX
13V2	PT1187013V2	STRAIN RELIEF TYPE-3 PG9 V2.11.17
14	PT1187014	PHLP HD SCR M4-.7 X 10
15	PT1187015	LOCK WASHER 4MM
16	PT1187016	GROUND WIRE
17	PT1187017	ON/OFF SWITCH KEDU KJD17 120V
18	PT1187018	JUNCTION BOX COVER PLATE
19	PT1187019	SWITCH WIRES (2-PC)
20	PT1187020	BOTTOM PLATE
21	PT1187021	PHLP HD SCR M4-.7 X 10
22	PT1187022	POWER CORD 110V 72" 5-15P
23	PT1187023	TABLE INSERT COVER
24	PT1187024	TABLE MAGNET ASSEMBLY
24-1	PT1187024-1	TABLE MAGNETS (6-PC)
24-2	PT1187024-2	MAGNET CASE
25	PT1187025	SUCTION HANDLES (4-PC)
26	PT1187026	QR CODE LABEL
27	PT1187027	GRIZZLY.COM LABEL
28	PT1187028	GRIZZLY LOGO LABEL
29	PT1187029	ELECTRICITY LABEL
33A	PT1187033A	TRIMMER ASSEMBLY
33V2	PT1187033V2	SHAFT-UDE, M10-1.5 M12-1.75 V2.11.17
34	PT1187034	LOCK WASHER 10MM
35	PT1187035	HEX NUT M10-1.5
36	PT1187036	KNOB M10-1.5, 28H 48D OVAL
37V2	PT1187037V2	TRIMMER ARM MOUNT V2.11.17
38V2	PT1187038V2	DIAGONAL SHEAR BLADE V2.11.17
39V2	PT1187039V2	FLAT SHEAR BLADE V2.11.17
40	PT1187040	BLADE MOUNTING BRACKET
41	PT1187041	CAP SCREW M10-1.5 X 25
42	PT1187042	LOCK WASHER 10MM
43	PT1187043	HEX NUT M10-1.5
44	PT1187044	CAP SCREW M10-1.5 X 20
45V2	PT1187045V2	TRIMMER ASSY BRACKET V2.11.17
46V2	PT1187046V2	DIAGONAL SHEAR PLATE V2.11.17
48	PT1187048	SHEAR SPRING
49V2	PT1187049V2	HEX NUT M5-.8
50V2	PT1187050V2	CAP SCREW M5-.8 X 8
51	PT1187051	GUIDE ROLLER 12 X 45
52	PT1187052	CAP SCREW M8-1.25 X 60
53	PT1187053	LOCK WASHER 8MM

REF	PART #	DESCRIPTION
54	PT1187054	HEX NUT M8-1.25
55V2	PT1187055V2	EDGE BAND GUIDE V2.11.17
56	PT1187056	GUIDE TORSION SPRING
57	PT1187057	HEX NUT M4-.7
58	PT1187058	FLAT HD SCREW M4-.7 X 10
59	PT1187059	EXTENSION SPRING
60V2	PT1187060V2	COIL MOUNT BRACKET (LT) V2.11.17
61V2	PT1187061V2	COIL MOUNT BRACKET (RT) V2.11.17
62V2	PT1187062V2	CAP SCREW M8-1.25 X 16
63	PT1187063	LOCK WASHER 8MM
64	PT1187064	FLAT WASHER 8MM
66V2	PT1187066V2	MOUNTING ARM V2.11.17
66A	PT1187066A	MOUNTING ARM ASSY
74V2	PT1187074V2	FENDER WASHER 6MM
75	PT1187075	CAM LOCK LEVER W/NUT
76V2	PT1187076V2	COIL SUPPORT LEG V2.11.17
77V2	PT1187077V2	BUTTON HD CAP SCR M8-1.25 X 70
78V2	PT1187078V2	FENDER WASHER 8MM
79V2	PT1187079V2	ADJ FOOT M12-1.75 X 50 V2.11.17
86	PT1187086	TAP SCREW M4 X 12
87	PT1187087	FLAT HD SCR M4-.7 X 10
88	PT1187088	HEX NUT M12-1.75
89	PT1187089	LOCK WASHER 12MM
90	PT1187090	FLAT WASHER 10MM
91	PT1187091	BUTTON HD CAP SCR M4-.7 X 8
92	PT1187092	FLAT HD SCR M4-.7 X 5
93	PT1187093	LOWER COIL SUPPORT ARM
94	PT1187094	UPPER COIL SUPPORT ARM
95	PT1187095	CAP SCREW M6-1 X 10
96	PT1187096	LOCK WASHER 6MM
97	PT1187097	FENDER WASHER 6MM
98	PT1187098	FLANGED BUSHING
99	PT1187099	PLASTIC END CAP
100	PT1187100	BUSHING
101	PT1187101	FLAT WASHER 12 X 28 X 4MM
102	PT1187102	COIL SUPPORT AXLE
103	PT1187103	FLAT WASHER 20MM
104	PT1187104	HEX NUT M20-2.5
105	PT1187105	FLAT HD SCR M5-.8 X 10
106	PT1187106	WING NUT M6-1
107	PT1187107	FENDER WASHER 6MM
108	PT1187108	BARRIER PLATE
109	PT1187109	CARRIAGE BOLT M6-1 X 12
110	PT1187110	TRIMMER MOUNTING PLATE
111	PT1187111	LARGE GASKET (RUBBER)
112	PT1187112	WORKPIECE SUPPORT (LARGE)
113	PT1187113	WORKPIECE SUPPORT (SMALL)
114	PT1187114	SMALL GASKET (RUBBER)
115	PT1187115	FLAT HD SCR M4-.7 X 15
116	PT1187116	BLADE WARNING LABEL
117	PT1187117	HEX NUT M12-1.75





Buy Direct and Save with Grizzly® – Trusted, Proven and a Great Value!
~Since 1983~

*Visit Our Website Today For
Current Specials!*

**ORDER
24 HOURS A DAY!
1-800-523-4777**

