



# MODEL T23100/T23123 8" & 12" PLATE SHEAR INSTRUCTIONS

## Inventory

Description	Qty
Plate Shear Assembly .....	1
Hex Bolts M10-1.5 x 40 Blk C8.8 (T23100) .....	2
Hex Bolts M12-1.75 x 40 Blk C8.8 (T23123) .....	2
Flat Washers 10mm (T23100) .....	2
Flat Washers 12mm (T23123) .....	2
Handle .....	1

## Shearing Capacities (Mild Steel)

MODEL	SIZE	MAX. SHEAR THICKNESS	MAX. ROD DIAMETERS*
T23100	8"	7 Gauge ( $\frac{3}{16}$ " )	$\frac{1}{2}$ "
T23123	12"	7 Gauge ( $\frac{3}{16}$ " )	$\frac{1}{2}$ "

\* Rebar/All Thread

**Important:** *DO NOT attempt to shear hardened or stainless steel blocks or rod. You will damage or break your shear blades!*

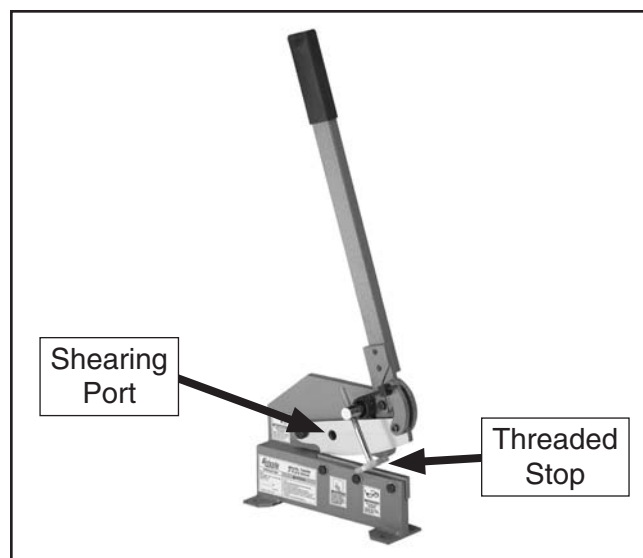
## Assembly & Mounting

1. Secure the handle to the plate shear assembly with the provided hex bolts and flat washers (use the parts diagram on the next page for reference).
2. Place the shear on the workbench, and use the holes in the base as a guide for drilling and attaching the shear to the workbench.

We recommend using through hex bolts that are secured through the workbench with flat washers and hex nuts. Otherwise, fasten lag bolts with flat washers directly into the workbench.

## **⚠ WARNING**

**The upper and lower blades are very sharp! Always keep body parts well away from the cutting area, or serious personal injury may result!**



**Figure 1.** Plate shear threaded stop.

## Basic Operation

1. If necessary, raise the threaded stop (see **Figure 1**) to allow room for the workpiece.
2. Place the workpiece between the blades or through the shearing port.  
  
—If shearing a flat workpiece, turn the stop so that the pad is firmly pressing the workpiece against the lower blade.
3. With slow and even pressure, pull the handle down to cut the workpiece.

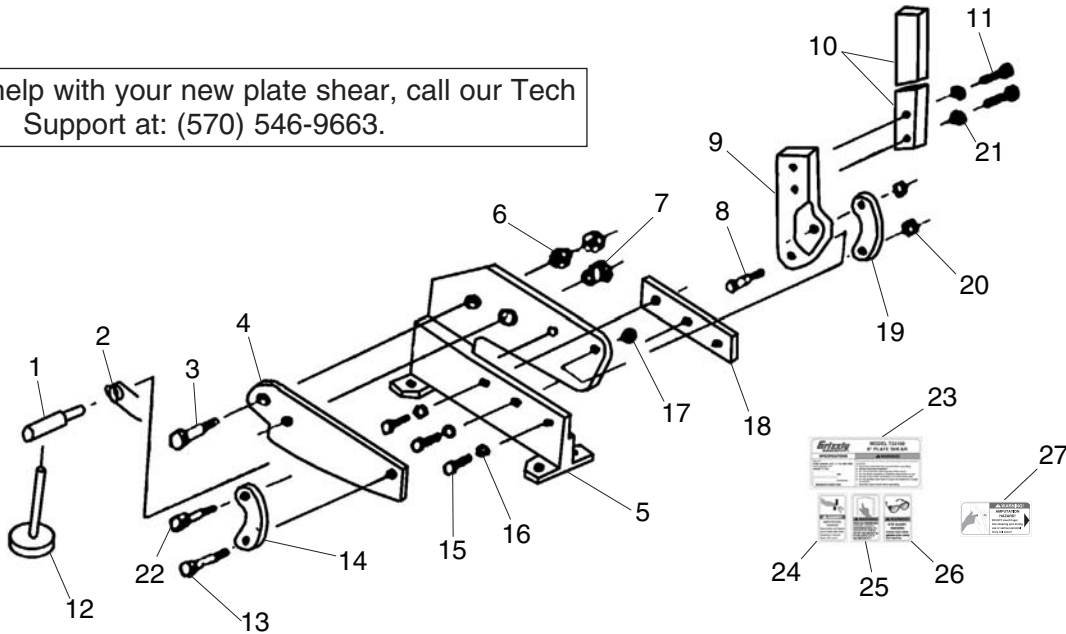
**Note:** *If the material seems too thick or too hard, do not force the shear! Instead, use a metal-cutting bandsaw to cut the workpiece.*

## Maintenance

- Always keep the blades lubricated with a light oil.
- Keep the pivot points tight.
- Check all shear hardware before every use for loose or worn components.

# Parts Breakdown & Lists

If you need help with your new plate shear, call our Tech Support at: (570) 546-9663.



## T23100 Parts List

REF	PART #	DESCRIPTION
1	PT23100001	SPRING SUPPORT ROD
2	PT23100002	TORSION SPRING
3	PB179M	HEX BOLT M14-1.5 X 40
4	PT23100004	UPPER BLADE 8"
5	PT23100005	SHEAR BODY
6	PN42M	HEX NUT M14-1.5
7	PT23100007	BLADE ALIGNMENT PIN
8	PB73M	HEX BOLT M10-1.5 X 50
9	PT23100009	HANDLE BRACKET
10	PT23100010	HANDLE
11	PB180M	HEX BOLT M10-1.5 X 40 BLK C8.8
12	PT23100012	THREADED STOP M12-1.75 X 165
13	PB126M	HEX BOLT M8-1.25 X 40
14	PT23100014	FRONT PIVOT ARM
15	PB74M	HEX BOLT M10-1.5 X 20
16	PW04M	FLAT WASHER 10MM
17	PN02M	HEX NUT M10-1.5
18	PT23100018	LOWER BLADE 8"
19	PT23100019	REAR PIVOT ARM
20	PN15M	HEX NUT M18-1.5
21	PW04M	FLAT WASHER 10MM
22	PT23100022	THREADED ROD M8-1.25 X 40
23	PT23100023	MACHINE ID LABEL
24	PLABEL-71A	AMPUTATION HAZARD LABEL
25	PLABEL-12C	READ MANUAL LABEL
26	PLABEL-11B	EYE INJURY HAZARD LABEL
27	PT23100027	SHEAR PORT HAZARD LABEL

## T23123 Parts List

REF	PART #	DESCRIPTION
1	PT23123001	SPRING SUPPORT ROD
2	PT23123002	TORSION SPRING
3	PB181M	HEX BOLT M18-1.5 x 50
4	PT23123004	UPPER BLADE 12"
5	PT23123005	SHEAR BODY
6	PN15M	HEX NUT M18-1.5
7	PT23123007	BLADE ALIGNMENT PIN
8	PB182M	HEX BOLT M14-1.5 X 60
9	PT23123009	HANDLE BRACKET
10	PT23123010	HANDLE
11	PB183M	HEX BOLT M12-1.75 X 40 BLK C8.8
12	PT23100012	THREADED STOP M12-1.75 X 165
13	PB182M	HEX BOLT M14-1.5 X 60
14	PT23123014	FRONT PIVOT ARM
15	PB49M	HEX BOLT M12-1.75 X 20
16	PW06M	FLAT WASHER 12MM
17	PN42M	HEX NUT M14-1.5
18	PT23123018	LOWER BLADE 12"
19	PT23123019	REAR PIVOT ARM
20	PN42M	HEX NUT M14-1.5
21	PW06M	FLAT WASHER 12MM
22	PT23123022	THREADED ROD M14-1.5 x 60
23	PT23123023	MACHINE ID LABEL
24	PLABEL-71A	AMPUTATION HAZARD LABEL
25	PLABEL-12C	READ MANUAL LABEL
26	PLABEL-11B	EYE INJURY HAZARD LABEL
27	PT23100027	SHEAR PORT HAZARD LABEL

COPYRIGHT © AUGUST, 2010 BY GRIZZLY INDUSTRIAL, INC.

**WARNING: NO PORTION OF THIS MANUAL MAY BE REPRODUCED IN ANY SHAPE OR FORM WITHOUT THE WRITTEN APPROVAL OF GRIZZLY INDUSTRIAL, INC.**

#TS13113 PRINTED IN CHINA