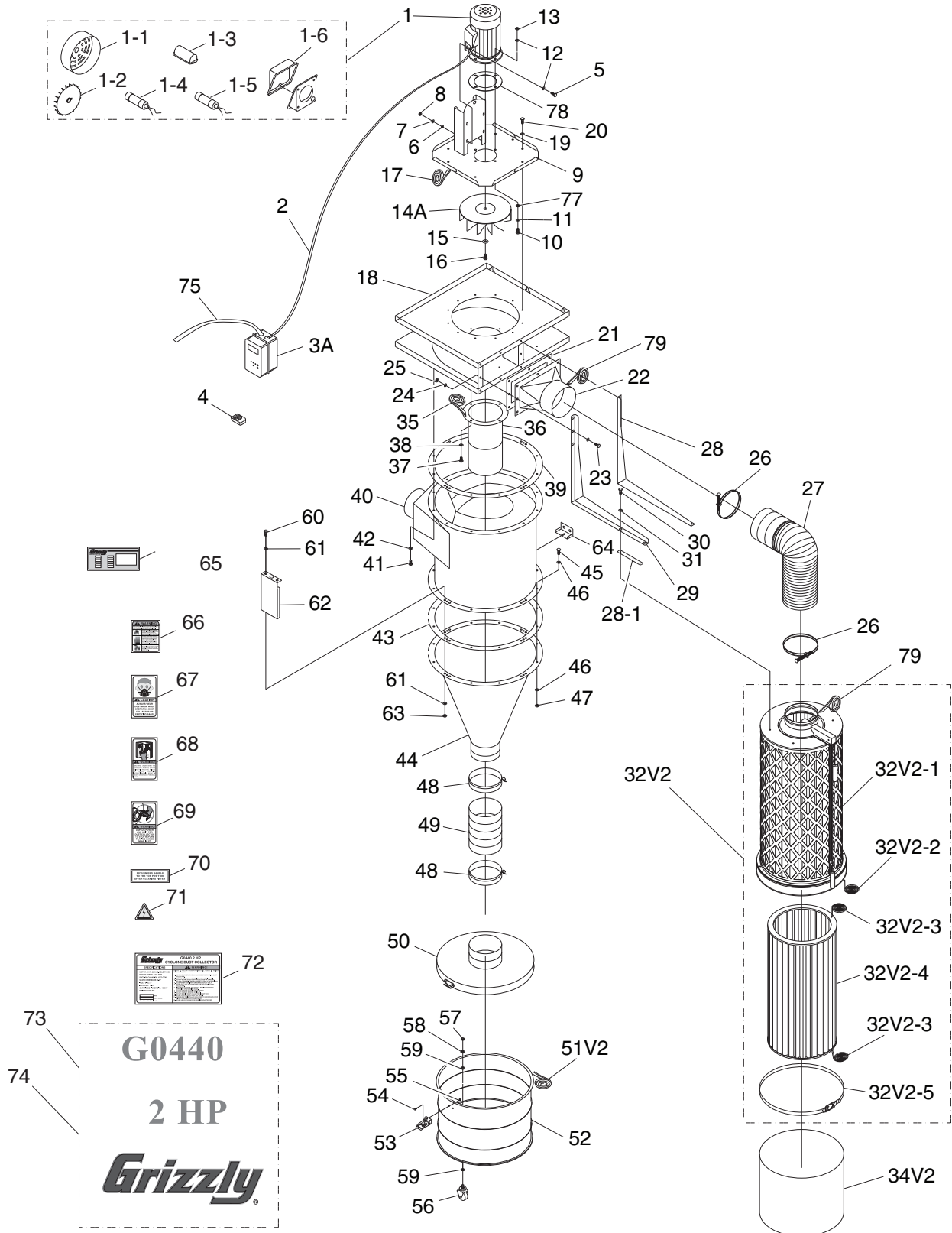


SECTION 9: PARTS

G0440 Breakdown



G0440 Parts List

REF	PART #	DESCRIPTION
1	P0440001	MOTOR 2HP 1PH 220V
1-1	P0440001-1	MOTOR FAN COVER
1-2	P0440001-2	MOTOR FAN
1-3	P0440001-3	CAPACITOR COVER
1-4	PC300B	S CAP. 300MFD 125V 1-3/4 X 3-3/8
1-5	PC050A	R CAP. 50MFD 250V 1-5/8 X 3-1/2
1-6	P0440001-6	JUNCTION BOX
2	P0440002	WIRE 14AWG X 3C
3A	P0440003A	REMOTE MAG SWITCH 220V V2.02.06
4	P0440004	REMOTE CONTROLLER
5	PB16	HEX BOLT 3/8-16 X 1-1/2
6	PW02	FLAT WASHER 3/8
7	PLW04	LOCK WASHER 3/8
8	PN08	HEX NUT 3/8"-16
9	P0440009	BLOWER COVER
10	PB18	HEX BOLT 3/8-16 X 1
11	PW02	FLAT WASHER 3/8
12	PLW04	LOCK WASHER 3/8
13	PN08	HEX NUT 3/8"-16
14A	P0440014A	IMPELLER 14-1/2" V2.02.06
15	P0440015	IMPELLER FENDER WASHER 3/8
16	PB103	IMPELLER BOLT 3/8-16 x 1 LH
17	P0440017	FOAM TAPE 3 X 6MM X 1.8M
18	P0440018	BLOWER HOUSING
19	PW07	FLAT WASHER 5/16
20	PB07	HEX BOLT 5/16-18 X 3/4
21	P0440021	OUTLET GASKET 306 X 226MM
22	P0440022	OUTLET PORT
23	PB03	HEX BOLT 5/16-18 X 1
24	PW07	FLAT WASHER 5/16
25	PN02	HEX NUT 5/16"-18
26	P0440026	HOSE CLAMP 7"
27	P0440027	GRAY FLEX PIPE 7" X 800MM
28	P0440028	LEFT FILTER L-BRACE
28-1	P0440028-1	BRACE GASKET 155 X 37MM
29	P0440029	RIGHT FILTER L-BRACE
30	PB07	HEX BOLT 5/16-18 X 3/4
31	PW07	FLAT WASHER 5/16
32V2	P0440032V2	CANISTER FILTER ASSEMBLY V2.11.09
32V2-1	P0440032V2-1	CANISTER FILTER CAGE ASSY V2.11.09
32V2-2	P0440032V2-2	FOAM TAPE 3 X 25 X 1400MM V2.11.09
32V2-3	P0440032V2-3	FOAM TAPE 3 X 35 X 1255MM V2.11.09
32V2-4	P0440032V2-4	CANISTER FILTER 386MM V2.11.09
32V2-5	P0440032V2-5	BAG CLAMP 445MM V2.11.09
34V2	P0440034V2	PLASTIC BAG 470 X 600MM V2.11.09

REF	PART #	DESCRIPTION
35	P0440017	FOAM TAPE 3 X 6MM X 1.8M
36	P0440036	INTAKE CYLINDER 10"
37	PW07	FLAT WASHER 5/16
38	PB07	HEX BOLT 5/16-18 X 3/4
39	P0440039	BARREL GASKET 584MM DIA.
40	P0440040	INTAKE BARREL 20"
41	PB07	HEX BOLT 5/16-18 X 3/4
42	PW07	FLAT WASHER 5/16
43	P0440039	BARREL GASKET 584MM DIA.
44	P0440044	CYCLONE FUNNEL 20"
45	PB03	HEX BOLT 5/16-18 X 1
46	PW07	FLAT WASHER 5/16
47	PN02	HEX NUT 5/16"-18
48	P0440048	HOSE CLAMP 9"
49	P0440049	CLEAR FLEX PIPE 9" x 200MM
50	P0440050	COLLECTION DRUM LID V2.08.06
51V2	P0440051V2	DRUM SEAL 2.1M V2.11.09
52	P0440052	COLLECTION DRUM 35GAL
53	P0440053	DRUM LID LATCH ASSEMBLY
54	PS06	PHLP HD SCR 10-24 X 3/8
55	PN07	HEX NUT 10-24
56	P0440056	CASTER 2"
57	PN08	HEX NUT 3/8"-16
58	PLW04	LOCK WASHER 3/8
59	PW02	FLAT WASHER 3/8
60	PB03	HEX BOLT 5/16-18 X 1
61	PW07	FLAT WASHER 5/16
62	P0443061	SWITCH MOUNTING BRACKET
63	PN02	HEX NUT 5/16"-18
64	P0440064	WALL MOUNTING BRACE
65	P0440065	MOTOR SPEC LABEL
66	P0442093	MOTOR WARNING LABEL
67	PLABEL-32	DUST MASK 2W X 3.3H
68	PLABEL-12	READ MANUAL 2W X 3.3H
69	P0442096	HANDS/INLET LABEL
70	P0442097	RETURN RED HANDLE LABEL
71	PLABEL-14	ELECTRICITY 1.4W X 1.2H
72	P0440072	MACHINE ID LABEL
73	P0440073	MODEL NO/HP/GRIZZLY LABEL LRG
74	P0440074	MODEL NO/HP/GRIZZLY LABEL SML
75	P0440075	POWER CORD 12AWG X 3C X 10'
77	PTLW03	EXT TOOTH WASHER 5/16
78	P0440078	MOTOR MOUNT GASKET
79	P0440079	FOAM TAPE 3 X 15 X 750MM

