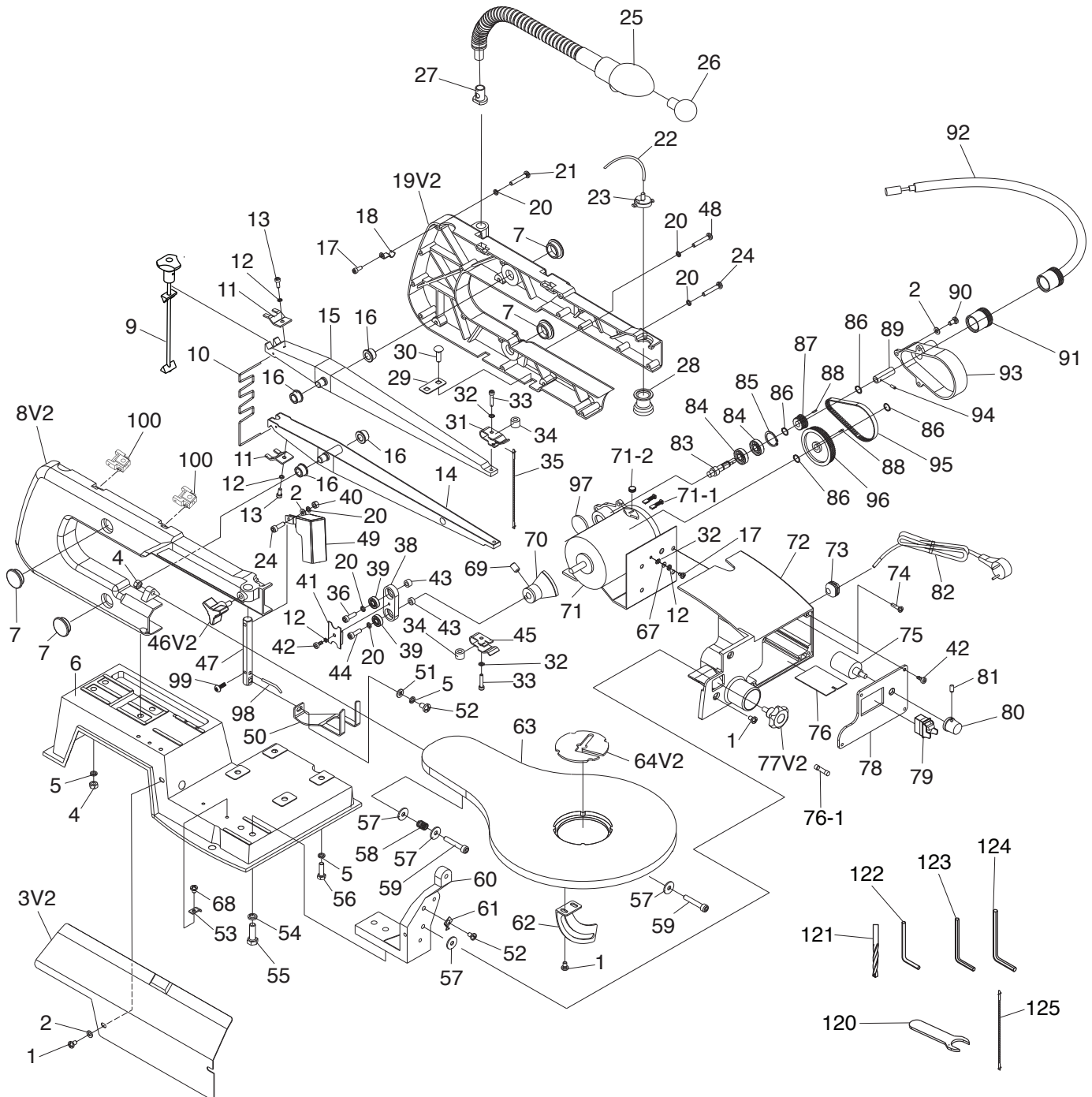


SECTION 8: PARTS

We do our best to stock replacement parts when possible, but we cannot guarantee that all parts shown are available for purchase. Call **(800) 523-4777** or visit **www.grizzly.com/parts** to check for availability.

Main



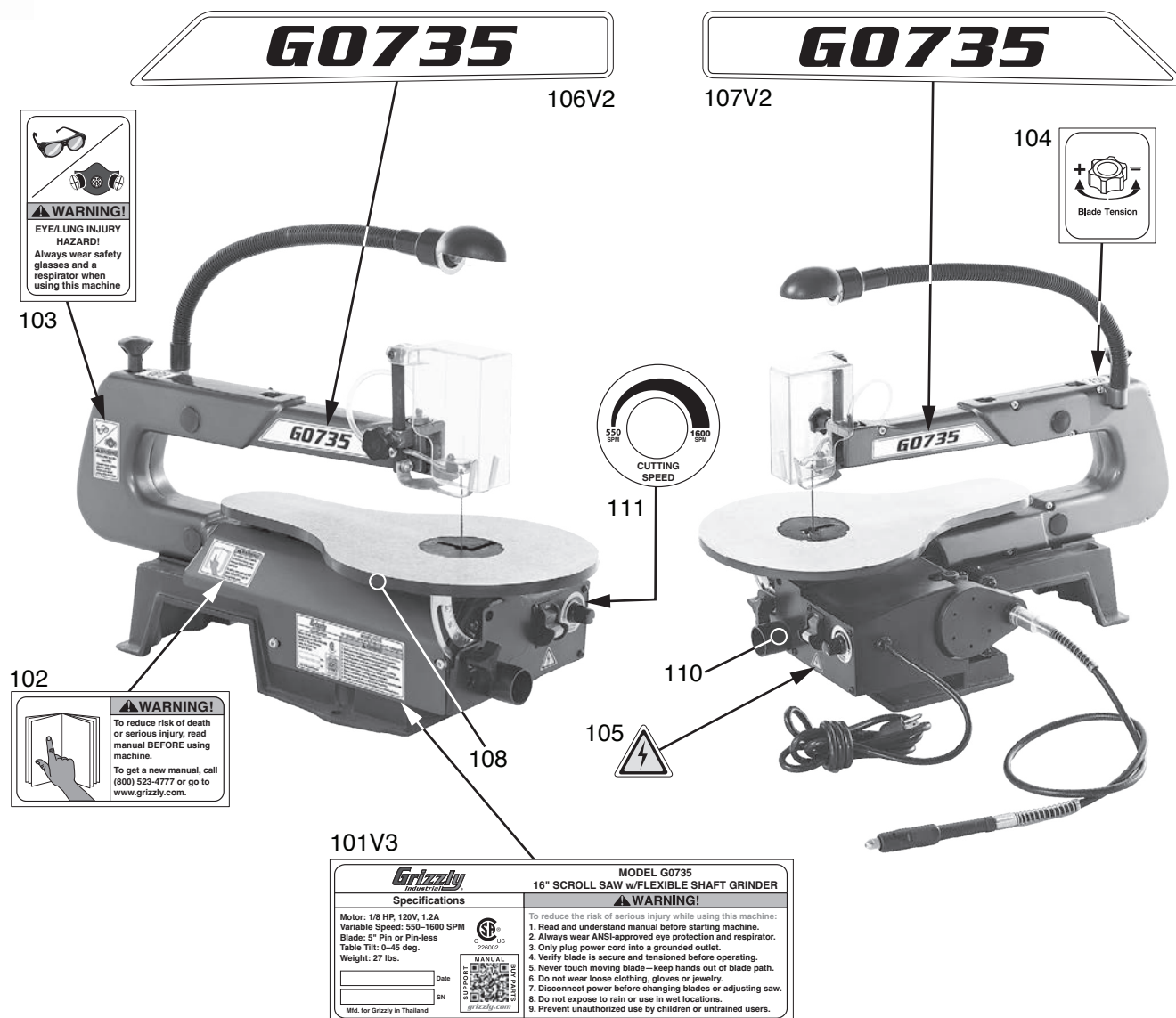
Main Parts List

| REF | PART # | DESCRIPTION |
|------|------------|----------------------------------|
| 1 | P0735001 | PHLP HD SCR M5-.8 X 8 |
| 2 | P0735002 | FLAT WASHER 5MM |
| 3V2 | P0735003V2 | SIDE COVER V2.09.25 |
| 4 | P0735004 | HEX NUT M6-1 |
| 5 | P0735005 | LOCK WASHER 6MM |
| 6 | P0735006 | BASE |
| 7 | P0735007 | DUST CAP |
| 8V2 | P0735008V2 | LEFT ARM HOUSING v2.09.25 |
| 9 | P0735009 | TENSION BOLT ASSY |
| 10 | P0735010 | ARM SPRING |
| 11 | P0735011 | PRESSURE PLATE |
| 12 | P0735012 | LOCK WASHER 4MM |
| 13 | P0735013 | PHLP HD SCR M4-.7 X 10 |
| 14 | P0735014 | LOWER ARM |
| 15 | P0735015 | UPPER ARM |
| 16 | P0735016 | OIL SLEEVE BEARING |
| 17 | P0735017 | PHLP HD SCR M4-.7 X 6 |
| 18 | P0735018 | WIRE CLIP |
| 19V2 | P0735019V2 | RIGHT ARM HOUSING v2.09.25 |
| 20 | P0735020 | LOCK WASHER 5MM |
| 21 | P0735021 | PHLP HD SCR M5-.8 X 35 |
| 22 | P0735022 | AIR HOSE 6 X 165MM CLEAR |
| 23 | P0735023 | BELLOWS CAP |
| 24 | P0735024 | PHLP HD SCR M5-.8 X 25 |
| 25 | P0735025 | LAMP 120V 10W |
| 26 | P0735026 | BULB 120V 10W BA15S INC |
| 27 | P0735027 | LAMP MOUNTING POST |
| 28 | P0735028 | BELLOWS |
| 29 | P0735029 | MOUNTING PLATE |
| 30 | P0735030 | CARRIAGE BOLT M6-1 X 20 |
| 31 | P0735031 | UPPER BLADE SUPPORT |
| 32 | P0735032 | EXT TOOTH WASHER 4MM |
| 33 | P0735033 | CAP SCREW M4-.7 X 20 |
| 34 | P0735034 | SUPPORT SPACER |
| 35 | P0735035 | BLADE |
| 36 | P0735036 | CAP SCREW M5-.8 X 25 |
| 37 | P0735037 | BIG SPACER |
| 38 | P0735038 | ECCENTRIC CONNECTOR |
| 39 | P0735039 | BALL BEARING 625ZZ |
| 40 | P0735040 | HEX NUT M5-.8 |
| 41 | P0735041 | ECCENTRIC CONNECTOR PLATE |
| 42 | P0735042 | TAP SCREW M4 X 10 |
| 43 | P0735043 | SMALL SPACER |
| 44 | P0735044 | CAP SCREW M5-.8 X 16 |
| 45 | P0735045 | LOWER BLADE SUPPORT |
| 46V2 | P0735046V2 | STAR KNOB M6-1 X 12 6PT V2.09.25 |
| 47 | P0735047 | DROP FOOT GUIDE POST |
| 48 | P0735048 | PHLP HD SCR M5-.8 X 30 |
| 49 | P0735049 | BLADE GUARD |
| 50 | P0735050 | DROP FOOT |
| 51 | P0735051 | FLAT WASHER 6MM |
| 52 | P0735052 | PHLP HD SCR M6-1 X 10 |
| 53 | P0735053 | CORD CLAMP PLATE |

| REF | PART # | DESCRIPTION |
|------|------------|----------------------------------|
| 54 | P0735054 | LOCK WASHER 8MM |
| 55 | P0735055 | CAP SCREW M8-1.25 X 25 |
| 56 | P0735056 | HEX BOLT M6-1 X 20 |
| 57 | P0735057 | D-SHAPED FLAT WASHER 6MM |
| 58 | P0735058 | COMPRESSION SPRING |
| 59 | P0735059 | CAP SCREW M6-1 X 35 |
| 60 | P0735060 | TABLE MOUNTING BRACKET |
| 61 | P0735061 | POINTER |
| 62 | P0735062 | SCALE |
| 63 | P0735063 | TABLE |
| 64V2 | P0735064V2 | TABLE INSERT V2.09.25 |
| 67 | P0735067 | FLAT WASHER 4MM |
| 68 | P0735068 | PHLP HD SCR M4-.7 X 8 |
| 69 | P0735069 | SET SCREW M8-1.25 X 12 |
| 70 | P0735070 | ECCENTRIC COUNTERWEIGHT |
| 71 | P0735071 | MOTOR DC W/ROTARY DRIVE |
| 71-1 | P0735071-1 | MOTOR CARBON BRUSHES 2-PC |
| 71-2 | P0735071-2 | MOTOR BRUSH CAP |
| 72 | P0735072 | FRONT HOUSING |
| 73 | P0735073 | STRAIN RELIEF 8MM SNAP-IN |
| 74 | P0735074 | PHLP HD SCR M4-.7 X 10 |
| 75 | P0735075 | POTENTIOMETER C104 |
| 76 | P0735076 | CIRCUIT BOARD |
| 76-1 | P0735076-1 | FUSE F5A250V GLASS |
| 77V2 | P0735077V2 | STAR KNOB M6-1 X 14 3PT V2.09.25 |
| 78 | P0735078 | SWITCH COVER |
| 79 | P0735079 | TOGGLE SAFETY SWITCH |
| 80 | P0735080 | VARIABLE SPEED KNOB |
| 81 | P0735081 | CAP SCREW M5-.8 X 6 |
| 82 | P0735082 | POWER CORD 18/3-AWG SJT 5-15 |
| 83 | P0735083 | SHAFT |
| 84 | P0735084 | BALL BEARING 608Z |
| 85 | P0735085 | EXT RETAINING RING 22MM |
| 86 | P0735086 | E-CLIP 8MM |
| 87 | P0735087 | SMALL PULLEY |
| 88 | P0735088 | SOLID PIN 3 X 8 |
| 89 | P0735089 | COUPLING |
| 90 | P0735090 | PHLP HD SCR M5-.8 X 12 |
| 91 | P0735091 | SHAFT GUARD |
| 92 | P0735092 | FLEXIBLE SHAFT |
| 93 | P0735093 | PULLEY COVER |
| 94 | P0735094 | ROLL PIN 3 X 8 |
| 95 | P0735095 | TIMING BELT 74XXL 4.3MM |
| 96 | P0735096 | LARGE PULLEY |
| 97 | P0735097 | DUST COVER |
| 98 | P0735098 | AIR NOZZLE |
| 99 | P0735099 | PHLP HD SCR M5-.8 X 6 |
| 100 | P0735100 | PLAIN-END BLADE ADAPTER 2PC |
| 120 | P0735120 | COLLET CHUCK WRENCH |
| 121 | P0735121 | DRILL BIT 1/8" |
| 122 | P0735122 | L-WRENCH |
| 123 | P0735123 | HEX WRENCH 2.5MM |
| 124 | P0735124 | HEX WRENCH 3MM |



Labels & Cosmetics



| REF | PART # | DESCRIPTION |
|-------|------------|---------------------------|
| 101V3 | P0735101V3 | MACHINE ID LABEL V3.09.25 |
| 102 | P0735102 | READ MANUAL LABEL |
| 103 | P0735103 | GLASSES RESPIRATOR LABEL |
| 104 | P0735104 | TENSION KNOB ADJ LABEL |
| 105 | P0735105 | ELECTRICITY LABEL |

| REF | PART # | DESCRIPTION |
|-------|------------|-------------------------------|
| 106V2 | P0735106V2 | MODEL LABEL, LEFT V2.09.25 |
| 107V2 | P0735107V2 | MODEL LABEL, RIGHT V2.09.25 |
| 108 | P0735108 | TOUCH-UP PAINT, GRIZZLY GREEN |
| 110 | P0735110 | TOUCH-UP PAINT, BLACK |
| 111 | P0735111 | VARIABLE SPEED LABEL |

! WARNING

Safety labels help reduce the risk of serious injury caused by machine hazards. If any label comes off or becomes unreadable, the owner of this machine **MUST** replace it in the original location before resuming operations. For replacements, contact (800) 523-4777 or www.grizzly.com.

