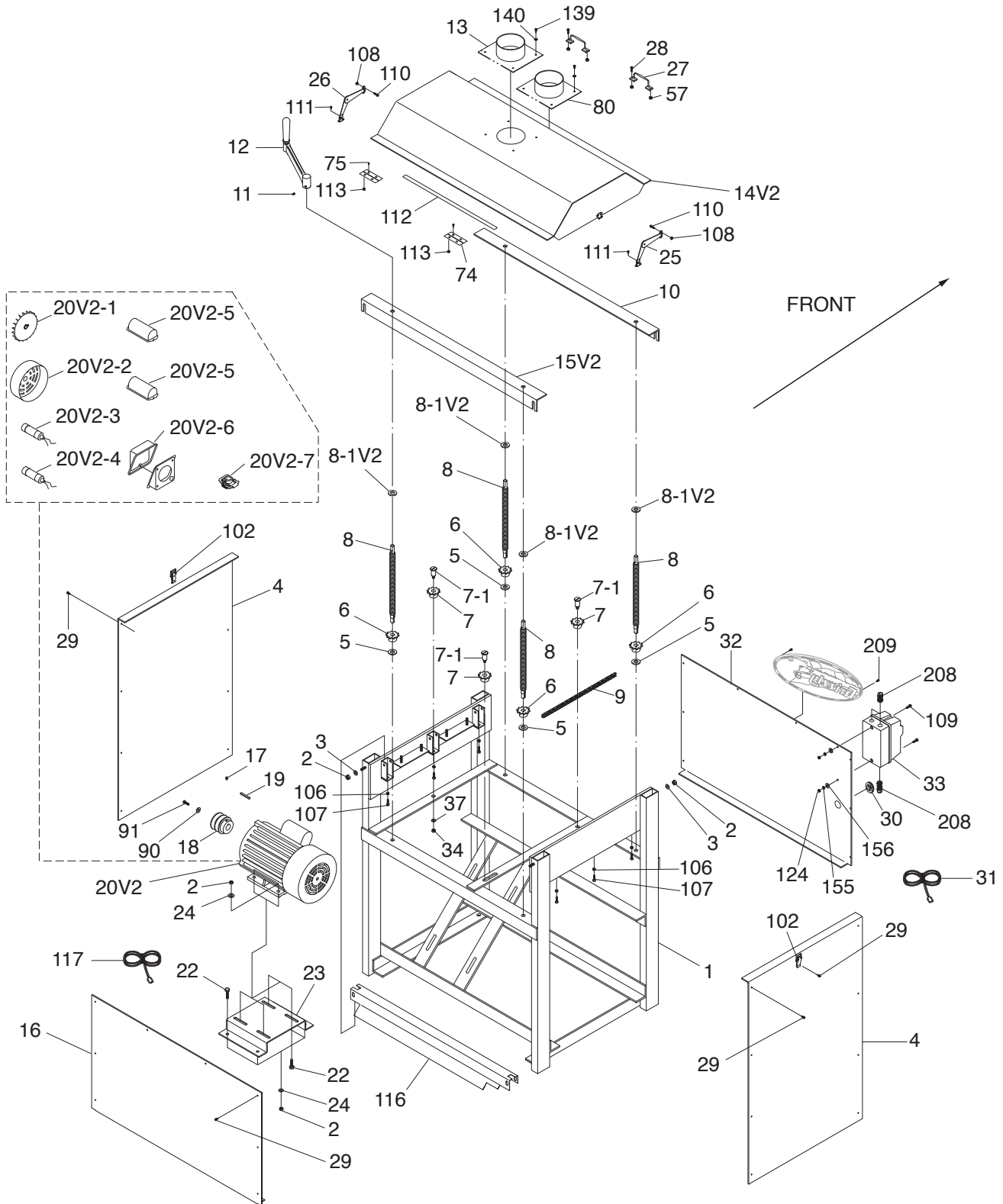
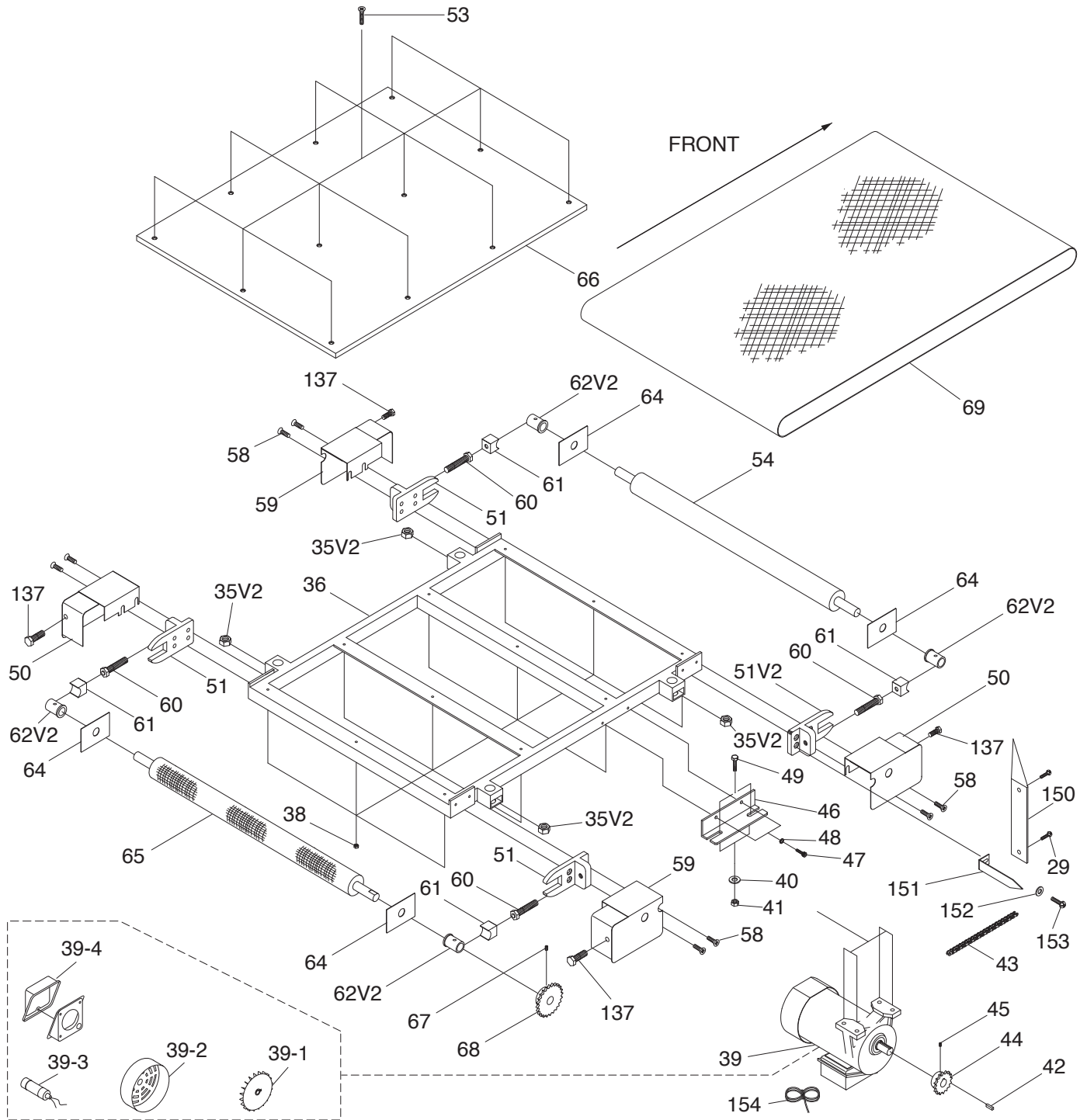


SECTION 9: PARTS

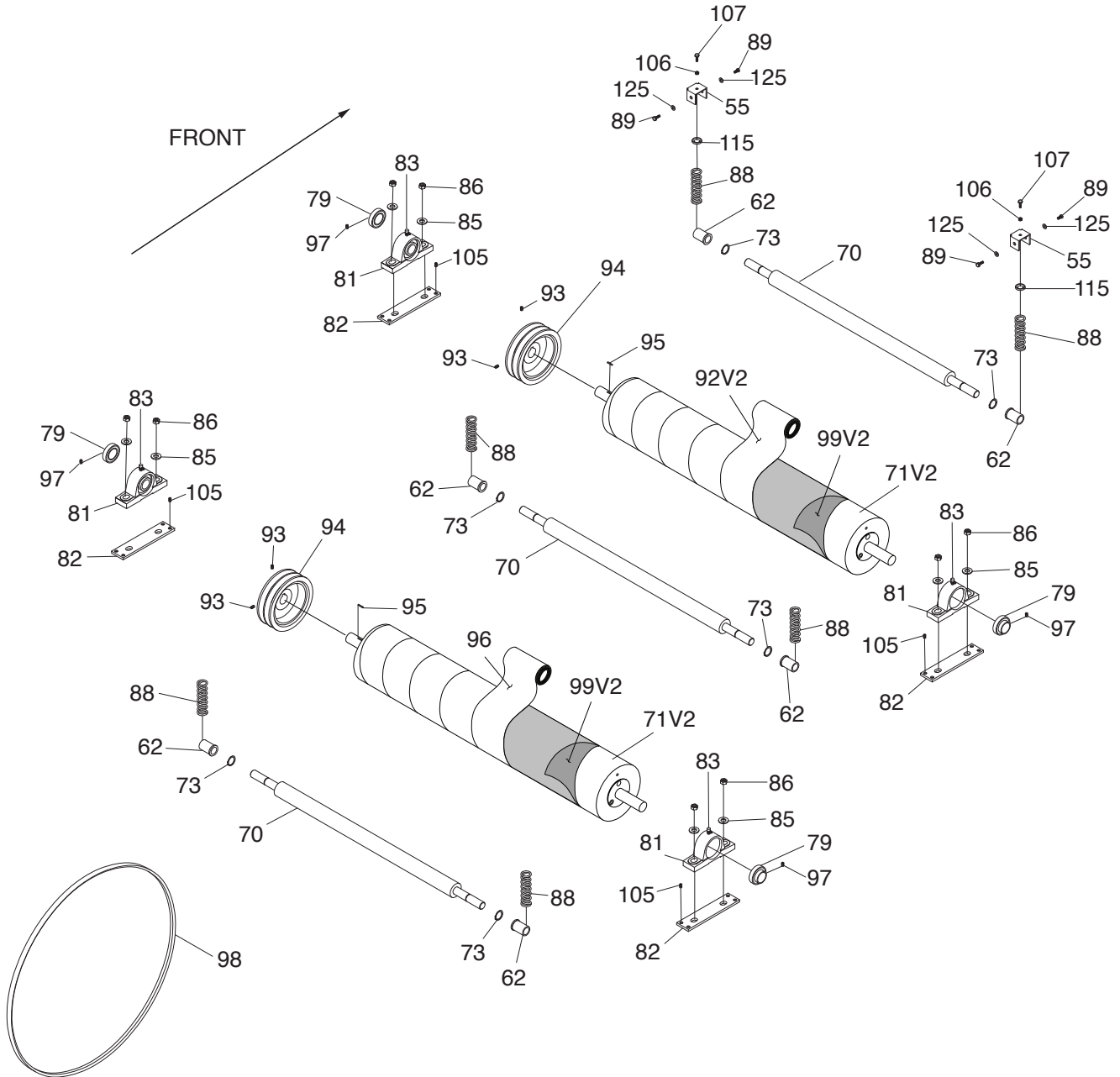
G1066R Stand & Motor



G1066R Conveyor Belt & Table



G1066R Drums & Rollers



G1066R Parts List

| REF | PART # | DESCRIPTION |
|--------|---------------|-------------------------------------|
| 1 | P1066R001 | FRAME |
| 2 | P1066R002 | HEX NUT 3/8-16 |
| 3 | P1066R003 | FLAT WASHER 3/8 |
| 4 | P1066R004 | SIDE PANEL |
| 5 | P1066R005 | BUSHING |
| 6 | P1066R006 | SPROCKET |
| 7 | P1066R007 | SPROCKET |
| 7-1 | P1066R007-1 | SHAFT |
| 8 | P1066R008 | TABLE SCREW FINE THREADS 3/4-16 |
| 8-1V2 | P1066R008-1V2 | FLAT WASHER 13 X 26.5 X 2 V2.04.25 |
| 9 | P1066R009 | CHAIN |
| 10 | P1066R010 | FRONT BRACE |
| 11 | P1066R011 | SET SCREW 5/16-24 X 3/8 |
| 12 | P1066R012 | COMPLETE CRANK HANDLE ASSY |
| 13 | P1066R013 | DUST PORT TOP |
| 14V2 | P1066R014V2 | HOOD V2.02.24 |
| 15V2 | P1066R015V2 | REAR BRACE V2.02.24 |
| 16 | P1066R016 | REAR PANEL |
| 17 | P1066R017 | SET SCREW 1/4-20 X 1/2 |
| 18 | P1066R018 | MOTOR PULLEY |
| 19 | P1066R019 | KEY 1/4 X 1/4 X 3 |
| 20V2 | P1066R020V2 | DRUM MOTOR 5HP 220V 1-PH V2.02.24 |
| 20V2-1 | P1066R020V2-1 | MOTOR FAN |
| 20V2-2 | P1066R020V2-2 | MOTOR FAN COVER |
| 20V2-3 | P1066R020V2-3 | S CAPACITOR 600M 125V 1-3/4 X 3-3/8 |
| 20V2-4 | P1066R020V2-4 | R CAPACITOR 50M 350V 1-3/4 X 3-3/8 |
| 20V2-5 | P1066R020V2-5 | CAPACITOR COVER |
| 20V2-6 | P1066R020V2-6 | JUNCTION BOX |
| 20V2-7 | P1066R020V2-7 | CENTRIFUGAL SWITCH |
| 22 | P1066R022 | HEX BOLT 3/8-16 X 1 |
| 23 | P1066R023 | BRACKET |
| 24 | P1066R024 | FLAT WASHER 3/8 |
| 25 | P1066R025 | SUPPORT ARM LEFT |
| 26 | P1066R026 | SUPPORT ARM RIGHT |
| 27 | P1066R027 | HANDLE |
| 28 | P1066R028 | CAP SCREW 5/16-18 X 5/8 |
| 29 | P1066R029 | TAP SCREW #6 X 1/2 |
| 30 | P1066R030 | GROMMET 35 X 26MM |
| 31 | P1066R031 | POWER CORD 12G 3W 72" |
| 32 | P1066R032 | FRONT PANEL |
| 33 | P1066R033 | 5 HP MAGNETIC SWITCH SINGLE-PHASE |
| 34 | P1066R034 | HEX NUT 5/16-18 |
| 35V2 | P1066R035V2 | HEX NUT 3/4-16 1-1/4" DIA V2.08.02 |
| 36 | P1066R036 | TABLE FRAME |
| 37 | P1066R037 | FLAT WASHER 5/16 |
| 38 | P1066R038 | LOCK NUT 1/4-20 |
| 39 | P1066R039 | FEED MOTOR 1/4HP 220V 1-PH |
| 39-1 | P1066R039-1 | MOTOR FAN |
| 39-2 | P1066R039-2 | MOTOR FAN COVER |
| 39-3 | P1066R039-3 | R CAPACITOR 12M 350V 1-3/8 X 2 |
| 39-4 | P1066R039-4 | JUNCTION BOX |
| 40 | P1066R040 | FLAT WASHER 5/16 |
| 41 | P1066R041 | HEX NUT 5/16-18 |
| 42 | P1066R042 | KEY 5 X 5 X 20 |
| 43 | P1066R043 | CHAIN |
| 44 | P1066R044 | SPROCKET |

| REF | PART # | DESCRIPTION |
|------|-------------|--|
| 45 | P1066R045 | SET SCREW 1/4-20 X 1/4 |
| 46 | P1066R046 | MOTOR BRACKET |
| 47 | P1066R047 | CAP SCREW 3/8-16 X 3/4 |
| 48 | P1066R048 | FLAT WASHER 1/4 |
| 49 | P1066R049 | HEX BOLT 5/16-18 X 1 |
| 50 | P1066R050 | GUARD HINGED LEFT |
| 51 | P1066R051 | ROLLER BRACKET |
| 51V2 | P1066R051V2 | ROLLER BRACKET V2.02.11 |
| 53 | P1066R053 | FLAT HD SCR 1/4-20 X 2-3/8 |
| 54 | P1066R054 | IDLE ROLLER SMOOTH 24 IN |
| 55 | P1066R055 | BRACKET |
| 57 | P1066R057 | HEX NUT 5/16-18 |
| 58 | P1066R058 | CAP SCREW 1/4-20 X 3/4 |
| 59 | P1066R059 | GUARD RIGHT |
| 60 | P1066R060 | ROLLER BRACKET BOLT 1/2-13 X 70 |
| 61 | P1066R061 | BUSHING SUPPORT |
| 62 | P1066R062 | BUSHING V1 |
| 62V2 | P1066R062V2 | BUSHING V2.02.24 |
| 64 | P1066R064 | PLATE |
| 65 | P1066R065 | DRIVE ROLLER KNURLED 24 IN |
| 66 | P1066R066 | TABLE 12 HOLE |
| 67 | P1066R067 | SET SCREW 1/4-20 X 1/2 |
| 68 | P1066R068 | SPROCKET 24T |
| 69 | P1066R069 | RUBBER CONVEYOR BELT |
| 70 | P1066R070 | PRESSURE ROLLER |
| 71V2 | P1066R071V2 | SANDING DRUM V2.02.24 |
| 73 | P1066R073 | EXT RETAINING RING 19MM |
| 74 | P1066R074 | HINGE |
| 75 | P1066R075 | PHLP HD SCR 5/32-32 X 1/2 |
| 79 | P1066R079 | PILLOW BLOCK BEARING UCP205 |
| 80 | P1066R080 | DUST PORT FRONT |
| 81 | P1066R081 | BEARING BLOCK |
| 82 | P1066R082 | BEARING BLOCK PLATE, TAPPED |
| 83 | P1066R083 | GREASE FITTING M6-1 X 5 |
| 85 | P1066R085 | FLAT WASHER 3/8 |
| 86 | P1066R086 | LOCK NUT 3/8-16 |
| 88 | P1066R088 | COMPRESSION SPRING |
| 89 | P1066R089 | HEX BOLT M6-1 X 8 |
| 90 | P1066R090 | FLAT WASHER 3/8 |
| 91 | P1066R091 | HEX BOLT M8-1.25 X 24 |
| 92V2 | P1066R092V2 | SANDING ROLL 3" x 50' A60 H&L V2.02.24 |
| 93 | P1066R093 | SET SCREW 1/4-20 X 1/2 |
| 94 | P1066R094 | DRUM PULLEY |
| 95 | P1066R095 | KEY 6 X 6 X 30 |
| 96 | P1066R096 | SANDING ROLL 3" x 50' A100 H&L |
| 97 | P1066R097 | SET SCREW M6-1 X 8 |
| 98 | P1066R098 | V-BELT B67 |
| 99V2 | P1066R099V2 | HOOK-AND-LOOP DRUM COVER V2.02.24 |
| 102 | P1066R102 | LATCH |
| 105 | P1066R105 | SET SCREW 5/16-24 X 5/8 |
| 106 | P1066R106 | HEX NUT 1/4-20 |
| 107 | P1066R107 | HEX BOLT 1/4-20 X 1/2 |
| 108 | P1066R108 | HEX NUT M4-.7 |
| 109 | P1066R109 | PHLP HD SCR 10-24 X 5/8 |
| 110 | P1066R110 | PHLP HD SCR M4-.7 X 6 |
| 111 | P1066R111 | TAP SCREW #8 X 3/8 |



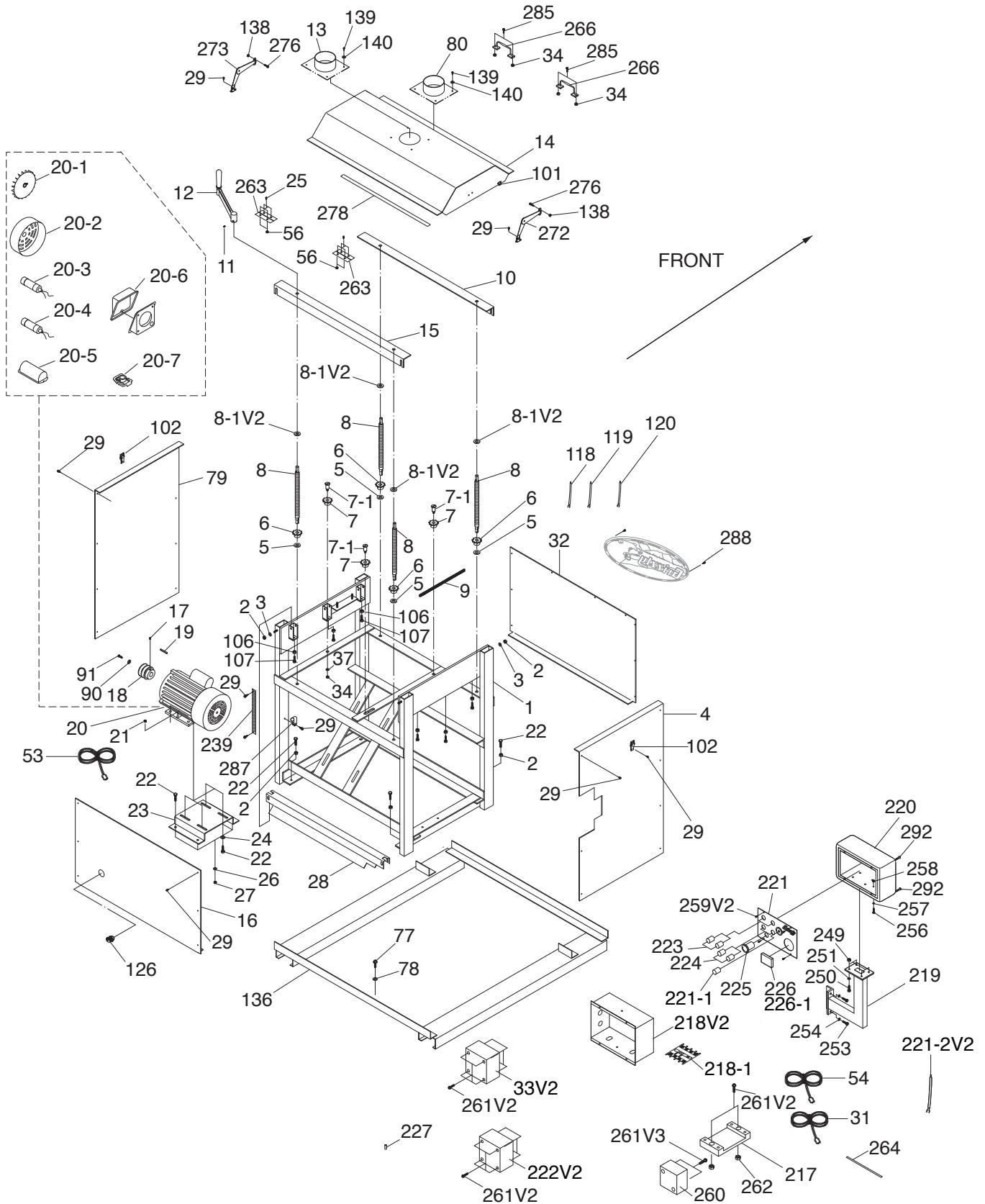
G1066R Parts List (Cont.)

| REF | PART # | DESCRIPTION |
|-----|-----------|-----------------------------------|
| 112 | P1066R112 | SELF ADHESIVE FOAM 2 X 15 X 600MM |
| 113 | P1066R113 | LOCK NUT 5/32-32 |
| 115 | P1066R115 | SPRING PLATE |
| 116 | P1066R116 | DUST SCOOP DEFLECTOR |
| 117 | P1066R117 | MOTOR CORD 12G 3W 36" |
| 124 | P1066R124 | HEX NUT 10-24 |
| 125 | P1066R125 | FLAT WASHER 1/4 |
| 137 | P1066R137 | PHLP HD SCR 10-24 X 3/8 |
| 139 | P1066R139 | TAP SCREW #8 X 1/2 |
| 140 | P1066R140 | FLAT WASHER #10 |

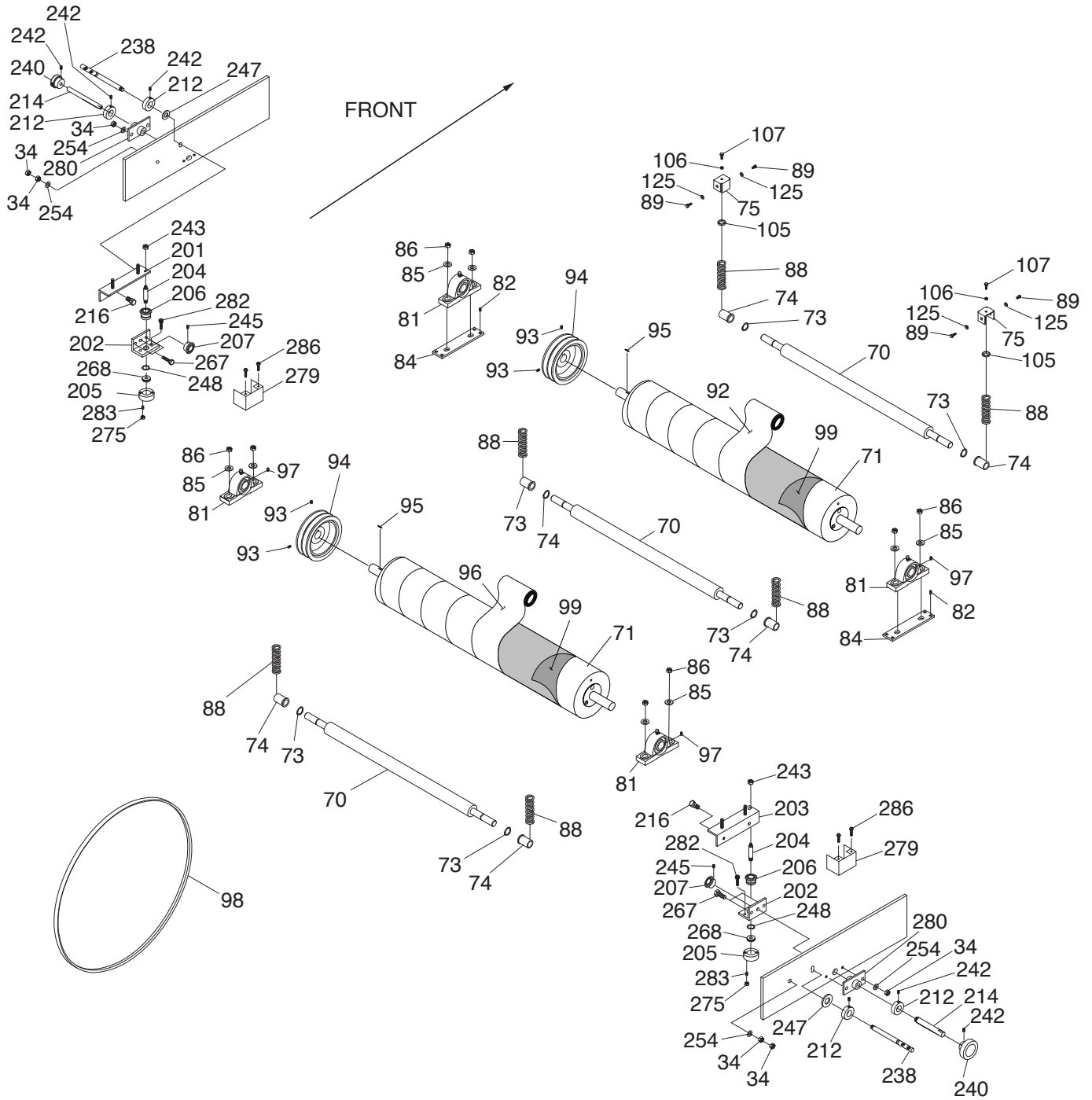
| REF | PART # | DESCRIPTION |
|-----|-----------|----------------------------|
| 150 | P1066R150 | DEPTH SCALE |
| 151 | P1066R151 | SCALE POINTER |
| 152 | P1066R152 | FLAT WASHER 1/4 |
| 153 | P1066R153 | PHLP HD SCR 1/4-20 X 3/8 |
| 154 | P1066R154 | FEED MOTOR CORD 18G 3W 36" |
| 155 | P1066R155 | EXT TOOTH WASHER #10 |
| 156 | P1066R156 | LOCK WASHER #10 |
| 208 | P1066R208 | STRAIN RELIEF TYPE-3 PG20 |
| 209 | P1066R209 | TAP SCREW #8 X 5/8 |



G1066Z Stand & Motor



G1066Z Drums & Rollers



G1066Z Parts List

| REF | PART # | DESCRIPTION |
|--------|---------------|-------------------------------------|
| 1 | P1066Z001 | FRAME |
| 2 | P1066Z002 | HEX NUT 3/8-16 |
| 3 | P1066Z003 | FLAT WASHER 3/8 |
| 4 | P1066Z004 | SIDE PANEL |
| 5 | P1066Z005 | FLAT WASHER 1/2 |
| 6 | P1066Z006 | SPROCKET |
| 7 | P1066Z007 | SPROCKET |
| 7-1 | P1066Z007-1 | SHAFT |
| 8 | P1066Z008 | TABLE SCREW FINE THREADS 3/4-16 |
| 8-1V2 | P1066Z008-1V2 | FLAT WASHER 13 X 26.5 X 2 V2.04.25 |
| 9 | P1066Z009 | CHAIN |
| 10 | P1066Z010 | FRONT BRACE |
| 11 | P1066Z011 | SET SCREW 5/16-24 X 3/8 |
| 12 | P1066Z012 | COMPLETE CRANK HANDLE ASSY |
| 13 | P1066Z013 | DUST PORT TOP |
| 14 | P1066Z014 | HOOD |
| 15 | P1066Z015 | REAR BRACE |
| 16 | P1066Z016 | REAR PANEL |
| 17 | P1066Z017 | SET SCREW 1/4-20 X 1/2 |
| 18 | P1066Z018 | MOTOR PULLEY |
| 19 | P1066Z019 | KEY 5 X 5 X 25 |
| 20 | P1066Z020 | DRUM MOTOR 5HP 220V 1-PH |
| 20-1 | P1066Z020-1 | MOTOR FAN |
| 20-2 | P1066Z020-2 | MOTOR FAN COVER |
| 20-3 | P1066Z020-3 | S CAPACITOR 600M 125V 1-3/4 X 3-3/8 |
| 20-4 | P1066Z020-4 | R CAPACITOR 50M 350V 1-3/4 X 3-3/8 |
| 20-5 | P1066Z020-5 | CAPACITOR COVER |
| 20-6 | P1066Z020-6 | JUNCTION BOX |
| 20-7 | P1066Z020-7 | CENTRIFUGAL SWITCH |
| 21 | P1066Z021 | HEX NUT 3/8-16 |
| 22 | P1066Z022 | HEX BOLT 3/8-16 X 1 |
| 23 | P1066Z023 | BRACKET |
| 24 | P1066Z024 | FLAT WASHER 3/8 |
| 25 | P1066Z025 | PHLP HD SCR M4-.7 X 10 |
| 26 | P1066Z026 | FLAT WASHER 3/8 |
| 27 | P1066Z027 | HEX NUT 3/8-16 |
| 28 | P1066Z028 | DUST DEFLECTOR |
| 29 | P1066Z029 | TAP SCREW #8 X 3/8 |
| 30 | P1066Z030 | GROMMET 29 X 25MM |
| 31 | P1066Z031 | POWER CORD 12G 3W 72" |
| 32 | P1066Z032 | FRONT PANEL |
| 33V2 | P1066Z033V2 | CONTACTOR SDE MA-30 240V V2.05.16 |
| 34 | P1066Z034 | HEX NUT 5/16-18 |
| 35 | P1066Z035 | HEX NUT 3/4-16 1-1/4" DIA |
| 36 | P1066Z036 | TABLE FRAME |
| 37 | P1066Z037 | FLAT WASHER 5/16 |
| 38 | P1066Z038 | SET SCREW 3/8-16 X 1/4 |
| 39V4 | P1066Z039V4 | CONVEYOR MOTOR 1/3HP 60VDC V4.12.24 |
| 39V4-1 | P1066Z039V4-1 | MOTOR BRUSH 2-PC SET |
| 39V4-2 | P1066Z039V4-2 | MOTOR BRUSH CAP |
| 40 | P1066Z040 | FLAT WASHER 5/16 |
| 41 | P1066Z041 | HEX NUT 5/16-18 |
| 42 | P1066Z042 | KEY 5 X 5 X 20 |
| 43 | P1066Z043 | CHAIN |
| 44 | P1066Z044 | SPROCKET |
| 46 | P1066Z046 | MOTOR BRACKET |
| 47 | P1066Z047 | CAP SCREW 1/4-20 X 3/4 |

| REF | PART # | DESCRIPTION |
|------|-------------|---------------------------------|
| 48 | P1066Z048 | FLAT WASHER 1/4 |
| 49 | P1066Z049 | HEX BOLT 5/16-18 X 1-1/4 |
| 50 | P1066Z050 | GUARD HINGED LEFT |
| 51 | P1066Z051 | ROLLER BRACKET |
| 52 | P1066Z052 | FLAT HD SCR 1/4-20 X 1 |
| 53 | P1066Z053 | POWER CORD 12G 3W 36" |
| 54 | P1066Z054 | POWER CORD 12G 3W 36" |
| 55 | P1066Z055 | LOCK NUT 1/4-20 |
| 56 | P1066Z056 | LOCK NUT M4-.7 |
| 58 | P1066Z058 | CAP SCREW 1/4-20 X 3/4 |
| 59 | P1066Z059 | GUARD RIGHT |
| 60 | P1066Z060 | ROLLER BRACKET BOLT 1/2-13 X 70 |
| 61 | P1066Z061 | BUSHING SUPPORT |
| 62 | P1066Z062 | HEX BOLT 1/4-20 X 1/4 |
| 63 | P1066Z063 | FLAT WASHER 1/4 |
| 64 | P1066Z064 | PLATE |
| 65 | P1066Z065 | DRIVE ROLLER KNURLED 24 IN |
| 66 | P1066Z066 | TABLE 12 HOLE |
| 67 | P1066Z067 | SET SCREW 5/16-18 X 1/2 |
| 68 | P1066Z068 | SPROCKET |
| 69 | P1066Z069 | RUBBER CONVEYOR BELT |
| 70 | P1066Z070 | PRESSURE ROLLER |
| 71 | P1066Z071 | SANDING DRUM |
| 72 | P1066Z072 | IDLE ROLLER SMOOTH 24 IN |
| 73 | P1066Z073 | EXT RETAINING RING 19MM |
| 74 | P1066Z074 | BUSHING |
| 74V2 | P1066Z074V2 | BUSHING V2.12.23 |
| 75 | P1066Z075 | BRACKET |
| 77 | P1066Z077 | FLAT WASHER 1/4 |
| 78 | P1066Z078 | TAP SCREW 1/4 X 1-1/2 |
| 79 | P1066Z079 | SIDE PANEL |
| 80 | P1066Z080 | DUST PORT FRONT |
| 81 | P1066Z081 | BEARING BLOCK SET |
| 82 | P1066Z082 | SET SCREW 5/16-24 X 1/2 |
| 84 | P1066Z084 | BEARING BLOCK PLATE, TAPPED |
| 85 | P1066Z085 | FLAT WASHER 3/8 |
| 86 | P1066Z086 | LOCK NUT 3/8-16 |
| 88 | P1066Z088 | COMPRESSION SPRING |
| 89 | P1066Z089 | HEX BOLT 1/4-20 X 3/8 |
| 90 | P1066Z090 | FLAT WASHER 3/8 |
| 91 | P1066Z091 | HEX BOLT M8-1.25 X 24 |
| 92 | P1066Z092 | SANDING ROLL 3" x 50' A80 H&L |
| 93 | P1066Z093 | SET SCREW 3/8-16 X 1/2 |
| 94 | P1066Z094 | DRUM PULLEY |
| 95 | P1066Z095 | KEY 1/4 X 1/4 X 1-1/4 |
| 96 | P1066Z096 | SANDING ROLL 3" x 50' A120 H&L |
| 97 | P1066Z097 | SET SCREW M6-1 X 6 |
| 98 | P1066Z098 | V-BELT B67 |
| 99 | P1066Z099 | HOOK-AND-LOOP BACKING |
| 101 | P1066Z101 | STRIKE |
| 102 | P1066Z102 | LATCH |
| 105 | P1066Z105 | SPRING PLATE |
| 106 | P1066Z106 | HEX NUT 1/4-20 |
| 107 | P1066Z107 | HEX BOLT 1/4-20 X 5/8 |
| 118 | P1066Z118 | LINE CORD |
| 119 | P1066Z119 | LINE CORD |
| 120 | P1066Z120 | EARTH LEAD GREEN |



G1066Z Parts List (Cont.)

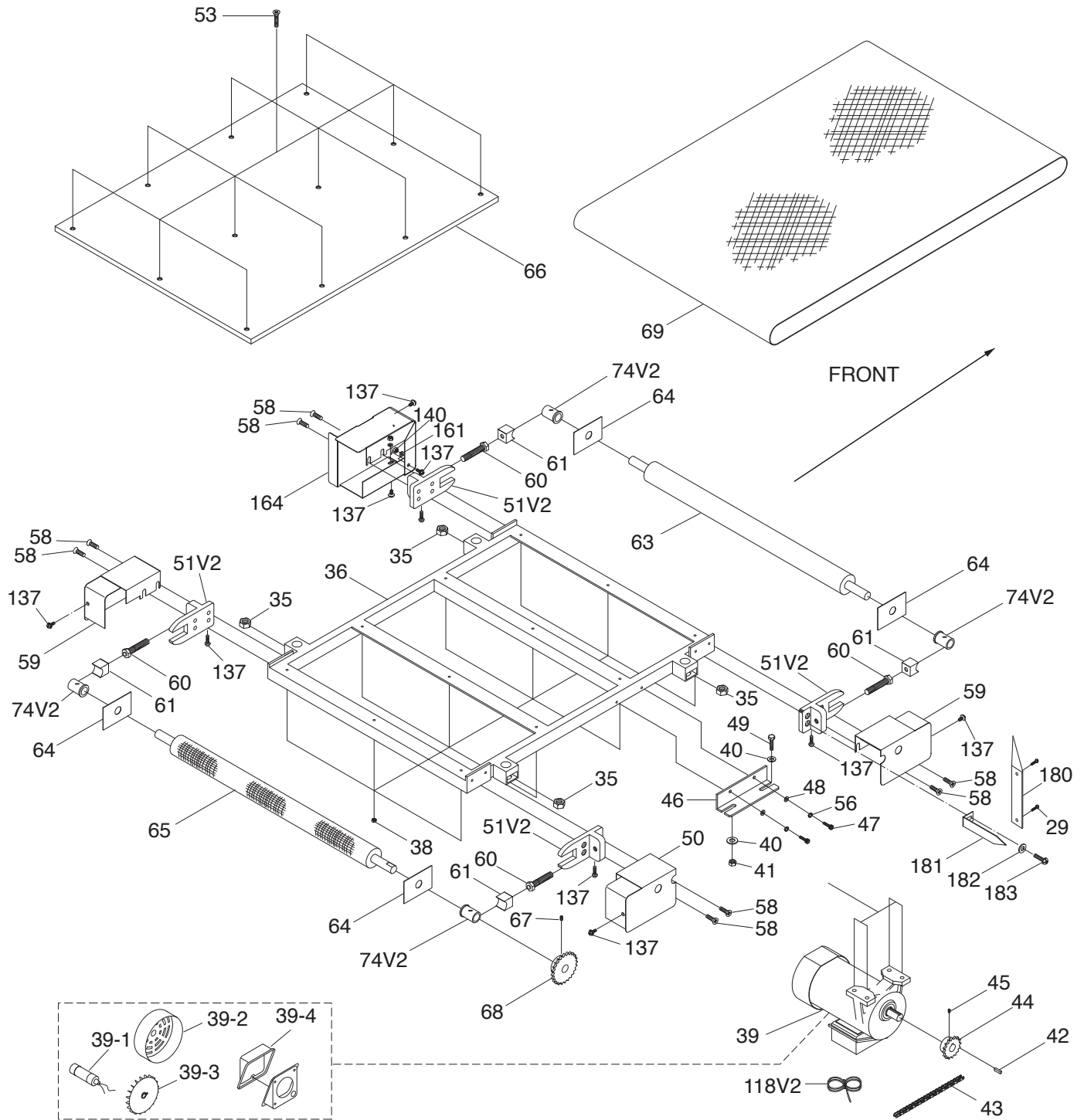
| REF | PART # | DESCRIPTION |
|---------|---------------|---------------------------------------|
| 125 | P1066Z125 | FLAT WASHER 1/4 |
| 126 | P1066Z126 | STRAIN RELIEF TYPE-3 PG20 |
| 136 | P1066Z136 | BASE STEEL CRATE |
| 137 | P1066Z137 | PHLP HD SCR 10-24 X 3/8 |
| 138 | P1066Z138 | HEX NUT M4-.7 |
| 139 | P1066Z139 | TAP SCREW #8 X 1/2 |
| 140 | P1066Z140 | FLAT WASHER #10 |
| 201 | P1066Z201 | BEARING SEAT LEFT |
| 202 | P1066Z202 | MOUNTING BRACKET |
| 203 | P1066Z203 | BEARING SEAT RIGHT |
| 204 | P1066Z204 | MICRO ADJUST SCREW |
| 205 | P1066Z205 | THRUST BEARING SEAT |
| 206 | P1066Z206 | BEVEL GEAR A |
| 207 | P1066Z207 | BEVEL GEAR B |
| 212 | P1066Z212 | LOCK COLLAR |
| 214 | P1066Z214 | DRIVE SHAFT |
| 216 | P1066Z216 | RIGHT BEARING SEAT BOLT 5/16-18 X 1/2 |
| 217 | P1066Z217 | WIRING PANEL |
| 218V2 | P1066Z218V2 | MAG SWITCH BOX V2 |
| 218-1 | P1066Z218-1 | TERMINAL BLOCK |
| 219 | P1066Z219 | PEDESTAL ARM |
| 220 | P1066Z220 | CONTROL BOX |
| 221 | P1066Z221 | CONTROL PANEL |
| 221-1 | P1066Z221-1 | FEED RATE SWITCH |
| 221-2V2 | P1066Z221-2V2 | COMP CONTROL WIRE HARNESS V2.10.08 |
| 222V2 | P1066Z222V2 | CONTACTOR SDE MA-09 240V V2.06.13 |
| 223 | P1066Z223 | ON SWITCH NHD CB-10 |
| 224 | P1066Z224 | OFF SWITCH NHD CB-01 |
| 225 | P1066Z225 | E-STOP BUTTON NHD CB-01 |
| 226 | P1066Z226 | LOAD/AMP METER |
| 226-1 | P1066Z226-1 | LOAD/AMP METER COVER |
| 227 | P1066Z227 | CABLE MARKER |
| 238 | P1066Z238 | LOCK HANDLE |
| 239 | P1066Z239 | SCALE |
| 240 | P1066Z240 | CONTROL KNOB |
| 242 | P1066Z242 | SET SCREW 1/4-20 X 5/16 |
| 243 | P1066Z243 | LOCK NUT 1/4-20 |
| 244 | P1066Z244 | POINTER |
| 245 | P1066Z245 | SET SCREW 10-24 X 1/4 |
| 246 | P1066Z246 | PHLP HD SCR 1/4-20 X 3/8 |

| REF | PART # | DESCRIPTION |
|-------|-------------|-----------------------------------|
| 247 | P1066Z247 | FLAT WASHER 5/16 |
| 248 | P1066Z248 | EXT RETAINING RING 20MM |
| 249 | P1066Z249 | HEX NUT 1/4-20 |
| 250 | P1066Z250 | HEX BOLT 1/4-20 X 3/4 |
| 251 | P1066Z251 | FLAT WASHER 1/4 |
| 253 | P1066Z253 | HEX BOLT 5/16-18 X 1 |
| 254 | P1066Z254 | FLAT WASHER 5/16 |
| 256 | P1066Z256 | PHLP HD SCR 10-24 X 1/2 |
| 257 | P1066Z257 | FLAT WASHER #10 |
| 258 | P1066Z258 | HEX NUT 10-24 |
| 259V2 | P1066Z259V2 | PHLP HD SCR M5-.8 X 10 |
| 260 | P1066Z260 | VARIABLE SPEED CIRCUIT BOARD |
| 261V2 | P1066Z261V2 | PHLP HD SCR M5-.8 X 15 |
| 261V3 | P1066Z261V3 | PHLP HD SCR 1/4-20 X 1/4 |
| 262 | P1066Z262 | HEX NUT 10-24 |
| 263 | P1066Z263 | HINGE |
| 264 | P1066Z264 | NYLON CABLE TIES |
| 265 | P1066Z265 | AIR DUST SCOOP |
| 266 | P1066Z266 | HANDLE |
| 267 | P1066Z267 | CAP SCREW 5/16-18 X 1-1/4 |
| 268 | P1066Z268 | THRUST BEARING 51101 |
| 269 | P1066Z269 | SPROCKET SHAFT |
| 270 | P1066Z271 | SPROCKET |
| 271 | P1066Z271 | ADJUSTMENT PLATE |
| 272 | P1066Z272 | SUPPORT ARM LEFT |
| 273 | P1066Z273 | SUPPORT ARM RIGHT |
| 274 | P1066Z274 | BALL BEARING 6201-2RS |
| 275 | P1066Z275 | HEX NUT 10-24 |
| 276 | P1066Z276 | PHLP HD SCR M4-.7 X 6 |
| 278 | P1066Z278 | SELF ADHESIVE FOAM 660 X 15 X 2MM |
| 279 | P1066Z279 | DUST COVER |
| 280 | P1066Z280 | DRIVE SHAFT BRACKET |
| 282 | P1066Z282 | CAP SCREW 1/4-20 X 5/8 |
| 283 | P1066Z283 | SET SCREW 10-24 X 1/2 |
| 285 | P1066Z285 | CAP SCREW 5/16-18 X 3/4 |
| 286 | P1066Z286 | TAP SCREW #10 X 3/8 |
| 287 | P1066Z287 | CORD RETAINER CLIP |
| 288 | P1066Z288 | TAP SCREW #8 X 5/8 |
| 292 | P1066Z292 | PHLP HD SCR M6-1 X 20 |

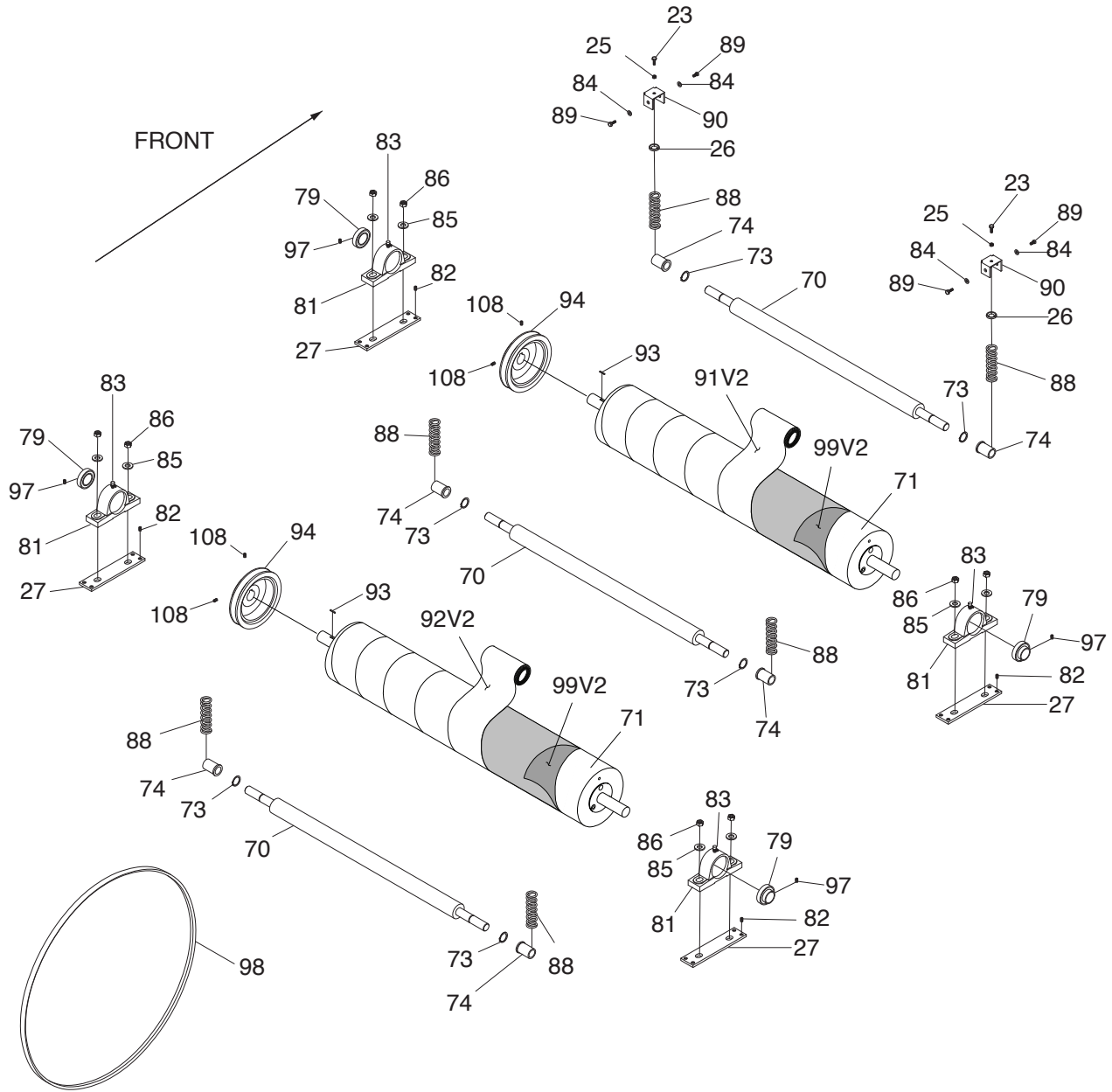
BUY PARTS ONLINE AT GRIZZLY.COM!
Scan QR code to visit our Parts Store.




G1079R Conveyor Belt & Table



G1079R Drums & Rollers



G1079R Parts List

| REF | PART # | DESCRIPTION |
|--------|---------------|-------------------------------------|
| 1 | P1079R001 | FRAME |
| 2 | P1079R002 | HEX NUT 3/8-16 |
| 3 | P1079R003 | FLAT WASHER 3/8 |
| 4 | P1079R004 | SIDE PANEL |
| 5 | P1079R005 | BUSHING |
| 6 | P1079R006 | SPROCKET |
| 7 | P1079R007 | SPROCKET |
| 7-1 | P1079R007-1 | SHAFT |
| 8 | P1079R008 | TABLE SCREW 3/4-16 |
| 8-1V2 | P1079R008-1V2 | FLAT WASHER 13 X 26.5 X 2 V2.04.25 |
| 9 | P1079R009 | CHAIN |
| 10 | P1079R010 | FRONT BRACE |
| 11 | P1079R011 | SET SCREW 1/4-20 X 1/2 |
| 12 | P1079R012 | COMPLETE CRANK HANDLE ASSY |
| 13 | P1079R013 | DUST PORT TOP |
| 14V3 | P1079R014V3 | HOOD V3.03.24 |
| 15V2 | P1079R015V2 | REAR BRACE V2.02.11 |
| 16V2 | P1079R016V2 | REAR PANEL V2.02.11 |
| 17 | P1079R017 | SET SCREW 1/4-20 X 1/2 |
| 18 | P1079R018 | MOTOR PULLEY |
| 19 | P1079R019 | KEY 1/4 X 1/4 X 3 |
| 20V2 | P1079R020V2 | DRUM MOTOR 2HP 220V 1-PH V2.03.24 |
| 20V2-1 | P1079R020V2-1 | DRUM MOTOR FAN COVER |
| 20V2-2 | P1079R020V2-2 | DRUM MOTOR FAN |
| 20V2-3 | P1079R020V2-3 | S CAPACITOR 400M 125V 1-3/4 X 3-3/8 |
| 20V2-4 | P1079R020V2-4 | DRUM MOTOR JUNCTION BOX |
| 20V2-5 | P1079R020V2-5 | CENTRIFUGAL SWITCH |
| 21 | P1079R021 | HEX NUT 3/8-16 |
| 22 | P1079R022 | HEX BOLT 3/8-16 X 3/4 |
| 23 | P1079R023 | HEX BOLT 1/4-20 X 3/4 |
| 24 | P1079R024 | FLAT WASHER 3/8 |
| 25 | P1079R025 | HEX NUT 1/4-20 |
| 26 | P1079R026 | SPRING PLATE |
| 27 | P1079R027 | ADJUST PLATE |
| 29 | P1079R029 | TAP SCREW #6 X 1/2 |
| 31V2 | P1079R031V2 | POWER CORD V2.02.09 |
| 32V2 | P1079R032V2 | FRONT PANEL V2.02.11 |
| 33V2 | P1079R033V2 | SINGLE PHASE ON/OFF SWITCH V2.02.11 |
| 34 | P1079R034 | HEX NUT 5/16-18 |
| 35 | P1079R035 | HEX NUT 3/4-16 |
| 36 | P1079R036 | TABLE FRAME |
| 38 | P1079R038 | LOCK NUT 1/4-20 |
| 39 | P1079R039 | FEED MOTOR 1/4HP 220V 1-PH |
| 39-1 | P1079R039-1 | R CAPACITOR 12M 350V 1-1/2 X 2 |
| 39-2 | P1079R039-2 | FEED MOTOR FAN COVER |
| 39-3 | P1079R039-3 | FEED MOTOR FAN |
| 39-4 | P1079R039-4 | FEED MOTOR JUNCTION BOX |
| 40 | P1079R040 | FLAT WASHER 5/16 |
| 41 | P1079R041 | HEX NUT 5/16-18 |
| 42 | P1079R042 | KEY 5 X 5 X 20 |
| 43 | P1079R043 | CHAIN |
| 44 | P1079R044 | SPROCKET |
| 45 | P1079R045 | SET SCREW 1/4-20 X 1/2 |

| REF | PART # | DESCRIPTION |
|-------|-------------|---------------------------------|
| 47 | P1079R047 | CAP SCREW 1/4-20 X 3/4 |
| 48 | P1079R048 | FLAT WASHER 5/16 |
| 49 | P1079R049 | HEX BOLT 5/16-18 X 1 |
| 50 | P1079R050 | GUARD HINGED LEFT |
| 51V2 | P1079R051V2 | ROLLER BRACKET V2.02.11 |
| 53 | P1079R053 | FLAT HD SCR 1/4-20 X 2-3/8 |
| 55 | P1079R055 | LATCH |
| 56 | P1079R056 | LOCK WASHER 1/4 |
| 58 | P1079R058 | CAP SCREW 1/4-20 X 3/4 |
| 59 | P1079R059 | GUARD RIGHT |
| 60 | P1079R060 | ROLLER BRACKET BOLT 1/2-13 X 70 |
| 61 | P1079R061 | BUSHING SUPPORT |
| 63 | P1079R063 | IDLER ROLLER |
| 64 | P1079R064 | PLATE |
| 65 | P1079R065 | DRIVE ROLLER |
| 66 | P1079R066 | TABLE |
| 67 | P1079R067 | SET SCREW 1/4-20 X 1/2 |
| 68 | P1079R068 | SPROCKET |
| 69 | P1079R069 | RUBBER CONVEYOR BELT |
| 70 | P1079R070 | PRESSURE ROLLER |
| 71 | P1079R071 | SANDING DRUM |
| 73 | P1079R073 | EXT RETAINING RING 19MM |
| 74 | P1079R074 | BUSHING |
| 74V2 | P1079R074V2 | BUSHING V2.03.24 |
| 79 | P1079R079 | BEARING 204/20MM UCP 204 |
| 80 | P1079R080 | DUST PORT FRONT |
| 81 | P1079R081 | BEARING BLOCK |
| 82 | P1079R082 | SET SCREW 1/4-20 X 5/8 |
| 83 | P1079R083 | GREASE FITTING M6-1 X 5 |
| 84 | P1079R084 | FLAT WASHER 1/4 |
| 85 | P1079R085 | FLAT WASHER 3/8 |
| 86 | P1079R086 | LOCK NUT 3/8-16 |
| 87 | P1079R087 | FOAM STRIP 2 X 15 X 460MM |
| 88 | P1079R088 | COMPRESSION SPRING |
| 89 | P1079R089 | HEX BOLT M6-1 X 8 |
| 90 | P1079R090 | BRACKET |
| 91V2 | P1079R091V2 | SANDING ROLL 3" x 50' A60 H&L |
| 92V2 | P1079R092V2 | SANDING ROLL 3" x 50' A100 H&L |
| 93 | P1079R093 | KEY 6 X 6 X 30 |
| 94 | P1079R094 | SANDING DRUM PULLEY |
| 97 | P1079R097 | SET SCREW 3/8-16 X 1/2 |
| 98 | P1079R098 | V-BELT B60 |
| 99V2 | P1079R099V2 | HOOK-AND-LOOP BACKING |
| 100 | P1079R100 | SWITCH BOX |
| 101 | P1079R101 | STRIKE |
| 104 | P1079R104 | CONTROL WIRE 1015 16G 130MM |
| 105 | P1079R105 | OVERLOAD BUTTON MB-15A |
| 108 | P1079R108 | SET SCREW 1/4-20 X 1/2 |
| 116V2 | P1079R116V2 | DUST SCOOP DEFLECTOR V2.03.24 |
| 117V2 | P1079R117V2 | MOTOR CORD 16G 3C 30" V2.02.11 |
| 118V2 | P1079R118V2 | FEED MOTOR CORD V2.02.09 |
| 137 | P1079R137 | FLANGE BOLT 10-24 X 3/8 |
| 139 | P1079R139 | TAP SCREW #8 X 1/2 |



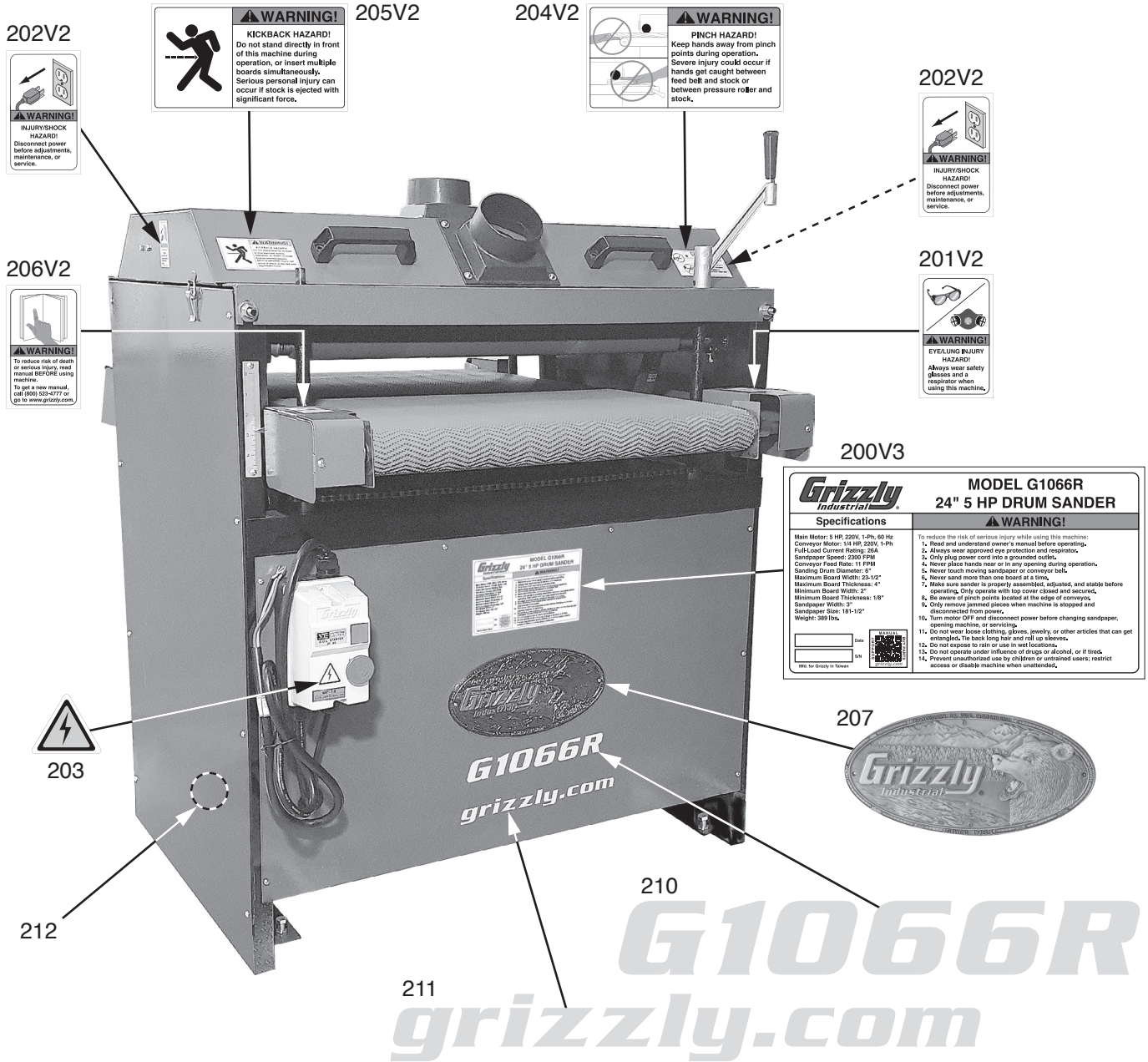
G1079R Parts List (Cont.)

| REF | PART # | DESCRIPTION |
|-----|-----------|-------------------------|
| 149 | P1079R149 | HEX WRENCH 3MM |
| 150 | P1079R150 | HINGE |
| 151 | P1079R151 | HANDLE |
| 152 | P1079R152 | LEFT SUPPORT ARM |
| 153 | P1079R153 | RIGHT SUPPORT ARM |
| 154 | P1079R154 | CAP SCREW 5/16-18 X 5/8 |
| 155 | P1079R155 | HEX NUT 5/16-18 |
| 156 | P1079R156 | PHLP HD SCR 2-32 X 1/2 |
| 157 | P1079R157 | HEX NUT 2-32 |
| 158 | P1079R158 | FRONT CHAIN COVER |
| 159 | P1079R159 | REAR CHAIN COVER |
| 160 | P1079R160 | PHLP HD SCR 10-24 X 3/8 |
| 161 | P1079R161 | FLAT WASHER #10 |
| 162 | P1079R162 | HEX NUT 10-24 |
| 163 | P1079R163 | PLATE |
| 164 | P1079R164 | LEFT REAR ROLLER GUARD |

| REF | PART # | DESCRIPTION |
|-----|-----------|-----------------------------------|
| 165 | P1079R165 | PHLP HD SCR 10-24 X 1/2 |
| 166 | P1079R166 | HEX NUT 10-24 |
| 167 | P1079R167 | EXT TOOTH WASHER #10 |
| 168 | P1079R168 | STRAIN RELIEF 5/8" TYPE-1 SNAP-IN |
| 174 | P1079R174 | STRAIN RELIEF M16 TYPE-6 ST |
| 175 | P1079R175 | PADLOCK STORAGE HOOK |
| 176 | P1079R176 | SWITCH PADLOCK |
| 177 | P1079R177 | TAP SCREW #8 X 1/2 |
| 178 | P1079R178 | TAP SCREW #8 X 3/8 |
| 179 | P1079R179 | PHLP HD SCR 5-32 X 1/4 |
| 180 | P1079R180 | SCALE |
| 181 | P1079R181 | POINTER |
| 182 | P1079R182 | FLAT WASHER 1/4 |
| 183 | P1079R183 | PHLP HD SCR 1/4-20 X 3/8 |
| 184 | P1079R184 | TAP SCREW #8 X 5/8 |



G1066R Labels & Cosmetics



| REF | PART # | DESCRIPTION |
|-------|-------------|-----------------------------------|
| 200V3 | P1066R200V3 | MACHINE ID LABEL V3.02.24 |
| 201V2 | P1066R201V2 | RESPIRATOR/GLASSES LABEL V2.09.22 |
| 202V2 | P1066R202V2 | DISCONNECT POWER LABEL V2.09.22 |
| 203 | P1066R203 | ELECTRICITY LABEL |
| 204V2 | P1066R204V2 | SANDER BELT PINCH LABEL V2.09.22 |
| 205V2 | P1066R205V2 | KICKBACK HAZARD LABEL V2.09.22 |

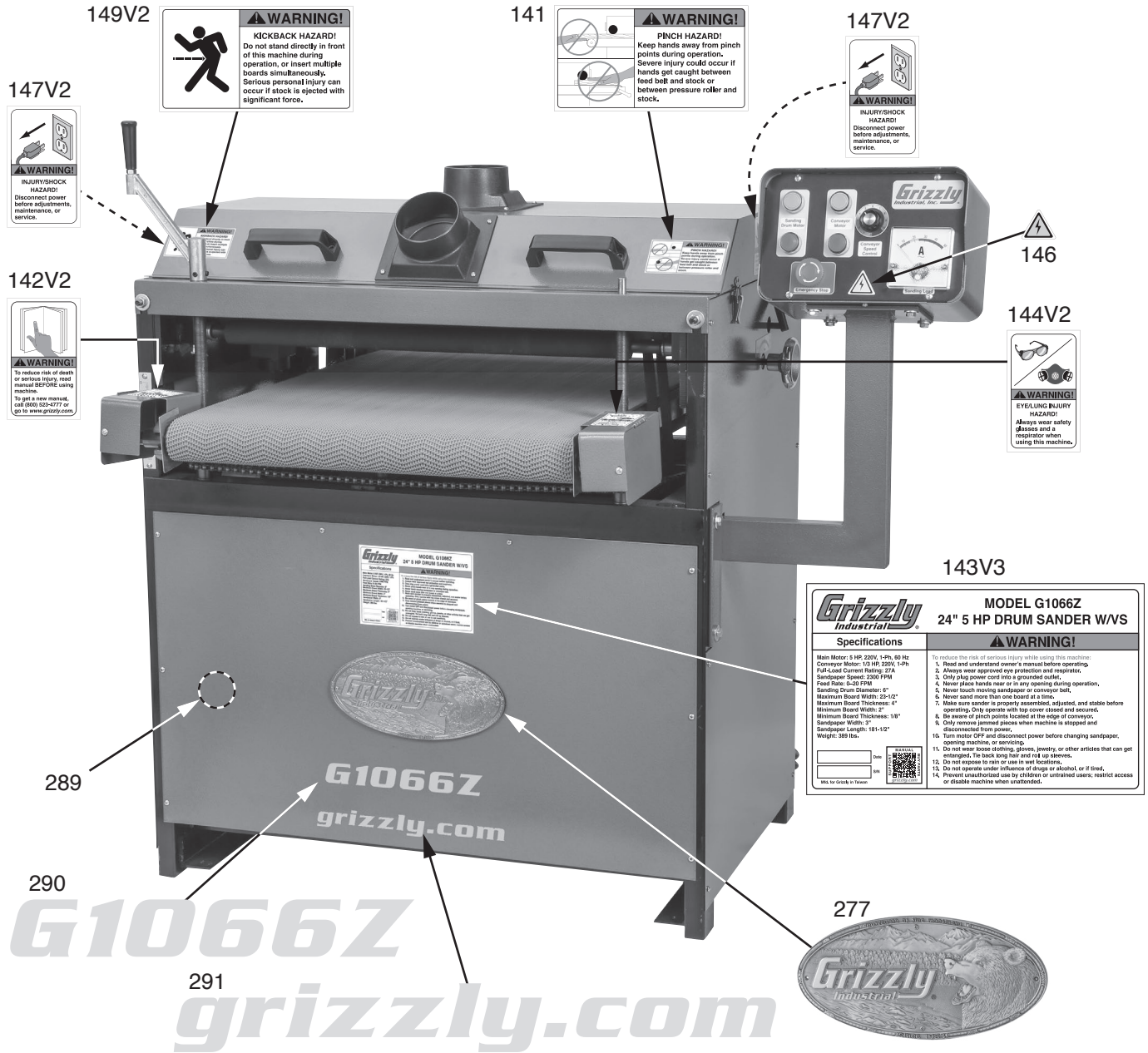
| REF | PART # | DESCRIPTION |
|-------|-------------|-------------------------------|
| 206V2 | P1066R206V2 | READ MANUAL LABEL V2.09.22 |
| 207 | P1066R207 | GRIZZLY NAMEPLATE |
| 210 | P1066R210 | MODEL NUMBER LABEL |
| 211 | P1066R211 | GRIZZLY.COM LABEL |
| 212 | P1066R212 | TOUCH-UP PAINT, GRIZZLY GREEN |

⚠ WARNING

Safety labels help reduce the risk of serious injury caused by machine hazards. If any label comes off or becomes unreadable, the owner of this machine **MUST** replace it in the original location before resuming operations. For replacements, contact (800) 523-4777 or www.grizzly.com.



G1066Z Labels & Cosmetics



| REF | PART # | DESCRIPTION |
|-------|-------------|-----------------------------------|
| 141 | P1066Z141 | SANDER BELT PINCH LABEL |
| 142V2 | P1066Z142V2 | READ MANUAL LABEL V2.09.22 |
| 143V3 | P1066Z143V3 | MACHINE ID LABEL V3.02.24 |
| 144V2 | P1066Z144V2 | RESPIRATOR/GLASSES LABEL V2.09.22 |
| 146 | P1066Z146 | ELECTRICITY LABEL |
| 147V2 | P1066Z147V2 | DISCONNECT POWER LABEL V2.09.22 |

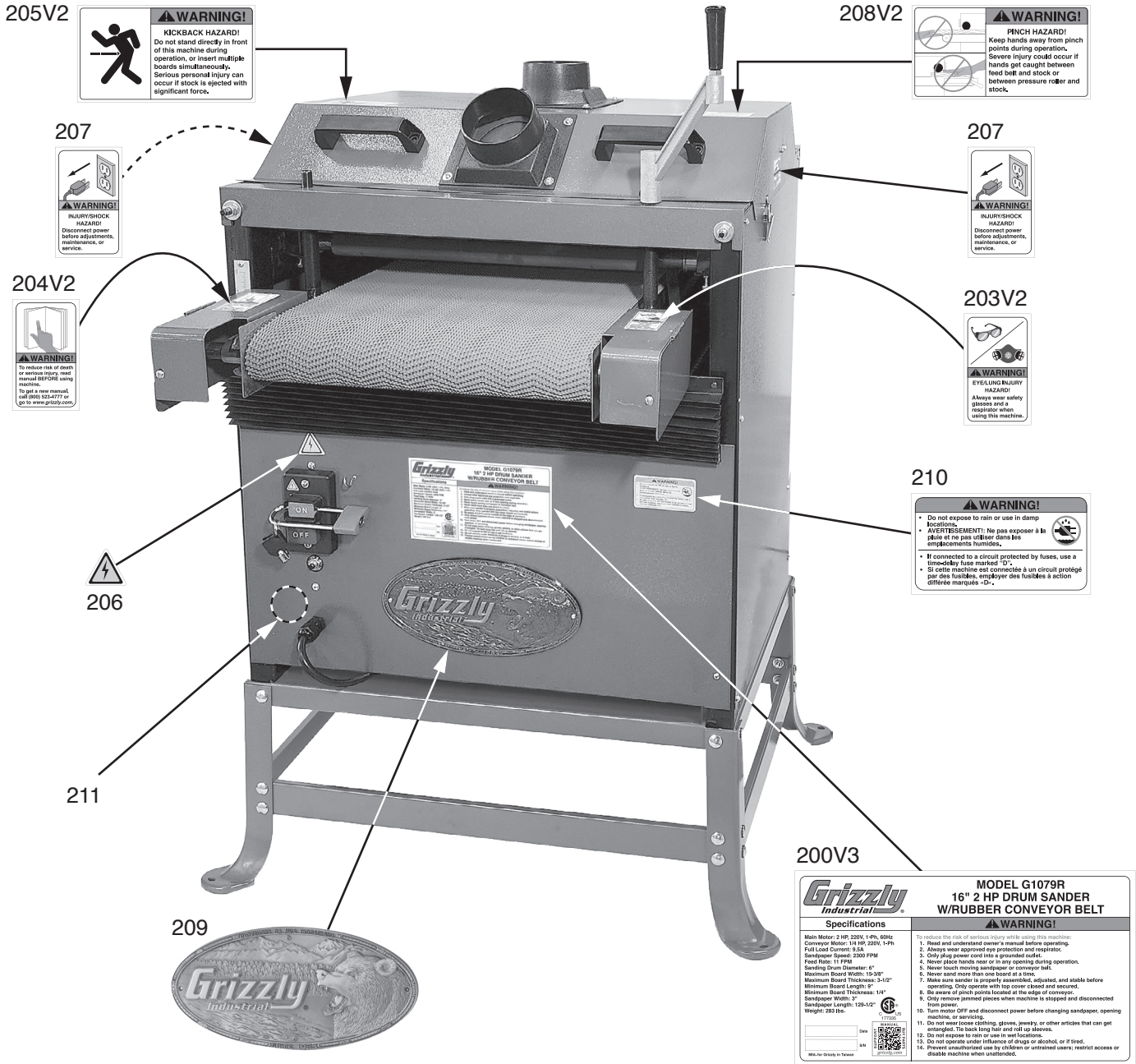
| REF | PART # | DESCRIPTION |
|-------|-------------|--------------------------------|
| 149V2 | P1066Z149V2 | KICKBACK HAZARD LABEL V2.09.22 |
| 277 | P1066Z277 | GRIZZLY NAMEPLATE-LARGE |
| 289 | P1066Z289 | TOUCH-UP PAINT, GRIZZLY GREEN |
| 290 | P1066Z290 | MODEL NUMBER LABEL |
| 291 | P1066Z291 | GRIZZLY.COM LABEL |

⚠ WARNING

Safety labels help reduce the risk of serious injury caused by machine hazards. If any label comes off or becomes unreadable, the owner of this machine **MUST** replace it in the original location before resuming operations. For replacements, contact (800) 523-4777 or www.grizzly.com.



G1079R Labels & Cosmetics



| REF | PART # | DESCRIPTION |
|-------|-------------|-----------------------------------|
| 200V3 | P1079R200V3 | MACHINE ID LABEL V3.02.24 |
| 203V2 | P1079R203V2 | RESPIRATOR/GLASSES LABEL V2.09.22 |
| 204V2 | P1079R204V2 | READ MANUAL LABEL V2.09.22 |
| 205V2 | P1079R205V2 | KICKBACK HAZARD LABEL V2.09.22 |
| 206 | P1079R206 | ELECTRICITY LABEL 1.4W X 1.2H |

| REF | PART # | DESCRIPTION |
|-------|-------------|----------------------------------|
| 207 | P1079R207 | DISCONNECT POWER LABEL |
| 208V2 | P1079R208V2 | SANDER BELT PINCH LABEL V2.09.22 |
| 209 | P1079R209 | GRIZZLY NAMEPLATE-LARGE |
| 210 | P1079R210 | DAMPNESS WARNING LABEL |
| 211 | P1079R211 | TOUCH-UP PAINT, GRIZZLY GREEN |

⚠️ WARNING

Safety labels help reduce the risk of serious injury caused by machine hazards. If any label comes off or becomes unreadable, the owner of this machine **MUST** replace it in the original location before resuming operations. For replacements, contact (800) 523-4777 or www.grizzly.com.

