



# 12" SHEET METAL MACHINE

## MODEL G6089

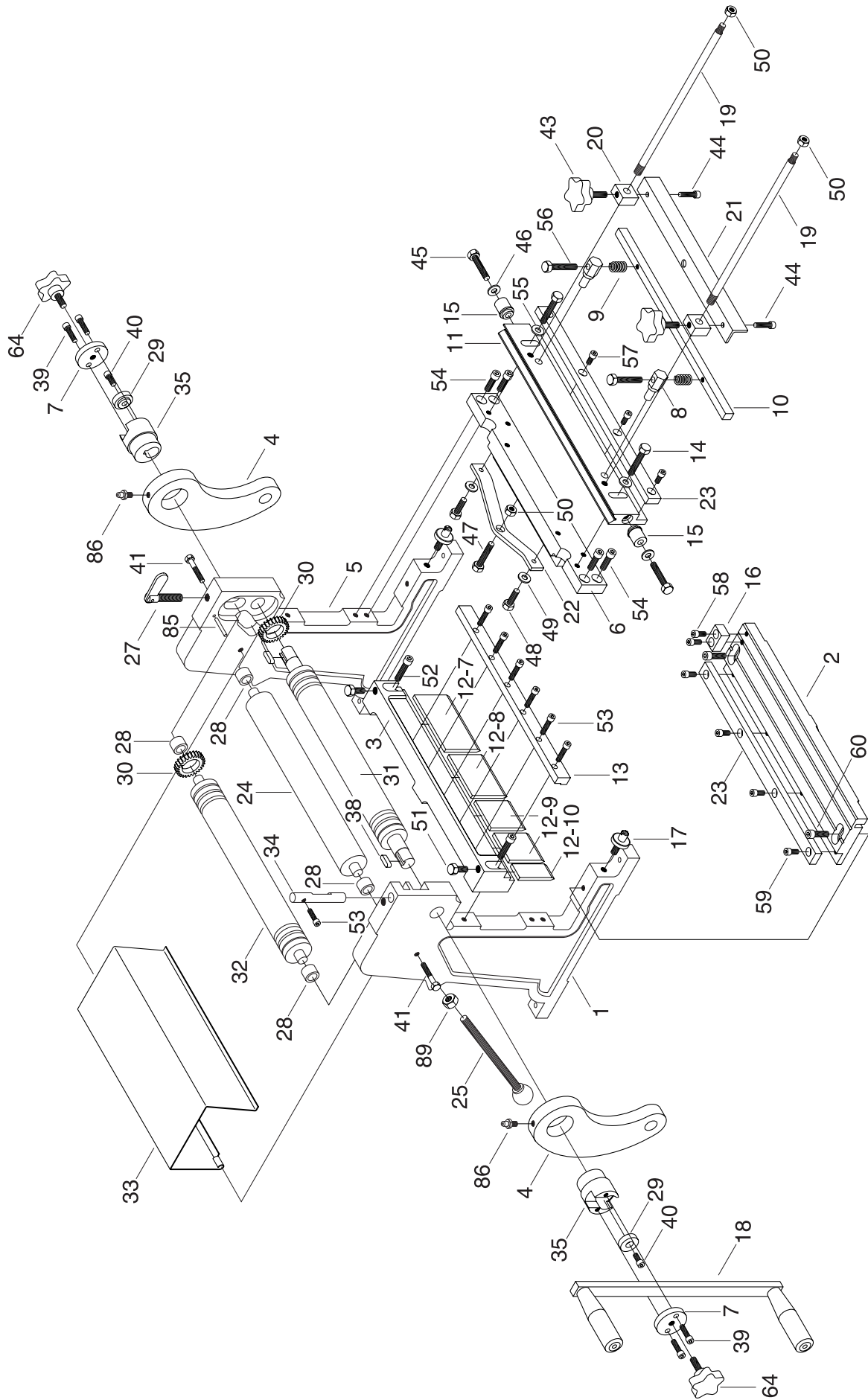
## PARTS LIST



COPYRIGHT © MARCH, 1999 BY GRIZZLY INDUSTRIAL, INC. REG.  
**WARNING: NO PORTION OF THIS MANUAL MAY BE REPRODUCED IN ANY SHAPE  
OR FORM WITHOUT THE WRITTEN APPROVAL OF GRIZZLY INDUSTRIAL, INC.**  
REVISED JANUARY, 2003 PRINTED IN CHINA

#### ONLINE PARTS LIST DISCLAIMER

THESE PARTS REPRESENT THE CONFIGURATION OF THE MACHINE AS IT IS CURRENTLY BEING SHIPPED. THE MACHINE CONFIGURATION CAN CHANGE AS PRODUCT IMPROVEMENTS ARE INCORPORATED. IF YOU OWN AN EARLIER VERSION OF THE MACHINE, THIS PARTS LIST MAY NOT EXACTLY DEPICT YOUR MACHINE. CONTACT CUSTOMER SERVICE IF YOU HAVE ANY QUESTIONS ABOUT PART DIFFERENCES. PREVIOUS PARTS LIST VERSIONS ARE NOT AVAILABLE ONLINE.



G6089 12" Sheet Metal Machine

REF	PART #	DESCRIPTION
1	P6089001	LEFT WALL
2	P6089002	WORK BENCH
3	P6089003	CROSSBEAM
4	P6089004	CRANK ARM
5	P6089005	RIGHT WALL
6	P6089006	REAR FRAME
7	P6089007	COVER
8	P6089008	PRESS PLATE BRACKET
9	P6089009	SPRING
10	P6089010	PRESSING PLATE
11	P6089011	MOVING CUTTER PLATE
12-7	P6089012-7	UPPER BREAKING DIE 4"
12-8	P6089012-8	UPPER BREAKING DIE 3"
12-9	P6089012-9	UPPER BREAKING DIE 2"
12-10	P6089012-10	UPPER BREAKING DIE 1"
13	P6089013	DIE CLAMPING PLATE
14	PB15M	HEX BOLT M8-1.25 X 40
15	P6089015	ARM ROLLING WHEEL
16	P6089016	POSITIONER
17	P6089017	ADJUSTABLE BOLT
18	P6089018	HANDLE ARM
19	P6089019	THREADED ROD
20	P6089020	POSITIONING PIECE
21	P6089021	POSITIONING PLATE
22	P6089022	SUPPORTING PLATE
23	P6089023	CUTTER
24	P6089024	BACK PRESSING ROLL
25	P6089025	LOCK SCREW
27	P6089027	ADJUSTABLE BOLT
28	P6089028	BUSHING
29	P6089029	PRESS COVER
30	P6089030	GEAR

REF	PART #	DESCRIPTION
31	P6089031	LOWER PRESSING ROLL
32	P6089032	UPPER PRESSING ROLL
33	P6089033	PROTECTING COVER
34	P6089034	ROTATION SHAFT
35	P6089035	ECCENTRIC SHAFT
38	PK07M	KEY 6 X 6 X 20
39	PSB01M	CAP SCREW M6-1.0 X 16
40	P6089040	CAP SCREW M6-1.0 X 8
41	P6089041	HEX BOLT M6-1.0 X 44
43	P6089043	KNOB
44	P6089044	CAP SCREW M6-1.0 X 8
45	PB15M	HEX BOLT M8-1.25 X 40
46	PW01M	FLAT WASHER 8MM
47	PB15M	HEX BOLT M8-1.25 X 40
48	PB19M	HEX BOLT M8-1.25 X 24
49	PW01M	FLAT WASHER 8MM
50	PN03M	HEX NUT M8-1.25
51	P6089051	HEX BOLT M10-1.5 X 16
52	PSB13M	CAP SCREW M8-1.25 X 30
53	P6089053	CAP SCREW M6-1.0 X 24
54	PSB11M	CAP SCREW M8-1.25 X 16
55	PW01M	FLAT WASHER 8MM
56	P6089056	HEX BOLT M6-1.0 X 45
57	PSB04M	CAP SCREW M6-1.0 X 10
58	PSB04M	CAP SCREW M6-1.0 X 10
59	PSB04M	CAP SCREW M6-1.0 X 10
60	PSB14M	CAP SCREW M8-1.25 X 20
64	P6089064	HANDLE ADJUST KNOB
85	P6089085	PIN
86	P6089086	GREASE FITTING 5/16"X3/16"
89	PN02M	HEX NUT 10MM