

# *Grizzly* **Industrial, Inc.**®

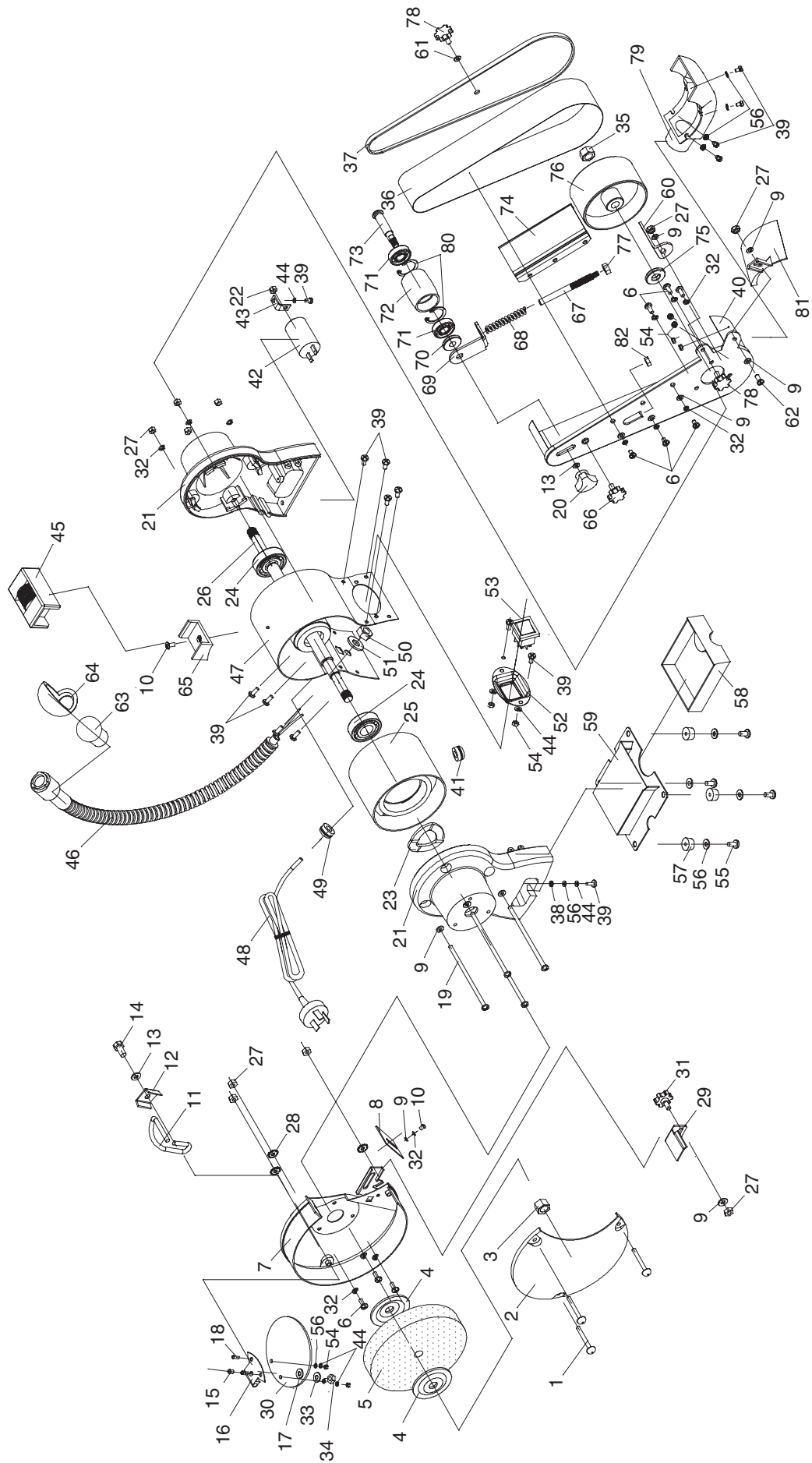
## **GRINDER/SANDER COMBO**

**MODEL H3368**

## **PARTS BREAKDOWN**



COPYRIGHT © OCTOBER, 2002 BY GRIZZLY INDUSTRIAL, INC.  
**WARNING: NO PORTION OF THIS MANUAL MAY BE REPRODUCED IN ANY SHAPE  
OR FORM WITHOUT THE WRITTEN APPROVAL OF GRIZZLY INDUSTRIAL, INC.**



# MODEL H3368 PARTS

Ref#	Part#	Description
1	PS54M	PHLP HD SCR M5-.8 X 45
2	PH3368002	LEFT WHEEL COVER
3	PN16M	HEX NUT M12-1.75 LH
4	PH3368004	FLANGE
5	PH3368005	GRINDING WHEEL A36N5V
6	PS09M	PHLP HD SCR M5-.8 X 10
7	PH3368007	LEFT SAFE GUARD
8	PH3368008	SPARK BREAKER
9	PW02M	FLAT WASHER 5MM
10	PS05M	PHLP HD SCR M5-.8 X 8
11	PH3368011	SUPPORT ARM
12	PH3368012	BRACKET
13	PW01M	FLAT WASHER 8MM
14	PB84M	HEX BOLT M8-1.25 X 14
15	PCB07M	CARR BOLT M6-1.0 X 18
16	PH3368016	EYESHIELD PLATE
17	PW03M	FLAT WASHER 6MM
18	PS53M	PHLP HD SCR M4-.7 X 10
19	PH3368019	HOUSING SCR M5-.8 X 123
20	PH3368020	KNOB M8-1.25
21	PH3368021	END BELL
22	PN03M	HEX NUT M8-1.25
23	PH3368023	WAVY WASHER 28MM
24	P6202RS	BEARING 6202-RS
25	PH3368025	STATOR
26	PH3368026	ROTOR
27	PN06M	HEX NUT M5-.8
28	PTLW02M	EXT TOOTH WASHER 5MM
29	PH3368029	LEFT MOUNT TOOL REST
30	PH3368030	EYESHIELD
31	PH3368031	KNOB BOLT M5-.8 X 10
32	PLW01M	LOCK WASHER 5MM
33	PW05M	FLAT WASHER 4MM
34	PN04M	HEX NUT M4-.7
35	PN09M	HEX NUT M12-1.75
36	PH3368036	SANDING BELT 2" X 27"
37	PH3368037	RIGHT WHEEL COVER
38	PTLW01M	EXT TOOTH WASHER 4MM
39	PS07M	PHLP HD SCR M4-.7 X 8
40	PH3368040	RIGHT SAFE GUARD
41	PH3368041	CORD BUSHING

Ref#	Part#	Description
42	PH3368042	R CAPACITOR 9M 300V
43	PH3368043	CAPACITOR SUPPORT
44	PLW02M	LOCK WASHER 4MM
45	PH3368045	WHEEL DRESSING TOOL
46	PH3368046	LAMP SUPPORT
47	PH3368047	MOTOR HOUSING
48	PH3368048	CORD & PLUG
49	PH3368049	CORD CLIP
50	PN14M	HEX NUT M10-1.0
51	PLW06M	LOCK WASHER 10MM
52	PH3368052	SWITCH PLATE
53	PH3368053	SWITCH
54	PN04M	HEX NUT M4-.7
55	PS21M	PHLP HD SCR M4-.7 X 15
56	PW05M	FLAT WASHER 4MM
57	PH3368057	RUBBER FOOT
58	PH3368058	COOLANT TRAY
59	PH3368059	BOTTOM PLATE
60	PH3368060	RIGHT MOUNT TOOL REST
61	PW02M	FLAT WASHER 5MM
62	PS09M	PHLP HD SCR M5-.8 X 10
63	PH3368063	BULB S-25 12V 10W
64	PH3368064	LAMPSHADE
65	PH3368065	DRESSING BASE
66	PH3368066	KNOB M6-1.0 X 10
67	PH3368067	ADJUSTMENT ROD
68	PH3368068	SPRING
69	PH3368069	TENSION PLATE
70	PH3368070	DRIVE SHAFT WASHER
71	P6201	BEARING 6201-RS
72	PH3368072	UPPER DRIVE CYLINDER
73	PH3368073	DRIVE SHAFT
74	PH3368074	WORK SUPPORT
75	PH3368075	DRIVE SHAFT SPACER
76	PH3368076	LOWER DRIVE CYLINDER
77	PN01M	HEX NUT M6-1.0
78	PH3368078	KNOB BOLT M5-.8 X 10
79	PH3368079	DUST PORT
80	PR29M	INT RETAIN RING 32MM
81	PH3368081	SAFE BOARD
82	PN06M	HEX NUT M5-.8