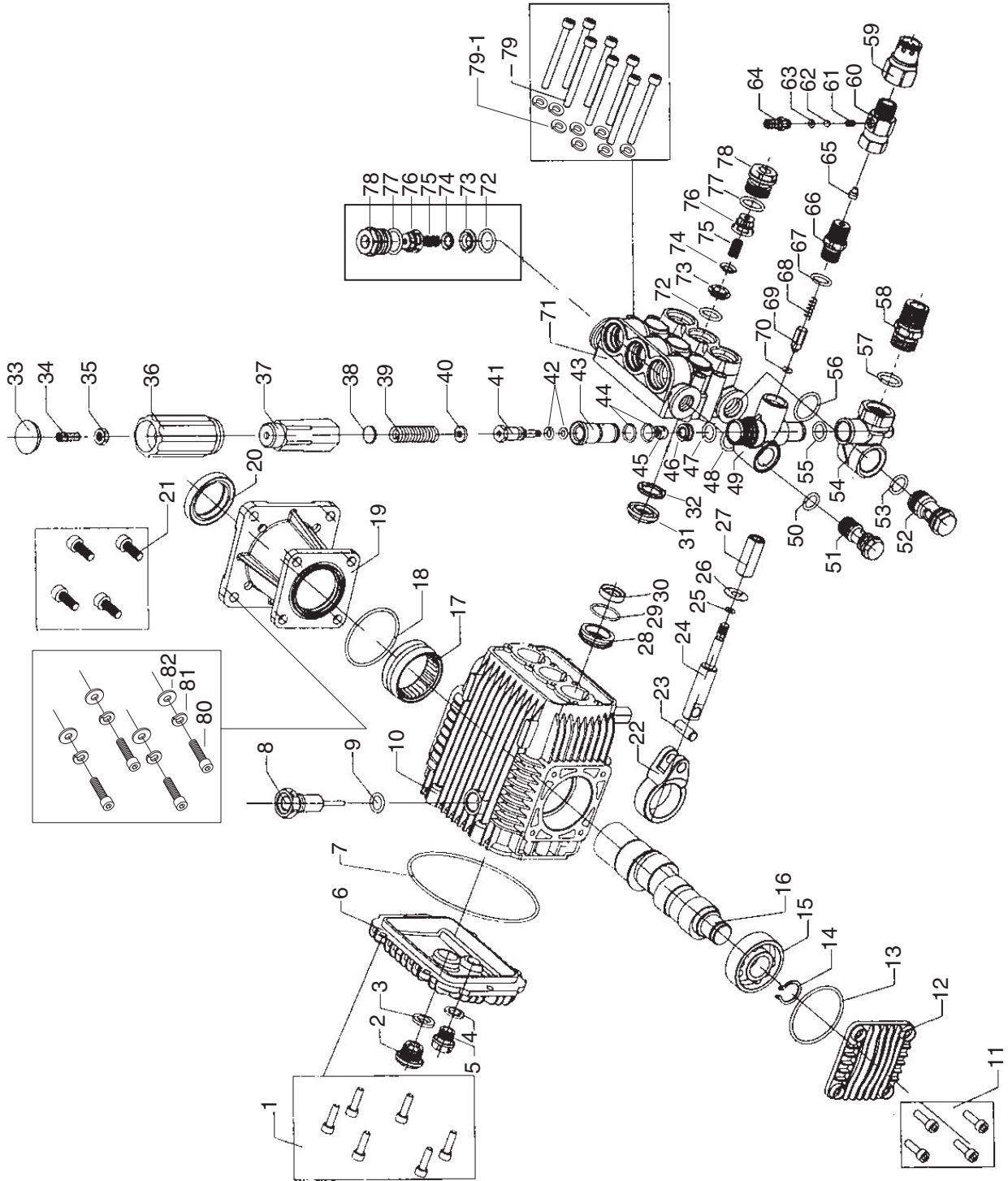


Pump Parts Breakdown



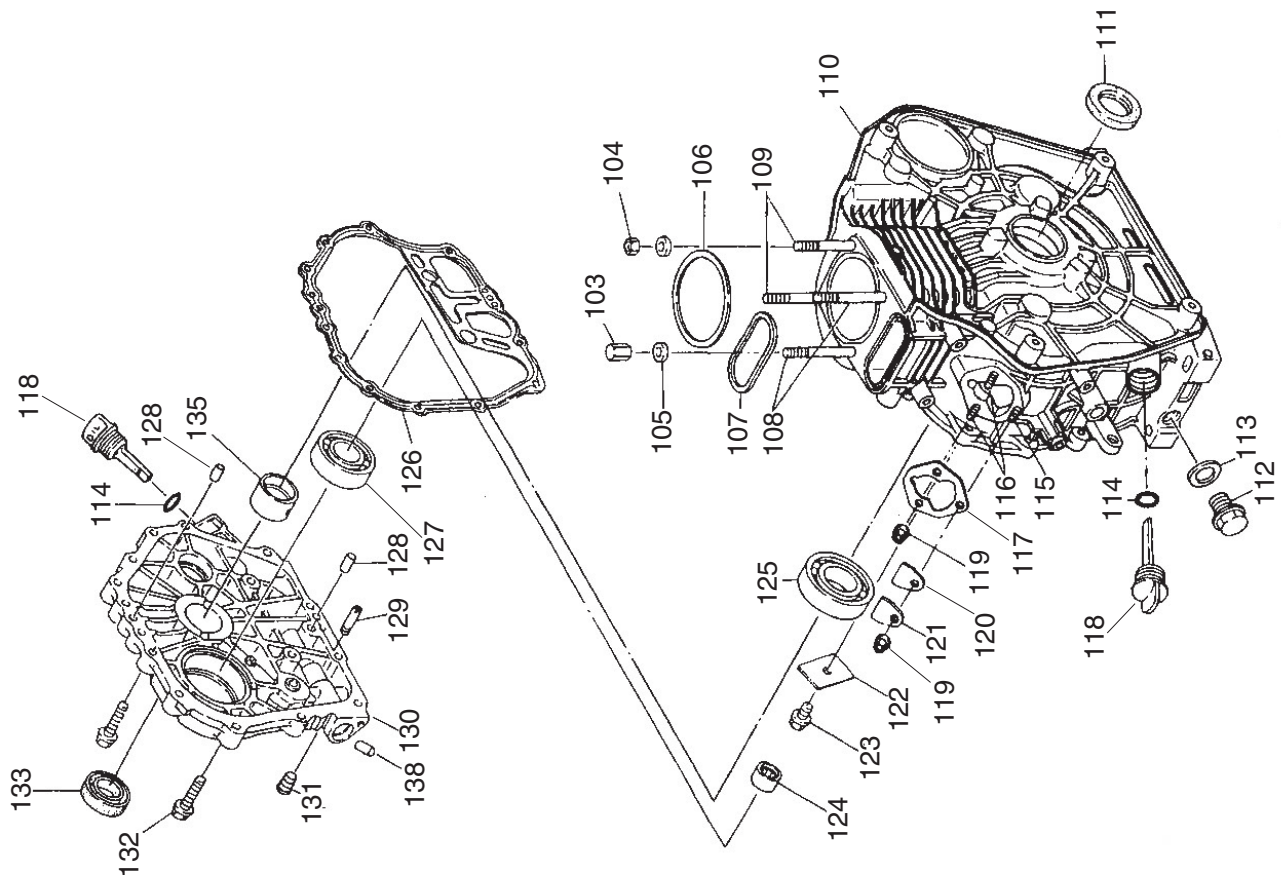
Pump Parts List

REF PART #	DESCRIPTION
1	PSB20M CAP SCREW M5-.8 X 14
2	PH81910002 OIL GAUGE
3	PH81910003 OIL GAUGE CASKET
4	PH81910004 DRAINPLUG GASKET
5	PH81910005 DRAINPLUG
6	PH81910006 CRANK CASE COVER
7	PH81910007 CRANK CASE COVER GASKET
8	PH81910008 OIL INLET PLUG
9	PH81910009 OIL INLET PLUG GASKET
10	PH81910010 CRANK CASE
11	PSB74M CAP SCREW M6-1 X 18
12	PH81910012 CRANK SHAFT COVER
13	PH81910013 BEARING COVER GASKET
14	PH81910014 BEARING CLIP
15	PH81910015 BALL BEARING
16	PH81910016 CRANKSHAFT
17	PH81910017 NEEDLE ROLLER BEARING
18	PH81910018 BEARING COVER GASKET
19	PH81910019 FLANGE
20	PH81910020 FLANGE OIL SEAL
21	PH81910021 CAP SCREW M8-1.25 X 24
22	PH81910022 CONNECTING ROD
23	PH81910023 PLUNGER PIN
24	PH81910024 PLUNGER ROD
25	PH81910025 PLUNGER ROD GASKET
26	PH81910026 WATER CHECKING FLAKE
27	PH81910027 CERAMIC PLUNGER
28	PH81910028 LOCATING RING
29	PH81910029 LOCATING RING GASKET
30	PH81910030 LOCATING RING WATER SEAL
31	PH81910031 U-PACKING SEAL
32	PH81910032 U-PACKING SEAL SEAT
33	PH81910033 PRESSURE ADJUSTING HANDLE COVER
34	PSB31M CAP SCREW M8-1.25 X 25
35	PN03M HEX NUT M8-1.25
36	PH81910036 PRESSURE ADJUSTING HANDLE
37	PH81910037 PRESSURE ADJUSTING SEAT
38	PH81910038 UPPER SPRING WASHER
39	PH81910039 PRESSURE ADJUSTING SPRING
40	PH81910040 LOWER SPRING WASHER
41	PH81910041 WATER RETURN VALVE ROD
42	PH81910042 VALVE JACKET INNER GASKET

REF PART #	DESCRIPTION
43	PH81910043 VALVE JACKET WATER RETURN
44	PH81910044 VALVE JACKET OUTER GASKET
45	PH81910045 WATER RETURN VALVE CORE
46	PH81910046 WATER RETURN VALVE SEAT
47	PH81910047 VALVE SEAT GASKET
48	PH81910048 OUTLET T CONNECTOR GASKET
49	PH81910049 WATER OUTLET T CONNECTOR
50	PH81910050 FIX BLOT GASKET
51	PH81910051 FIX BLOT OUTLET T CONNECTOR
52	PH81910052 FIX BLOT INLET T CONNECTOR
53	PH81910053 INLET T CONNECTOR GASGET SMALL
54	PH81910054 WATER INLET T CONNECTOR
55	PH81910055 TWO T CONNECTOR GASKET
56	PH81910056 INLET T CONNECTOR GASGET
57	PH81910057 WATER INLET CONNECTOR GASGET
58	PH81910058 WATER INLET CONNECTOR
59	PH81910059 3/8" QD BODY
60	PH81910060 DETERGENT INJECTOR
61	PH81910061 INJECTOR SPRING
62	PH81910062 INJECTOR BALL
63	PH81910063 INJECTION NOZZLE GASKET
64	PH81910064 INJECTION NOZZLE
65	PH81910065 WATER SHOOTING NOZZLE
66	PH81910066 WATER OUTLET JOINT
67	PH81910067 WATER OUTLET JOINT GASKET
68	PH81910068 WATER OUTLET CONE VALVE SPRING
69	PH81910069 WATER OUTLET CONE VALVE
70	PH81910070 WATER OUTLET CONE VALVE GASKET
71	PH81910071 CYLINDER
72	PH81910072 CHECK VALVE GASKET
73	PH81910073 WASHER CHECK VALVE
74	PH81910074 CHECK VALVE STOPPER
75	PH81910075 SPRING CHECK VALVE
76	PH81910076 CHECK VALVE BOX
77	PH81910077 COMPACTION GASKET
78	PH81910078 CHECK VALVE COMPACTION CAP
79	PH81910079 CAP SCREW M6-1 X 53
79-1	PLW03M LOCK WASHER 6MM
80	PSB31M CAP SCREW M8-1.25 X 25
81	PLW04M LOCK WASHER 8MM
82	PW01M FLAT WASHER 8MM



Engine Block Parts Breakdown

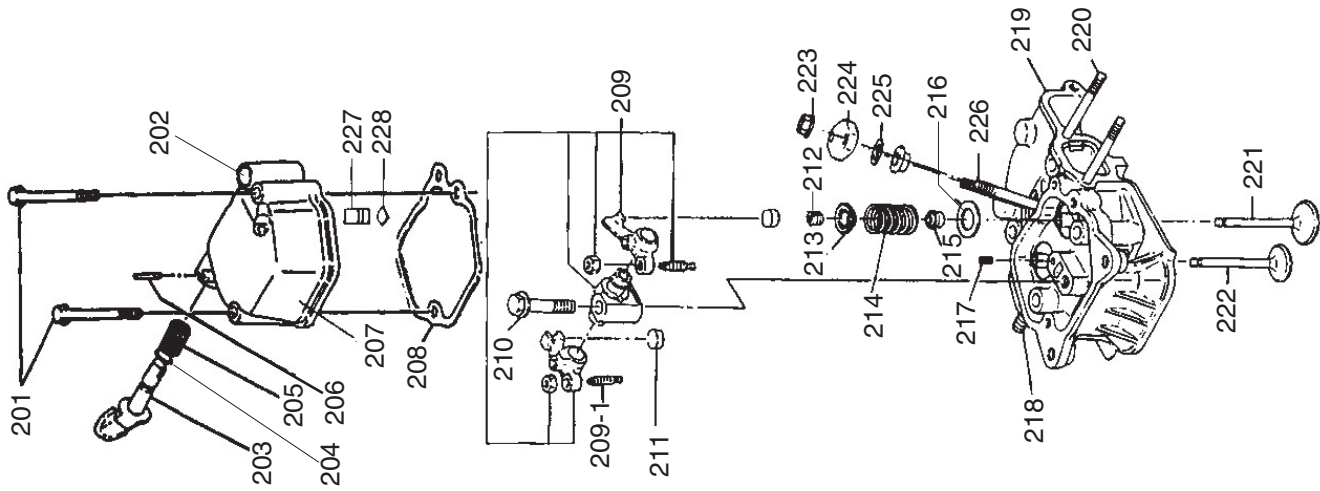


REF	PART #	DESCRIPTION
103	PH81910103	CYLINDER HEAD NUTS (LONG)
104	PH81910104	CYLINDER HEAD NUTS (SHORT)
105	PH81910105	CYLINDER HEAD NUT GASKET
106	PH81910106	CYLINDER HEAD GASKET
107	PH81910107	OVAL RING GASKET 5.1 X 2.6
108	PH81910108	CYLINDER HEAD BOLTS LONG
109	PH81910109	CYLINDER HEAD BOLTS SHORT
110	PH81910110	ENGINE BLOCK
111	PH81910111	REAR OIL SEAL 35 X 50 X 8
112	PH81910112	OIL DRAIN PLUG
113	PH81910113	OIL DRAIN PLUG GASKET
114	PH81910114	O-RING FOR OIL DIPSTICK
115	PH81910115	FUEL PUMP STUD
116	PH81910116	FUEL PUMP LONG STUD
117	PH81910117	FUEL INJECTOR GASKET
118	PH81910118	OIL DIPSTICK
119	PN01M	HEX NUT M6-1

REF	PART #	DESCRIPTION
120	PH81910120	SEALING PLATE GASKET
121	PH81910121	SEALING PLATE
122	PH81910122	THRUST PIECE
123	PH81910123	FLANGE FACE WITH BOLTS
124	PH81910124	NEEDLE BEARING
125	PH81910125	BALL BEARING
126	PH81910126	CRANKCASE COVER GASKET
127	PH81910127	BEARING 207
128	PH81910128	RETAINING PIN 8 X 12
129	PH81910129	FUEL PIPE
130	PH81910130	CRANKCASE COVER
131	PH81910131	INNER HEXAGON PLUG G1/8
132	PH81910132	FLANGE BOLT M8-1.25 X 33.5
133	PH81910133	FRONT OIL SEAL 35 X 50 X 10
135	PH81910135	MAIN BUSHING
138	PH81910138	ALUMINUM PLUG DIAMETER 8 X 8



Engine Cylinder Head Parts Breakdown

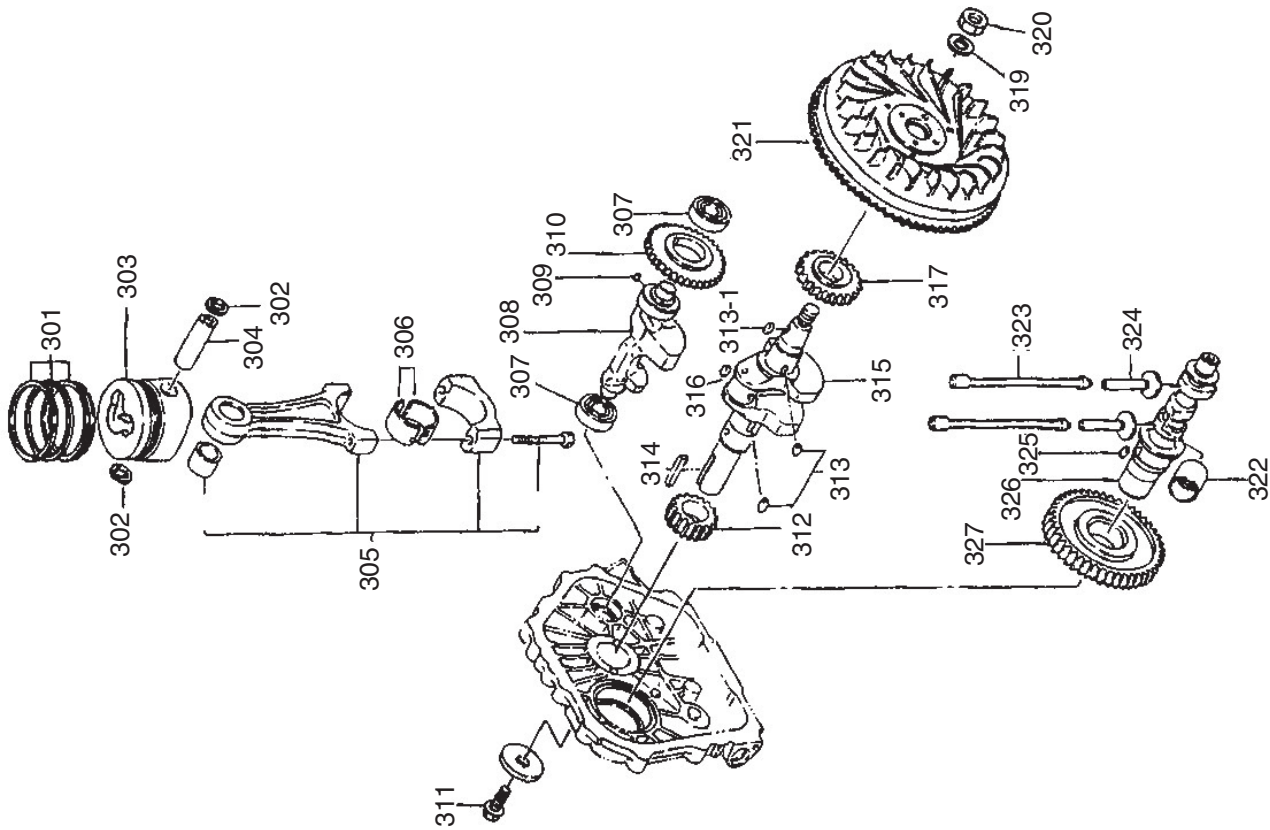


REF	PART #	DESCRIPTION
201	PH81910201	FLANGE BOLT M6-1 X 70
202	PH81910202	OIL HOLE PLUG
203	PH81910203	DECOMPRESSION SHAFT
204	PH81910204	O-RING 10 X 1.9
205	PH81910205	TORSION SPRING
206	PH81910206	RETAINING PIN 3 X 16
207	PH81910207	CYLINDER HEAD COVER
208	PH81910208	CYLINDER HEAD COVER GASKET
209	PH81910209	ROCKER ARM
209-1	PH81910209-1	VALVE ADJUSTING SCREW
210	PH81910210	ROCKER SHAFT FASTENING BOLT
211	PH81910211	ADJUSTING VALVE SPACER
212	PH81910212	VALVE CLIP
213	PH81910213	VALVE SPRING SEAT
214	PH81910214	VALVE SPRING

REF	PART #	DESCRIPTION
215	PH81910215	VALVE GUIDE OIL SEAL
216	PH81910216	VALVE SPRING WASHER
217	PH81910217	PIN 4 X 8
218	PH81910218	DOUBLE ENDED STUD
219	PH81910219	CYLINDER HEAD
220	PH81910220	DOUBLE ENDED BOLT
221	PH81910221	INTAKE VALVE
222	PH81910222	EXHAUST VALVE
223	PN01M	HEX NUT M6-1
224	PH81910224	FUEL INJECTOR PRESSURE PLATE
225	PH81910225	FUEL INJECTOR GASKET
226	PH81910226	FUEL INJECTOR BOLT (LONG)
227	PH81910227	BREATHER ASSEMBLY
228	PH81910228	O-RING 12 X 1.9



Engine Piston and Crank Parts Breakdown

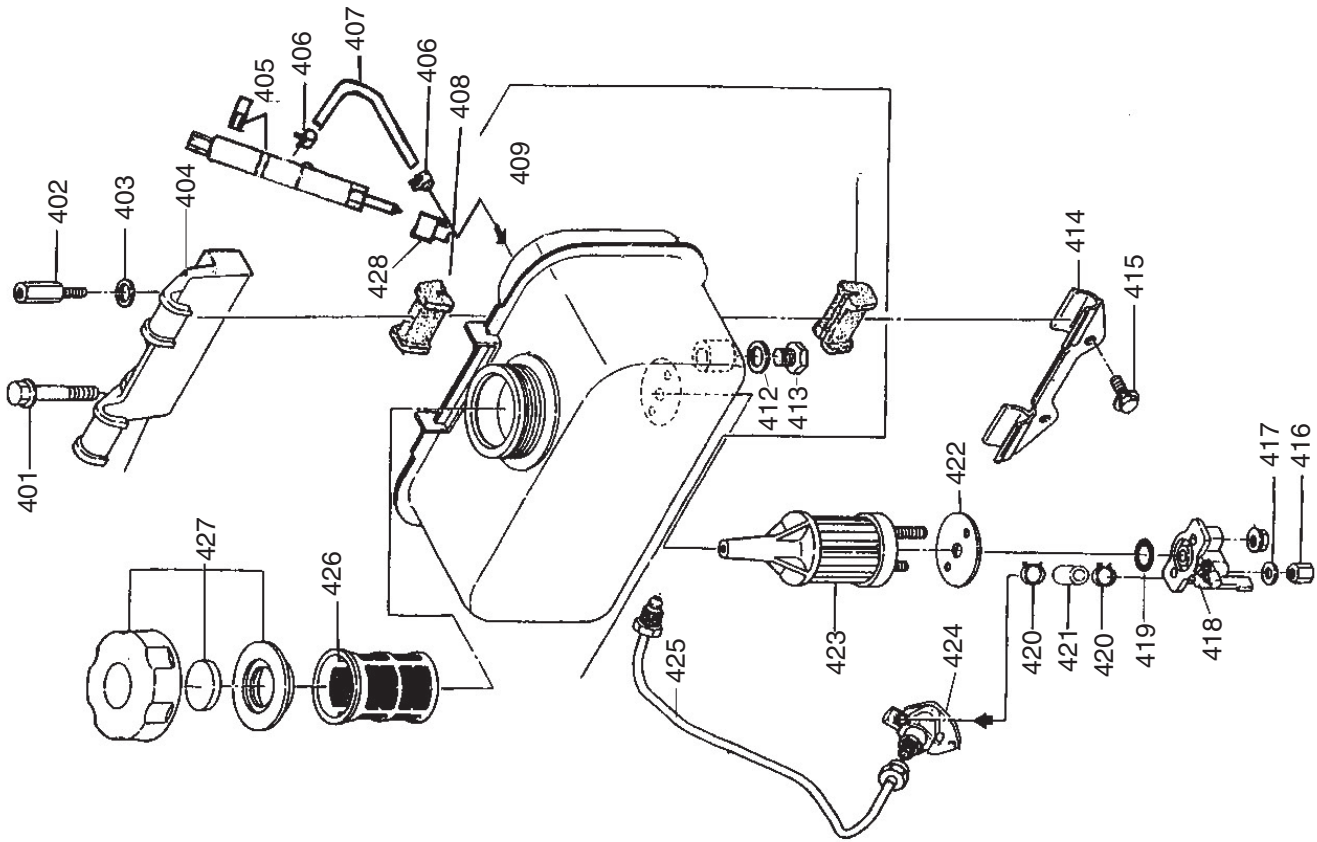


REF	PART #	DESCRIPTION
301	PH81910301	PISTON RINGS
302	PH81910302	PISTON PIN RETAINER CLIP 23MM
303	PH81910303	PISTON
304	PH81910304	WRIST PIN
305	PH81910305	CONNECTING ROD ASSEMBLY
306	PH81910306	CONNECTING ROD BEARING
307	PH81910307	BEARING
308	PH81910308	BALANCING SHAFT
309	PH81910309	KEY 5 X 7
310	PH81910310	BALANCING SHAFT TIMING GEAR
311	PH81910311	FLANGE BOLT
312	PH81910312	CRANKSHAFT TIMING GEAR
313	PH81910313	KEY 5 X 12
313-1	PH81910313-1	KEY 5 X 14

REF	PART #	DESCRIPTION
314	PH81910314	KEY 6 X 63
315	PH81910315	CRANKSHAFT
316	PH81910316	PLUG 6 X 8
317	PH81910317	BALANCING SHAFT DRIVING GEAR
319	PH81910319	FLYWHEEL NUT GASKET
320	PH81910320	FLYWHEEL NUT
321	PH81910321	FLYWHEEL WITH RING GEAR
322	PH81910322	FUEL PUMP ROD SLEEVE
323	PH81910323	PUSH ROD
324	PH81910324	TAPPET
325	PH81910325	KEY 5 X 14
326	PH81910326	CAMSHAFT
327	PH81910327	CAMSHAFT TIMING GEAR



Engine Fuel Tank Parts Breakdown

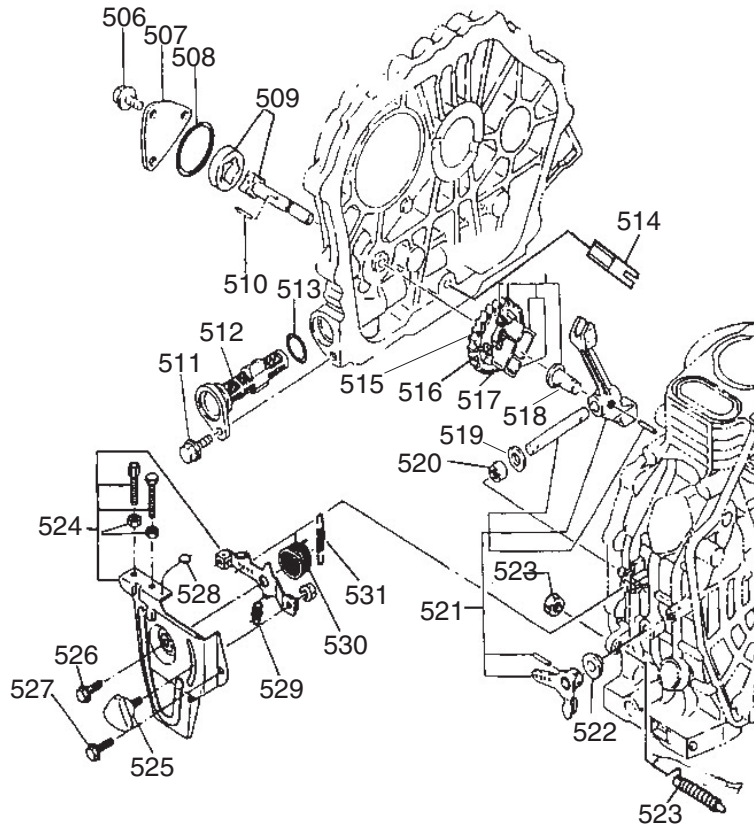


REF	PART #	DESCRIPTION
401	PH81910401	FLANGE BOLT M8-1.25 X 45
402	PH81910402	UPPER BRACKET FASTENER
403	PW01M	FLAT WASHER 8MM
404	PH81910404	UPPER TANK BRACKET
405	PH81910405	INJECTOR
406	PH81910406	HOSE CLAMP
407	PH81910407	FUEL HOSE
408	PH81910408	RUBBER FUEL TANK MOUNT
409	PH81910409	FUEL TANK
412	PH81910412	FUEL DRAIN GASKET
413	PH81910413	FUEL DRAIN PLUG
414	PH81910414	LOWER TANK BRACKET
415	PH81910415	FLANGE BOLT M6-1 X 14

REF	PART #	DESCRIPTION
416	PH81910416	HEX NUT M6-1
417	PW03M	FLAT WASHER 6MM
418	PH81910418	FUEL TANK PETCOCK ASSEMBLY
419	PH81910419	FLAT WASHER
420	PH81910420	FUEL PIPE CLAMP
421	PH81910421	FUEL HOSE
422	PH81910422	FUEL FILTER GASKET
423	PH81910423	FUEL FILTER ASSEMBLY
424	PH81910424	FUEL INJECTION PUMP
425	PH81910425	HIGH PRESSURE FUEL PIPE
426	PH81910426	FUEL CUP FILTER
427	PH81910427	FUEL CAP ASSEMBLY
428	PH81910428	FUEL INJECTOR CAP



Engine Lubrication/Speed Parts Breakdown

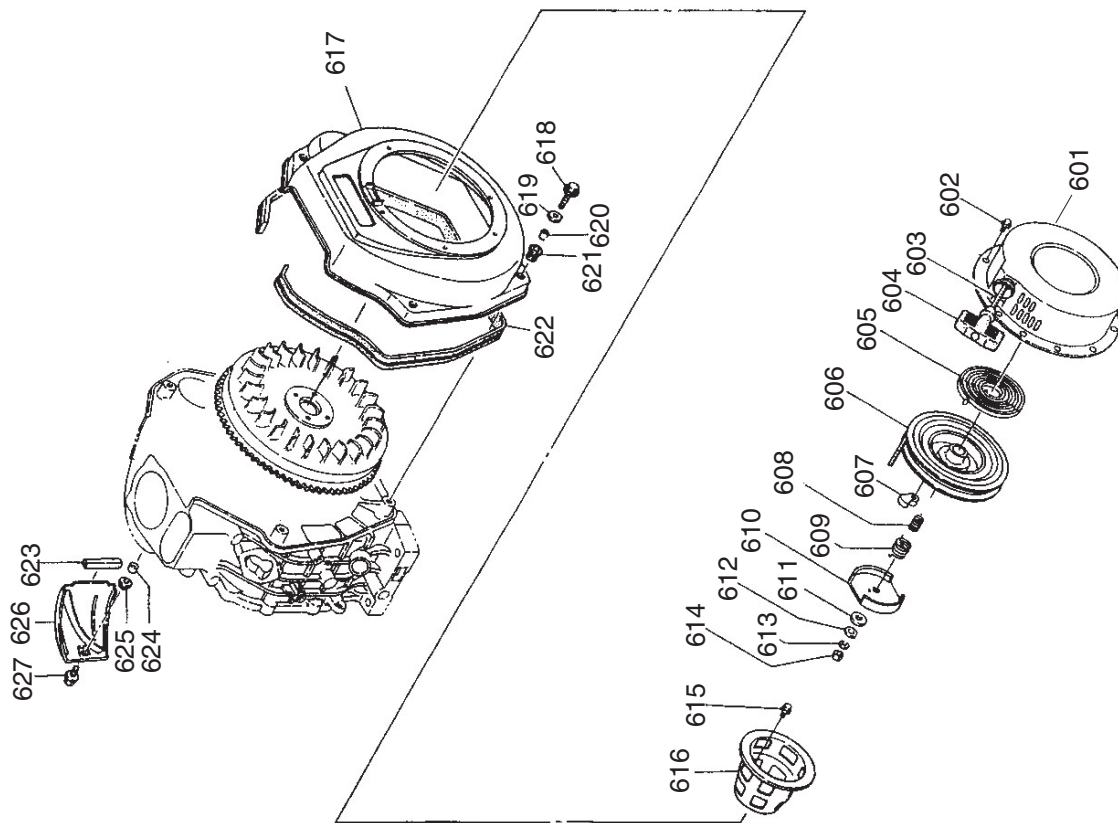


REF	PART #	DESCRIPTION
506	PFB01M	FLANGE BOLT M6-1 X 12
507	PH81910507	OIL PUMP COVER
508	PH81910508	O-RING 34.5 X 1.8
509	PH81910509	OIP PUMP ASSEMBLY
510	PH81910510	PIN 3 X 6
511	PH81910511	FLANGE BOLT M9 X 14
512	PH81910512	OIL FILTER CLEANING ELEMENT
513	PH81910513	SEALING RING 20 X 2.65
514	PH81910514	OIL GUIDE
515	PH81910515	OIL PUMP DRIVING GEAR
516	PH81910516	FLY BLOCK PIN
517	PH81910517	FLY BLOCK
518	PH81910518	GOVERNOR FORK TAPPET

REF	PART #	DESCRIPTION
519	PH81910519	LEVER SHAFT GASKET
520	PH81910520	BEARING
521	PH81910521	FORK LEVER ASSEMBLY
522	PH81910522	WASHER
523	PH81910523	FUEL CONTROLLER PARTS
524	PH81910524	HANDLE BRACKET ASSEMBLY
525	PH81910525	SPEED CONTROL LEVER
526	PH81910526	FLANGE BOLT M6-1 X 14
527	PH81910527	FLANGE BOLT M6-1 X 18
528	PH81910528	LEAD SEAL
529	PH81910529	RETURN SPRING 2
530	PH81910530	RETURN SPRING 1
531	PH81910531	SPEED CONTROL SPRING



Engine Recoil Starter Parts Breakdown

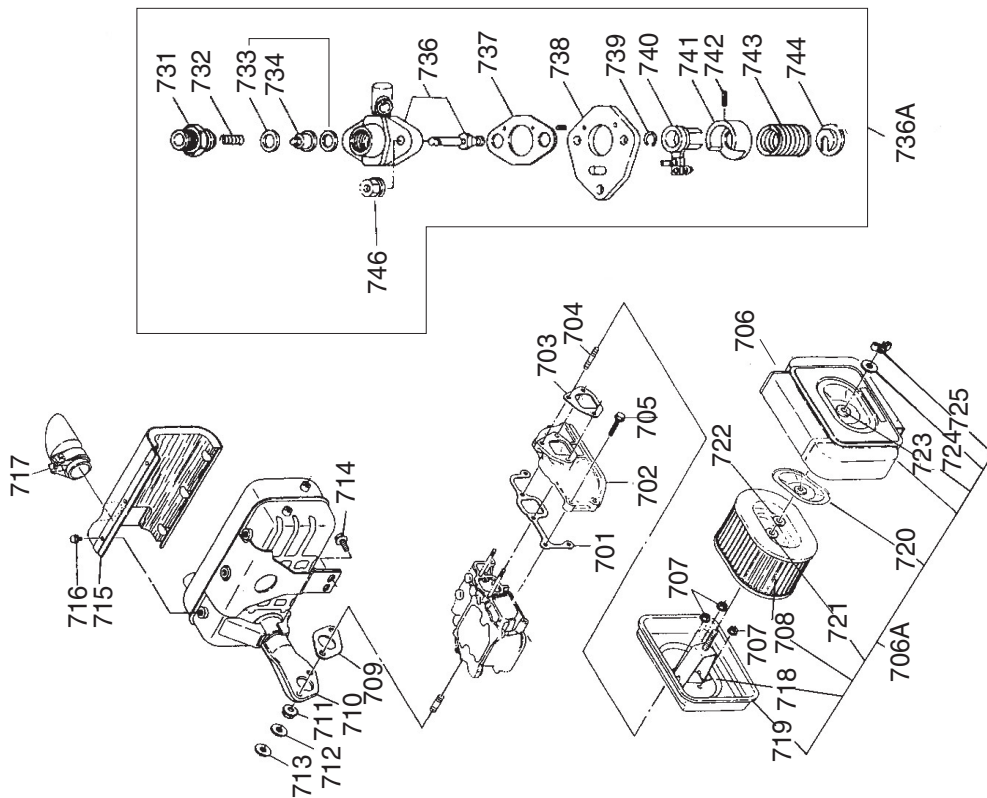


REF	PART #	DESCRIPTION
601	PH81910601	RECOIL CASE ASSEMBLY
602	PH81910602	FLANGE BOLT M6-1 X 8
603	PH81910603	RECOIL STARTER ROPE
604	PH81910604	RECOIL STARTER HANDLE
605	PH81910605	FLAT TORSIONAL SPRING
606	PH81910606	RECOIL REEL
607	PH81910607	STARTING CLAW
608	PH81910608	HELICAL SPRING
609	PH81910609	TORSIONAL SPRING
610	PH81910610	STARTING CLAW PLATE
611	PH81910611	FRICTION PLATE
612	PH81910612	FRICTION PLATE GASKET
613	PH81910613	SPRING WASHER
614	PN01M	HEX NUT M6-1

REF	PART #	DESCRIPTION
615	PFB01M	FLANGE BOLT M6-1 X 12
616	PH81910616	STARTER
617	PH81910617	RECOIL STARTER COVER
618	PH81910618	FLANGE BOLT M6-1 X 22
619	PW03M	FLAT WASHER 6MM
620	PH81910620	COLLAR
621	PH81910621	SHOCK ABSORBER
622	PH81910622	SHOCK PADS
623	PH81910623	SHOCK ISOLATOR
624	PH81910624	COLLAR
625	PH81910625	PAD
626	PH81910626	WIND LEADING PLATE
627	PH81910627	FLANGE BOLT M6-1 X 22



Engine Air Filter, Muffler, and Fuel Pump Parts Breakdown

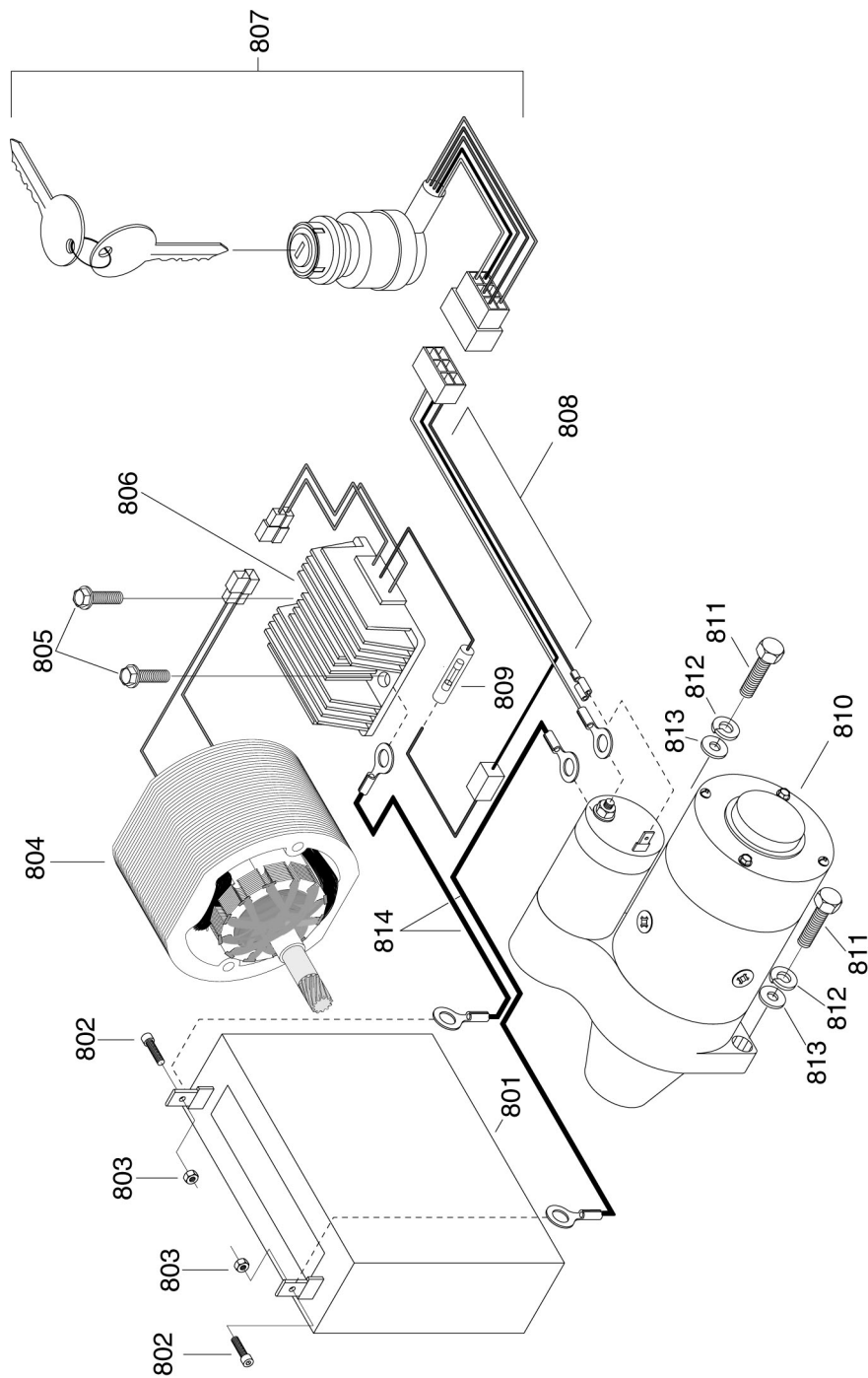


REF	PART #	DESCRIPTION
701	PH81910701	INTAKE PIPE GASKET
702	PH81910702	INTAKE PIPE
703	PH81910703	AIR CLEANER GASKET
704	PH81910704	EXHAUST MANIFOLD STUD
705	PH81910705	FLANGE BOLT M6-1 X 22
706A	PH81910706A	AIR FILTER TOP ASSEMBLY
706	PH81910706	AIR FILTER ASSEMBLY
707	PH81910707	HEX NUT M6-1
708	PH81910708	AIR FILTER ELEMENT
709	PH81910709	MUFFLER GASKET
710	PH81910710	MUFFLER ASSEMBLY
711	PW01M	FLAT WASHER 8MM
712	PLW04M	LOCK WASHER 8MM
713	PH81910713	HEX NUT M6-1
714	PH81910714	FLANGE BOLT M8-1.25 X 14
715	PH81910715	MUFFLER SCREAM COVER
716	PH81910716	FLANGE BOLT M6-1 X 14
717	PH81910717	MUFFLER TAIL PIPE
718	PH81910718	INNER SHOCK SEALING RING
719	PH81910719	AIR FILTER BOTTOM ASSEMBLY
720	PH81910720	OUTER SHOCK SEALING RING

REF	PART #	DESCRIPTION
721	PH81910721	AIR FILTER SHOCK ABSORBER
722	PH81910722	COLLAR
723	PH81910723	AIR FILTER SHOCK ABSORBER
724	PH81910724	COLLAR
725	PWN02M	WING NUT M8-1.25
731	PH81910731	DELIVERY HOLDER
732	PH81910732	DELIVERY SPRING
733	PH81910733	DELIVERY GASKET
734	PH81910734	DELIVERY VALVE
736A	PH81910736A	FUEL PUMP ASSEMBLY
736	PH81910736	PLUNGER ASSEMBLY
737	PH81910737	ADJUSTING GASKET
738	PH81910738	PUMP BODY CONNECTING PLATE
739	PH81910739	CIRCLIP
740	PH81910740	CONTROL LEVER ASSEMBLY
741	PH81910741	SPRING SEAT
742	PH81910742	SLEEVE PIN
743	PH81910743	FUEL INJECTION PUMP
744	PH81910744	FUEL INJECTION PUMP SPRING
746	PN01M	HEX NUT M6-1



Engine Electric Start Parts Breakdown

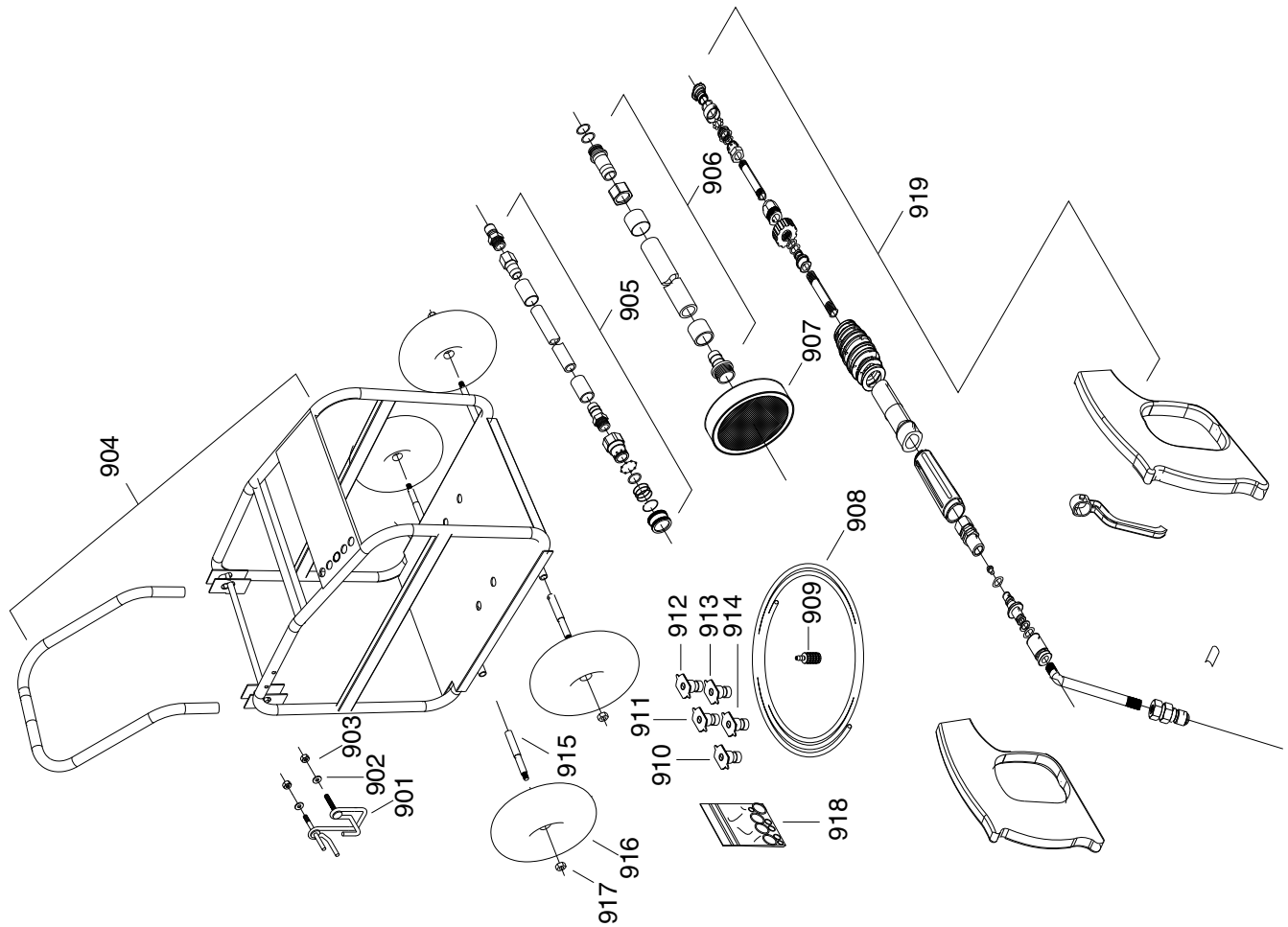


REF	PART #	DESCRIPTION
801	PH81910801	BATTERY
802	PH81910802	CAP SCREW M5-0.8 X 13
803	PN06M	HEX NUT M5-.8
804	PH81910804	ALTERNATOR ASSEMBLY
805	PFB01M	FLANGE BOLT M6-1 X 12
806	PH81910806	VOLTAGE REGULATOR
807	PH81910807	KEY AND SWITCH ASSEMBLY

REF	PART #	DESCRIPTION
808	PH81910808	WIRING HARNESS
809	PH81910809	FUSE
810	PH81910810	STARTER MOTOR
811	PB14M	HEX BOLT M10-1.5 X 35
812	PLW06M	LOCK WASHER 10MM
813	PW04M	FLAT WASHER 10MM
814	PH81910814	BATTERY CABLE



Frame and Hardware Parts Breakdown

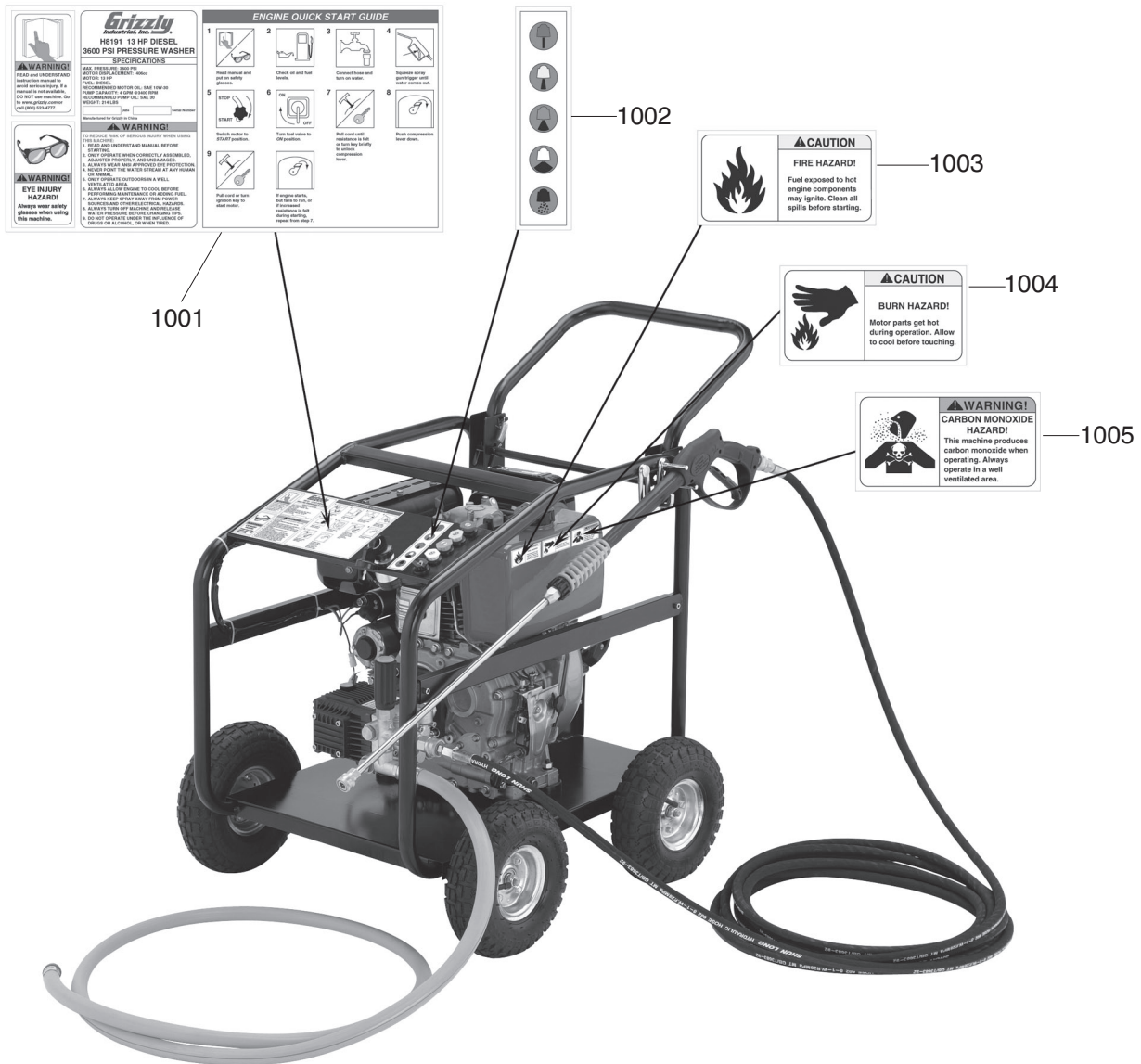


REF	PART #	DESCRIPTION
901	PH81910901	SPRAY GUN BRACKET
902	PW01M	FLAT WASHER 8MM
903	PN03M	HEX NUT M8-1.25
904	PH81910904	FRAME ASSEMBLY
905	PH81910905	HIGH PRESSURE HOSE ASSEMBLY
906	PH81910906	IN-FEED HOSE ASSEMBLY
907	PH81910907	IN-FEED FILTER
908	PH81910908	CHEMICAL HOSE
909	PH81910909	CHEMICAL FILTER
910	PH81910910	0 DEGREE NOZZLE

REF	PART #	DESCRIPTION
911	PH81910911	15 DEGREE NOZZLE
912	PH81910912	25 DEGREE NOZZLE
913	PH81910913	40 DEGREE NOZZLE
914	PH81910914	CHEMICAL NOZZLE
915	PH81910915	AXLE
916	PH81910916	WHEEL ASSEMBLY
917	PLN09M	LOCK NUT M12-1.75
918	PH81910918	O-RING KIT
919	PH81910919	SPRAY GUN AND WAND ASSEMBLY



Machine Labels Breakdown



REF	PART #	DESCRIPTION
1001	PH81911001	MACHINE ID LABEL
1002	PH81911002	NOZZLE COLOR CHART LABEL
1003	PH81911003	FLAMABLE WARNING LABEL

REF	PART #	DESCRIPTION
1004	PH81911004	HOT SURFACES WARNING LABEL
1005	PH81911005	CARBON MONOXIDE WARNING LABEL

WARNING

Safety labels warn about machine hazards and ways to prevent injury. The owner of this machine **MUST** maintain the original location and readability of the labels on the machine. If any label is removed or becomes unreadable, **REPLACE** that label before using the machine again. Contact Grizzly at (800) 523-4777 or www.grizzly.com to order new labels.

